

10762

ORIGINAL

10762

Form 504	
U. S. DEPARTMENT OF COMMERCE	
COAST AND GEODETIC SURVEY	
DESCRIPTIVE REPORT	
Type of Survey	Planimetric
Field No.	Office No. T-10762
LOCALITY	
State	Alabama
General locality	Mobile County
Locality	Dauphin Island Bay
1957 - 1960 *	
CHIEF OF PARTY	
R. F. Lanier, Chief of Field Party	
W. R. Kachel, Tampa District Office	
LIBRARY & ARCHIVES	
DATE	

\* REFER TO PAGE 6 OF THIS REPORT. USCOMM-DC 5087

## DESCRIPTIVE REPORT - DATA RECORD

T - 10762

PROJECT NO. (II):  PH-5704		
FIELD OFFICE (II):  Pascagoula, Mississippi		CHIEF OF PARTY  Roger F. Lanier
PHOTOGRAMMETRIC OFFICE (III):  Tampa, Florida		OFFICER-IN-CHARGE  Arthur L. Wardwell
INSTRUCTIONS DATED (II) (III):  II 23 June 1958 10 Feb. 1959 (Supplement 1) 17 Aug. 1959 (Supplement 2)  III 7 April 1959 17 Aug. 1959 (Supplement 1) & 6 Oct. 1959		
METHOD OF COMPILATION (III):  Graphic		
MANUSCRIPT SCALE (III):  1:10,000		STEREOSCOPIC PLOTTING INSTRUMENT SCALE (III):  Inapplicable
DATE RECEIVED IN WASHINGTON OFFICE (IV):  Nov. 3, 1960 FINAL APRIL 30, 1968		DATE REPORTED TO NAUTICAL CHART BRANCH (IV):
APPLIED TO CHART NO.	DATE:	DATE REGISTERED (IV):
GEOGRAPHIC DATUM (III):  N. A. 1927		VERTICAL DATUM (III): MHW <del>MEAN SEA LEVEL</del> EXCEPT AS FOLLOWS: Elevations shown as (25) refer to mean high water Elevations shown as (5) refer to sounding datum i.e., mean low water or mean lower low water
REFERENCE STATION (III):  DAUPHIN ISLAND WATER TANK 1958		
LAT.:  30° 15' 11.971"	LONG.:  88° 06' 44.880"	<input checked="" type="checkbox"/> ADJUSTED <input type="checkbox"/> UNADJUSTED
PLANE COORDINATES (IV):  = X =		STATE  Alabama
		ZONE  West
ROMAN NUMERALS INDICATE WHETHER THE ITEM IS TO BE ENTERED BY (II) FIELD PARTY, (III) PHOTOGRAMMETRIC OFFICE, OR (IV) WASHINGTON OFFICE. WHEN ENTERING NAMES OF PERSONNEL ON THIS RECORD GIVE THE SURNAME AND INITIALS, NOT INITIALS ONLY.		



## DESCRIPTIVE REPORT - DATA RECORD

FIELD INSPECTION BY (II):		DATE:
M. A. Stewart, W. M. Reynolds		Aug. 1958
MEAN HIGH WATER LOCATION (III) (STATE DATE AND METHOD OF LOCATION):		
Air Photo Compilation - Date of Photography 19 Nov. 1957 MHW LINE FIELD INSPECTED AND FIELD EDITED (DATES INCLUDED ON THIS PAGE).		
PROJECTION AND GRIDS RULED BY (IV):		DATE
P. Dempsey		Oct. 1958
PROJECTION AND GRIDS CHECKED BY (IV):		DATE
R. D. Shoup		Mar. 1959
CONTROL PLOTTED BY (III):		DATE
R. R. Wagner		Apr. 1959
CONTROL CHECKED BY (III):		DATE
R. J. Pate		Apr. 1959
RADIAL PLOT OR STEREOSCOPIC CONTROL EXTENSION BY (III):		DATE
R. R. Wagner		Sept. 1959
STEREOSCOPIC INSTRUMENT COMPILATION (III):	PLANIMETRY	DATE
	CONTOURS	DATE
Inapplicable		
MANUSCRIPT DELINEATED BY (III):		DATE
R. Dossett		Sept. 1959
SCRIBING BY (III):		DATE
V. P. Cackowski		Oct. 1960
PHOTOGRAMMETRIC OFFICE REVIEW BY (III):		DATE
W. H. Shearouse		Oct. 1959
REMARKS: FIELD EDIT : MARCH 1960		

## DESCRIPTIVE REPORT - DATA RECORD

CAMERA (KIND OR SOURCE) (III):

9-lens and Single lens "L"

## PHOTOGRAPHS (III)

NUMBER	DATE	TIME	SCALE	STAGE OF TIDE
56749	19 Nov. 1957	14:09	1:10,000	0.6 ft. above MLW
56750	"	14:10	"	"
57L2501 & 2502	"	"	"	"
57L2760 thru 2763	"	15:34	"	0.8 "

## TIDE (III)

Dirunal

	RATIO OF RANGES	MEAN RANGE	<del>5.4/1.4</del> RANGE
REFERENCE STATION: Mobile, Mobile River			1.5
SUBORDINATE STATION: Mobile Point (Fort Morgan)			1.2
SUBORDINATE STATION:			

WASHINGTON OFFICE REVIEW BY (IV):

Leo F. Buegnet, Atlantic Marine Center

DATE:

January 1968

PROOF EDIT BY (IV):

DATE:

NUMBER OF TRIANGULATION STATIONS SEARCHED FOR (II):

5

RECOVERED:

1

IDENTIFIED:

6\*

NUMBER OF BM(S) SEARCHED FOR (II):

None

RECOVERED:

0

IDENTIFIED:

0

NUMBER OF RECOVERABLE PHOTO STATIONS ESTABLISHED (III):

None

NUMBER OF TEMPORARY PHOTO HYDRO STATIONS ESTABLISHED (III):

None

REMARKS:

\*

Five third-order triangulation intersection stations established.



T-10762

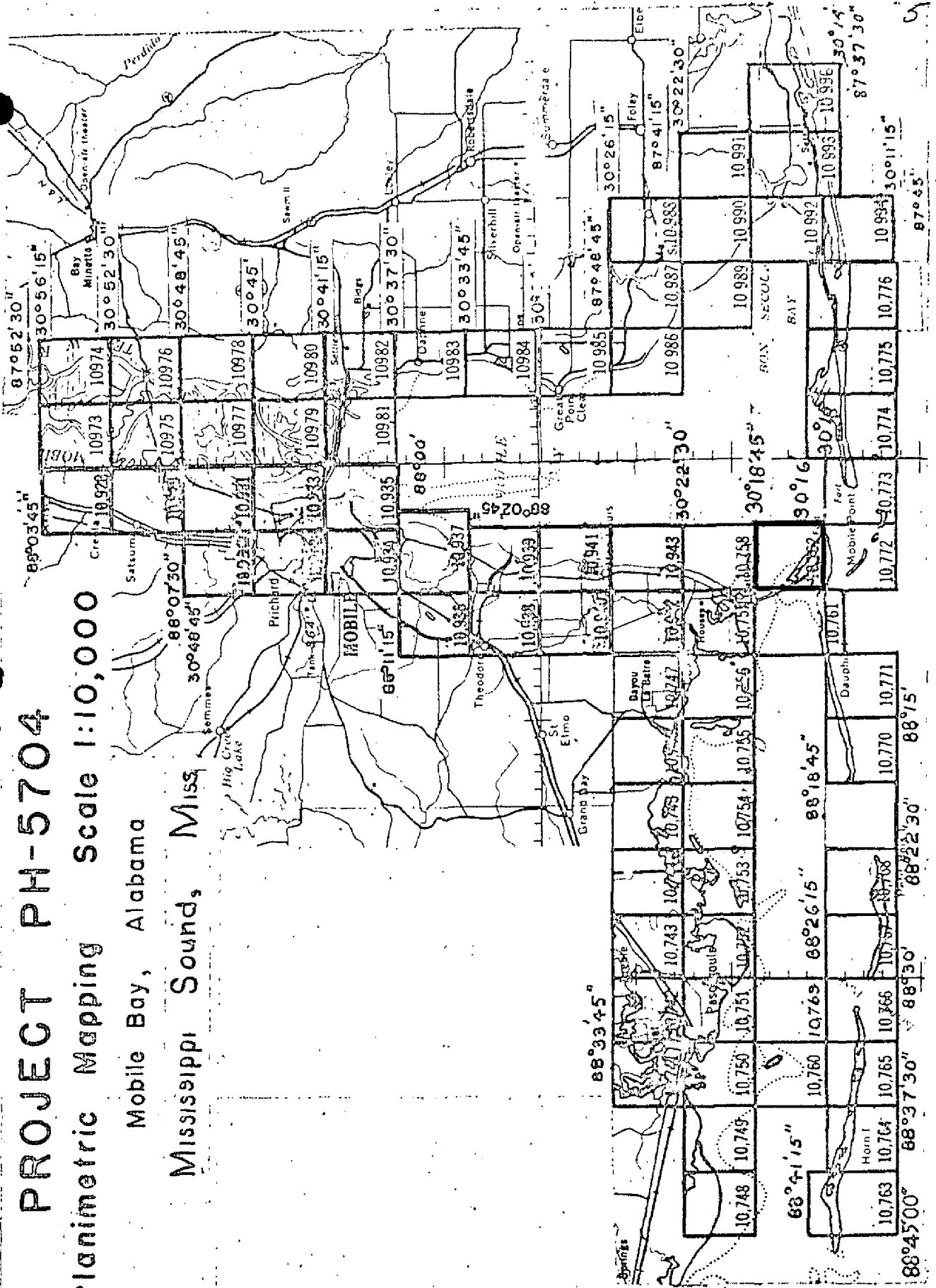
COMPILATION RECORD	COMPLETION DATE	REMARKS
Compiled	September 1959	
Field Edit	March 1960	
Final Review	January 1968	

# PROJECT PH-5704

Planimetric Mapping Scale 1:10,000

Mobile Bay, Alabama

Mississippi Sound, Miss





SUMMARY TO ACCOMPANY  
DESCRIPTIVE REPORT T-10762

Planimetric survey T-10762 is one of seventy-four similar surveys in project PH-5704. It covers a part of the shoreline of Mobile Bay along Little Dauphin and Dauphin Islands, Dauphin Island Bay and Bayou Aloe.

Field work preceding compilation consisted of recovery and/or establishment and identification of horizontal control, shoreline inspection, investigation of Geographic Names and Report on Boundaries.

Compilation was at 1:10,000 scale by graphic methods using the 1:10,000 scale 9-lens photograph of November 1957. Specially prepared photographs along with cronaflex copies of the manuscript and ozalid copies were furnished for preparation of the hydrographers boat sheet, location of photo-hydro signals and for field edit purposes.

The manuscript is a vinylite sheet  $3 \frac{3}{4}$  minutes in latitude by  $3 \frac{3}{4}$  minutes in longitude, which was scribed and reproduced on cronaflex. One cronar positive and one cronar negative are provided for record and registry.

X THIS MAP WAS REVISED IN 1962 (SEE PAGES 22 AND 23 OF THIS REPORT).

7

FIELD INSPECTION REPORT  
Map Numbers T-10761, 10762 and  
T-10770 through T-10772  
Project Ph-5704

2. Areal Field Inspection

These maps are located in southwestern Alabama. The land area is made up of Dauphin Island, Little Dauphin Island and the causeway connecting Dauphin Island to the mainland. The islands are low, sand dune covered beaches, except for the eastern part of Dauphin Island, which is covered with trees. The islands were inaccessible by automobile until 1955, when a causeway and bridge were completed. Extensive development is underway and numerous cottages, roads and bulkheads have been constructed. The area is primarily a summer resort and there are few permanent residents.

Fort Gaines, a fort used during the Civil War, is located in sheet T-10772. A radar station, which upon completion will be a part of the national network, is located along the northern limits of the same sheet.

Field inspection is believed complete as of 1 Sept. 1958. No items were deliberately left for field edit. However, with the development being incomplete, changes will probably be made throughout the above maps.

Photography was of fairly recent date and of good quality. No difficulty was encountered in their interpretation in the field. The tones range from white, in the sand areas, to grey, in the areas covered by light growth of grass, to black, in the areas covered with marsh and trees. Considerable time was spent in the field indicating the inshore limits of marsh. After driving part of the area with a jeep and walking the remainder, the marsh limits were generalized. The photographic tones between definite marsh and the wet sandy areas covered with thick growths of grass were not definite on the photographs or the ground.

The following nine-lens photographs were used for field inspection 56741 through 750, 56863 through 865. The following single lens photographs were used, 57 L 2485 through 2498 and 57 L 2501.

3. Horizontal Control

All Coast and Geodetic Survey control was searched for



and where recovered was identified to control the plot.

The following stations were established by triangulation or traverse methods:

T-10761

CEDAR 3, 1958

Mississippi Sound, Bayou Aloe Entrance Lt. 2, 1958  
Intracoastal Waterway, Miss. Sound, Pass Aux Herons Range D Rear Light, 1958  
Intracoastal Waterway, Miss. Sound, Pass Aux Herons Range D Front Light, 1958

Pond, 1958 (by traverse)

T-10762

Dauphin Island Water Tank, 1958  
Mobile Bay, Pass Aux Herons, Leading Light B, 1958  
Mobile Bay, Pass Aux Herons, Light 2, 1958  
Mobile Bay, Pass Aux Herons, Light 18, 1958  
Mobile Bay, Pass Aux Herons, Range A Front Light, 1958  
Mobile Bay, Pass Aux Herons, Range A Rear Light, 1958

T-10770

Sand, 1958 (by traverse)

Intracoastal Waterway, Miss. Sound, Pass Aux Herons Light 82, 1958

T-10771

Land 1958

Isle 1958 (by traverse)

Intracoastal Waterway, Miss. Sound, Pass Aux Herons Range C Front Light, 1958  
Intracoastal Waterway, Miss. Sound, Pass Aux Herons Range C Rear Light, 1958

T-10772

FORT GAINES (U.S.E.) 1958

No datum adjustments were made by the field party.

The following stations were reported lost;

T-10761

GILL, 1935  
CEDAR 2, 1935  
205-5 (Ala. Geod. Sur.), 1935  
GULL, 1910  
GRANT HOUSE SOUTH GABLE, 1910  
GRANT (FLAG), 1910

T-10762

LITTLE DAUPHIN (U.S.E.), 1908  
PINE, 1910  
DRURY, 1910  
DRURY 2, 1935

T-10770

WEST, 1910  
HALF, 1935

T-10771

TAM, 1935

4. Vertical Control Inapplicable.
5. Contours and Drainage Contours are inapplicable.

Drainage is run-off into Mississippi Sound and The Gulf of Mexico.

6. Woodland Cover

Adequately covered by notes on the photographs.

7. Shoreline and Alongshore Features

The mean high water line and apparent shoreline were inspected by jeep, skiff, and walking along the beach. Appropriate notes and symbols have been indicated on the photographs. (Shoreline inspection data has been indicated on the following nine-lens photographs, 56741 through 56750 and 56863 through 56865).

There is little horizontal difference between the mean high and low water lines on Dauphin Island. The difference between the two lines could not be mapped at the project scale. The approximate low water line, around some small islands, has been indicated on photograph 56864.

There are no bluffs or cliffs.

All docks, piers, wharves and landings have been indicated on the photographs.

Shore ends of submarine cables have been indicated on the photographs. The cable from Cedar Point to Dauphin Island is no longer used but the cable is still in place. The cable now in use, creases on poles west of the bridge, to the draw span, thence on the bridge towers across the channel.

The cable from Dauphin Island to Fort Morgan Coast Guard Station is still in use.

There are no other shoreline structures.

8. Offshore Features

The only offshore features are aids to navigation.

9. Landmarks and Aids

All landmarks for nautical charts have been indicated on the photographs. Form 567 will be submitted at a later date.



The only significant interior landmark is Fort Gaines in map T-10772.

There are no aeronautical aids in the area.

Fixed aids to navigation were located by one of the following methods:

1. Triangulation.
2. Theodolite cuts from identifiable photograph points.
3. Sextant fixes with check angles.

The daybeacons along a channel in Dauphin Island Bay, map T-10762, are privately maintained by Dauphin Island Marina Inc. These aids were numbered for the convenience of the observer only. Form 567 will be submitted at a later date.

#### 10. Boundaries, monuments and Lines

See Special Report Boundaries Project Ph-5704, which will be submitted at a later date.

#### 11. Other Control

The following recoverable topographic stations were established: Pond, 1958 (T-10761), Sand, 1958 (T-10770) and Isle, 1958 (T-10771). These stations were located by traverse from monumented triangulation stations. They were classified as recoverable topographic stations since a standardized tape was not used in the taping.

#### 12. Other Interior Features

All roads and buildings were field inspected and have been indicated on the photographs.

Measurements for the bridge, along the causeway, to Dauphin Island were not required by the project instructions.

There are no airports or landing fields.

#### 13. Geographic Names

See Special Report Geographic Names, Project Ph-5704, which will be submitted at a later date.

14. Special Reports and Supplemental Data

1. Special Report Boundaries, Project Ph-5704.
2. Special Report Geographic Names, Project Ph-5704.
3. Sketch Third-Order Triangulation, Project Ph-5704,  
Bon Secour Bay to Dog Keys Pass.
4. Form 567, Project Ph-5704.

Submitted:

*William M. Reynolds*  
William M. Reynolds

Approved:

*Roger F. Lanier*  
Roger F. Lanier  
LT, C&GS  
Chief of Party







PHOTOGRAMMETRIC PLOT REPORT21. AREA COVERED

Photogrammetric Plot No. 1 of Ph-5704 was for the entrance to Mobile Bay and all of Dauphin Island (manuscripts T-10757, T-10758, T-10761, T-10762, T-10770 through T-10772), and also eastward along a narrow peninsula between Bon Secour Bay and the Gulf of Mexico (manuscripts T-10773 through T-10776).

The sketch on page 14\* of this report shows the arrangement of manuscripts, the identified control, index of control, photograph centers and the adjoining manuscripts.

22. METHODRadial Plot:

Map manuscripts: -- The projections are 3'45" in latitude and longitude with the exceptions of T-10774 through T-10776 which are 4'45" in latitude. The western limit of T-10770 was extended to 88°19'. See letter (copy attached) to Chief, Photogrammetry Division, dated 17 September 1959. The northern limit of T-10771 was extended to 30°15'30" to accommodate detail in this area.

The plot was run on the joined manuscripts.

Photographs: -- The nine-lens photographs of 19 November 1957 at a scale of 1:10,000 were used to run the plot.

Contact single-lens infra red photographs were taken simultaneously with the nine-lens photographs with Camera "L" being used.

Only those single-lens photographs were located where it was believed they would aid the compiler in locating the photo-hydro stations. They were fixed in position by holding pass points located by the nine-lens photographs.

Templets: -- Vinylite templets were made from nine-lens photographs using master templet 53605 (1956-1957) for correction of transforming errors and paper distortion.

Closure and adjustment to control: -- The plot was run from east to west with conventional methods being used. Two Alabama Geodetic Survey control stations could not be held in the plot. See letter (copy attached) to Chief, Photogrammetry Division, dated 8 September 1959.

\* DESCRIPTIVE REPORT FOR T-10757



23. ADEQUACY OF CONTROL

The control was adequate and all of it was positively identified. In the northern part of T-10758, it could not be determined which of two stations was in error, and MON LOUIS RM 2 1930 and JULIET R.M.A. 1910 were returned to the field for verification. It was found that JULIET R.M."A" actually had been destroyed at the time of the original identification and should not have been identified. (See 1959 recovery). A new substitute station was located for MON LOUIS and was held in the plot.

24. SUPPLEMENTAL DATA

None.

25. PHOTOGRAPHY

The nine-lens photographs gave adequate coverage, however the quality of the photographs was poor. Most of the photographs have a muddy appearance and on 56758 three fiducial marks were missing in the wing chambers. See attached letter dated 1 September 1959, Subject "Washboard Affect of nine-lens photographs".

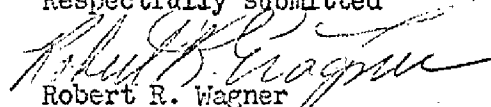
None of the photographs were sufficiently tilted to justify special measures.

26. GENERAL


Dates of completion of the photogrammetric plot by maps are as follows:

T-10757	8 September 1959	T-10772	28 August 1959
T-10758	8 September 1959	T-10773	14 August 1959
T-10761	3 September 1959	T-10774	14 August 1959
T-10762	4 September 1959	T-10775	13 August 1959
T-10770	21 September 1959	T-10776	13 August 1959
T-10771	21 September 1959		

Respectfully submitted

  
Robert R. Wagner  
Cartographer(Photo)

APPROVED & FORWARDED

  
for Arthur L. Wardwell  
Tampa District Officer



COMPILATION REPORT

T-10762

PHOTOGRAMMETRIC PLOT REPORT

Submitted with T-10757

31. DELINEATION

Compiled by graphic method.

The nine-lens photographs were of good scale but were not clear.

The single-lens photographs were used for interpretation of shoreline and vegetation where not clear on the 9-lens.

The field inspection was adequate.

32. CONTROL

See Photogrammetric Plot Report.

33. SUPPLEMENTAL DATA

None.

34. CONTOURS AND DRAINAGE

Contours are inapplicable. Drainage was obvious.

35. SHORELINE AND ALONGSHORE DETAILS

Delineated according to field inspection notes which were adequate. Reference Item 7 of Field inspection report.

36. OFFSHORE DETAILS

Shown as indicated by field inspection.

37. LANDMARKS AND AIDS

One (1) landmark and seven (7) aids to navigation are listed on Form 567 and ~~made a part of this report.~~ <sup>which was submitted 15 July 1960.</sup> A discrepancy exists in the azimuth of Range "A" Pas Aux Herons in the 1959 Light List (288°30') Chart 873, revised to 3/23/59 (286°2.5m) and as computed for this map (286°32').

38. CONTROL FOR FUTURE SURVEYS

None.

39. JUNCTIONS

A satisfactory junction has been secured with T-10758 on the north, T-10772 on the south and T-10761 on the west. There is no contemporary survey on the east.

46. COMPARISON WITH EXISTING MAPS

A comparison has been made with Planimetric Maps T-5536 and T-5537, scale 1:10,000 compiled from aerial photographs taken June 23, 1934. There has been extensive development of the shoreline and interior construction since compilation of the 1934 manuscripts. Dauphin Island Bay now has only one opening into Mobile Bay, through Pass Drury. A causeway to Cedar Pt. (on T-10761) has been constructed and considerable filling and new shoreline construction is now in progress along the shore of Bayou Aloe and Dauphin Island Bay.

A comparison was also made with Army Map Service Topographic Quadrangle CEDAR POINT, ALA., edition 1-AMS, copied from U. S. Geological plane-table survey of 1940-1941. The same discrepancies noted above are applicable. *USGS quadrangle LITTLE DAUPHIN ISLAND 1:24,000 edition of 1958 was received and the comparison is good.*

47. COMPARISON WITH NAUTICAL CHARTS

A comparison has been made with Nautical Chart 873, 2nd edition, scale 1:40,000, revised to 3/23/59. Except for new shoreline development in Dauphin Bay and at North Point on Little Dauphin Island, no outstanding discrepancies were noted.

ITEMS TO BE APPLIED TO NAUTICAL CHARTS IMMEDIATELY

None.

ITEMS TO BE CARRIED FORWARD

None.



R. Dossett  
Carto Survey Aid

APPROVED AND FORWARDED:

*William B. Kachel, LCDR., USN*  
*for* Arthur L. Wardwell  
Chief of Party



48. GEOGRAPHIC NAME LIST

Nautical Chart 873 and Geological Survey quadrangle LITTLE DAUPHIN ISLAND were used for name sources..

ALABAMA

BAYOU ALOE

~~BAYOU MATAQUA~~

*is SPRING BAYOU } See Field Edit Report for this*

~~BIG PASS MARGARET~~

*is WOODS BAYOU*

*} map submitted with T-10772*

BROOKLEY AIR FORCE BASE AIR-SEA RESCUE STATION

CHUGAE POINT

CONFEDERATE PASS

*Dauphin Island (town)-pp.*

DAUPHIN ISLAND

DAUPHIN ISLAND BAY

DAUPHIN ISLAND BRIDGE (TOLL)

HUDSON BAY

INDIAN BAY

LITTLE DAUPHIN ISLAND

MOBILE BAY

NORTH POINT

PASS DRURY

PASS AUX HERONS

ST AGNES CHURCH

STATE 163

*Spring Bayou-pp.*

*Woods Bayou-pp.*

*Names approved  
June 25, 1968. Wright  
- Frank W. Fickett*



PHOTOGRAMMETRIC OFFICE REVIEW

50

T. 10762

1. Projection and grids WHS 2. Title WHS 3. Manuscript numbers WHS 4. Manuscript size WHS

Unclassified

CONTROL STATIONS

5. Horizontal control stations of third-order or higher accuracy WHS 6. Recoverable horizontal stations of less than third-order accuracy (topographic stations) XX 7. Photo hydro stations XX 8. Bench marks XX  
9. Plotting of sextant fixes XX 10. Photogrammetric plot report MMS 11. Detail points WHS

ALONGSHORE AREAS

(Nautical Chart Data)

12. Shoreline WHS 13. Low-water line WHS 14. Rocks, shoals, etc. WHS 15. Bridges XX 16. Aids to navigation WHS 17. Landmarks WHS 18. Other alongshore physical features WHS 19. Other along-shore cultural features WHS

PHYSICAL FEATURES

20. Water features WHS 21. Natural ground cover WHS 22. Planetable contours XX 23. Stereoscopic instrument contours XX 24. Contours in general XX 25. Spot elevations XX 26. Other physical features WHS

CULTURAL FEATURES

27. Roads WHS 28. Buildings WHS 29. Railroads XX 30. Other cultural features WHS

BOUNDARIES

31. Boundary lines XX 32. Public land lines XX

MISCELLANEOUS

33. Geographic names WHS 34. Junctions MMS 35. Legibility of the manuscript WHS 36. Discrepancy overlay XX 37. Descriptive Report MMS 38. Field inspection photographs WHS 39. Forms WHS

40. William H. Shearouse Milton M. Slavney  
Reviewer Supervisor, Review Section or Unit  
William H. Shearouse Milton M. Slavney

41. Remarks (see attached sheet)

FIELD COMPLETION ADDITIONS AND CORRECTIONS TO THE MANUSCRIPT

42. Additions and corrections furnished by the field completion survey have been applied to the manuscript. The manuscript is now complete except as noted under item 43.

R. R. Wagner M. M. Slavney  
Compiler Supervisor

43. Remarks:

Field Edit Report  
(Shoreline)  
Quadrangles T-10772 and T-10762  
Project PH-5704

51. Methods.

The distance to the MHWL was spot checked along the shoreline. Additions and corrections to the manuscript have been noted on the field-edit sheet in red and on the photographs in violet.

A topographic sheet (tin-sheet) has been constructed to cover the changes in the vicinity of Dauphin Island. A sketch or overlay of the topographic sheet is included showing shoreline changes and new channel around Pass Drury. PASS AUX HERONS LT 18, 1958 was moved since photography and a new location was obtained for hydrographic purposes. The location is shown on the field-edit sheet. Pelican Bay Daybeacon was relocated with the use of the topographic sheet--see (52. Adequacy of compilation).

The topographic sheet is being retained by the East Coast Field Party. Any new additions or changes will be edited on this sheet and this sheet will become part of the hydrographic records.

Field-edit information has been shown on field-edit sheets T-10773 and T-10776 and infrared photograph 9Nov. 57L2502.

Two project maps of the U.S. Army Engineers is being included in this report showing the marked boundaries of Fort Gaines and The boundaries of Dauphin Island Annex to Brookley Air Force Base.

52. Adequacy of compilation.

The map compilation appears complete and adequate except for the following remarks: Corrections of the tree line as shown on photograph 57L2502. (The nine-lens photograph of this area is being kept for photo-hydro support.) Correction in the location of Pelican Bay Daybeacon. It was noticed that L.F.B.'s horizontal direction (60-14-12) from photo-pt. 72-01 does not satisfy the location of the daybeacon as shown on Cronflex Positive T-10772. A new location was

obtained by plane-table methods. The theodolite cut taken in 1958 checks the new location of the daybeacon. It is believed that the daybeacon has not been moved since photography. See field-edit sheet for location.

See field-edit sheet T-10762 for lettering of longitude.

53. Map accuracy.

The shoreline of the maps is accurate except for the changes since photography as shown on the field-edit sheet.

54. Recommendations.

There are no recommendations

55. Examination of proof copy.

The following person is able to read a map of this area with assurance and has agreed to examine a proof copy of the map for possible errors: Byrd L. Moore, 36 N. Section Street, Fairhope, Alabama.

Geographic names:

BIG PASS MARGARET-Two people in the Dauphin Island area were contacted on this matter. Both claimed that the proper name for this pass should be WOODS BAYOU. Their names, years a residence and addresses are as such: S.S. Mallon, 49 years, Dauphin Island, Alabama and Pete Patronas, 38 years, Dauphin Island, Alabama. Both of these men also claim that BAYOU MATAGUA should be called SPRING BAYOU. It should be noticed that neither of these passes are open.

BROOKLAY AFB RECREATION FACILITIES-The first word of this name is spelled wrong. BROOKLAY should be spelled BROOKLEY. This military base is an annex to Brookley Air Force Base. It has recreational Facilities for the Air Force personnel. It is an Air Sea Rescue Station. See enclosed U.S. Army Engineer's Project Map.

Boundaries:

For the marked boundaries of Ft. Gaines and the boundaries of the Air Force Base on Dauphin Island see enclosed U.S. Army Engineer's Project Map.

Submitted:

*Michael L. Olivier*  
Michael L. Olivier  
Ensign - C&GS  
Photo Hydro Support Unit 720

MARCH 1960  
TAMPA  
WHS

REVIEW REPORT T-10762  
PLANIMETRIC  
January 12, 1968

61. GENERAL STATEMENT:

See Summary accompanying the Descriptive Report.

62. COMPARISON WITH REGISTERED TOPOGRAPHIC SURVEYS:

Comparison was made with copies of Registered Surveys T-5536 and T-5537, each compiled at 1:10,000 scale from photography of 23 June 1934. The changes between these two surveys and T-10762 have been indicated on the Comparison Print in blue.

Survey T-10762 supersedes the two prior surveys for nautical chart construction.

63. COMPARISON WITH MAPS OF OTHER AGENCIES:

Comparison was made with U.S.G.S. LITTLE DAUPHIN ISLAND, ALA., 1:24,000 scale 7½ minute quadrangle, edition of 1958. The shoreline of the two surveys are in fairly good agreement except in the area of Pass Drury. Here a new channel has been dredged from Little Dauphin Bay southeastward and thence into Mobile Bay.

64. COMPARISON WITH CONTEMPORARY HYDROGRAPHIC SURVEYS:

Comparison was made with a copy of smooth sheet H-8524, ECFP-10-1-60 and H-8642, ECFP-10-10-61. The following objects appearing on the smooth sheets are not shown on survey T-10762 and are not visible on photographs of the area:

Object	Latitude	Longitude
Pipe	30° 15' 28"	88° 06' 18"
Wreck	30° 15' 39"	88° 06' 22"
Pile	30° 15' 35"	88° 07' 09"
Pile	30° 15' 37"	88° 07' 14"

65. COMPARISON WITH NAUTICAL CHARTS:

Comparison was made with Chart 872-SC, 2nd edition, corrected thru NM 38-Sept. 17, 1966. The shoreline of the two surveys are in good agreement except in the area of Confederate Pass and Pass Drury. Pass Drury, on the chart, has been filled by dredging and dikes. The chart was evidently corrected from photographs of a later date than that available for compilation of survey T-10762.



The channel markers on the chart in Little Dauphin Bay are <sup>not</sup> in agreement with their positions on the manuscript nor on the boat sheet. None of these markers (single piles) are visible on photographs of the area.

A snag located at latitude  $30^{\circ} 15' 37''$ , longitude  $88^{\circ} 05' 51''$  and the wreck at  $30^{\circ} 15' 39'' - 88^{\circ} 06' 22''$  are not visible on photographs of the area.

Dauphin Island Entrance Channel Light 6, Dauphin Island Entrance Channel Daybeacon 8 and Dauphin Island Boat Slip Lights were all established subsequent to compilation and field edit of this survey.

66. ADEQUACY OF RESULTS AND FUTURE SURVEYS:

This survey complies with instructions and meets the National Standards of Map Accuracy. Refer to page 22 A.

67. PHOTOGRAPHS:

The following photographs were examined during final review: 56750, 56863, 56864, 57L2760 and 2761, 57L2763, 57L2500, 57L2502 and 57L2503.

Reviewed by:

Leo F. Beugnet  
Leo F. Beugnet

Approved by:

For J. Bull  
J. Bull, RADM, USESSA  
Director, Atlantic Marine Center

Approved by:

Charles L. Leman  
Chief, Photogrammetric Branch 199

R. H. Van Pelt  
Chief, Photogrammetric Division

John A. Boyer  
Chief, Nautical Chart Section  
Marine

T-10762  
Map Accuracy

This survey, and T-10772 adjoining to the south, were revised (RS-890 and RS-891) in 1962. Refer to pages 23 and 24 of this Descriptive Report and pages 22 through 25 of the Descriptive Report for T-10772.

The Revision Survey compiler found survey T-10772 to be in error in the horizontal position of features in the Fort Gaines area. An incomplete compilation report on the revision work (RS-891) is included in the Descriptive Report for T-10772. No compilation report for the revision (RS-890) of T-10762 was found; however, T-10762 is in error in the horizontal position of shoreline features at the junction with T-10772. A note accounting for the error is included on the manuscript.

*S. G. Blankenbaker*  
S. G. Blankenbaker



PH-5704  
Revision Data

RS-890 (T-10762)

This map was one of 18 project maps revised in 1962 with 1962 photography. Refer to project revision diagram on the following page.

Revision Survey information was not carried forward to the original shoreline surveys. The revised details have been applied to contemporary hydrographic surveys.

Copies of the revision surveys will be filed with other project (PH-5704) data in the Federal Records Center.

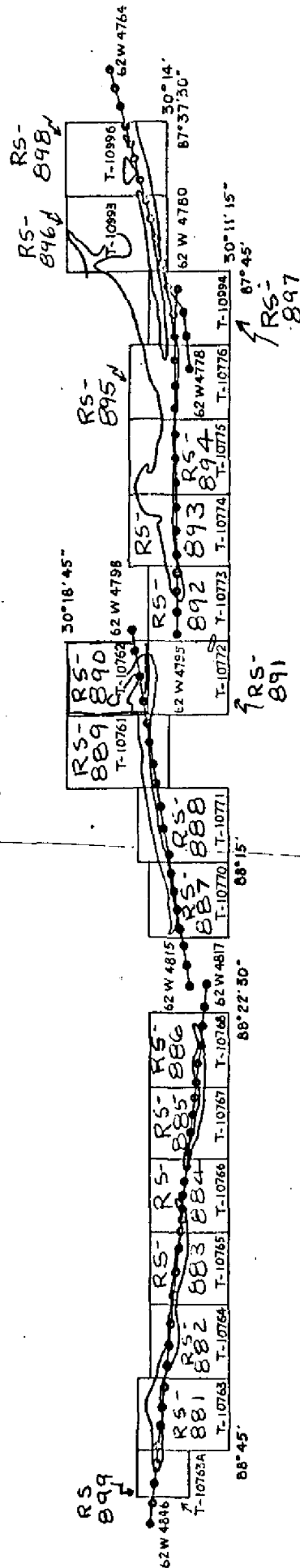
Compilation reports for some revision surveys are lost. Available reports are included in the Descriptive Reports for the registered shoreline surveys. *ADD*

*No compilation report was found for this map (RS-890)*



MOBILE BAY, ALABAMA - MISSISSIPPI SOUND, MISS.

SCALE - 1:10,000  
SEPTEMBER, 1962



- 1:20,000 RC-8 (Pan.) Photographs. Photographs also 1:10,000 ratio prints for Hydro Support.