

10766

Original

10766

10766

Form 504	
U. S. DEPARTMENT OF COMMERCE	
COAST AND GEODETIC SURVEY	
DESCRIPTIVE REPORT	
Type of Survey	Planimetric
Field No.	Office No. T-10766
LOCALITY	
State	Mississippi
General locality	Mississippi Sound
Locality	Horn Island Pass
1958-1962 *	
CHIEF OF PARTY	
R. F. Lanier, Chief of Party	
W. F. Deane, Baltimore District Office	
LIBRARY & ARCHIVES	
DATE	

USCOMM-DC 5087

* REFER TO PAGE 6 OF THIS REPORT

DESCRIPTIVE REPORT - DATA RECORD

T-10766

PROJECT NO. (II):			
PH-5704			
FIELD OFFICE (II):		CHIEF OF PARTY	
Pascagoula, Mississippi		Roger F. Lanier	
PHOTOGRAMMETRIC OFFICE (III):		OFFICER-IN-CHARGE	
Baltimore, Maryland		William F. Deane	
INSTRUCTIONS DATED (II) (III):			
II 23 June 1958 III 6 Oct. 1959			
METHOD OF COMPILATION (III):			
Graphic			
MANUSCRIPT SCALE (III):		STEREOSCOPIC PLOTTING INSTRUMENT SCALE (III):	
1:10,000			
DATE RECEIVED IN WASHINGTON OFFICE (IV):		DATE REPORTED TO NAUTICAL CHART BRANCH (IV):	
January 18, 1959 FINAL APRIL 30, 1968			
APPLIED TO CHART NO.		DATE:	DATE REGISTERED (IV):
GEOGRAPHIC DATUM (III):		VERTICAL DATUM (III):	
N. A. 1927		MHW MEAN LOW WATER EXCEPT AS FOLLOWS: Elevations shown as (25) refer to mean high water Elevations shown as (5) refer to sounding datum i.e., mean low water or mean lower low water	
REFERENCE STATION (III):			
WET 2, 1935			
LAT.:	LONG.:	<input checked="" type="checkbox"/> ADJUSTED <input type="checkbox"/> UNADJUSTED	
30° 12' 44.600"	88° 29' 56.821"		
PLANE COORDINATES (IV):		STATE	ZONE
= 198,610.86 x = 605,570.21		Mississippi	East
ROMAN NUMERALS INDICATE WHETHER THE ITEM IS TO BE ENTERED BY (II) FIELD PARTY, (III) PHOTOGRAMMETRIC OFFICE, OR (IV) WASHINGTON OFFICE. WHEN ENTERING NAMES OF PERSONNEL ON THIS RECORD GIVE THE SURNAME AND INITIALS, NOT INITIALS ONLY.			

DESCRIPTIVE REPORT - DATA RECORD

FIELD INSPECTION BY (II): W. M. Reynolds M. A. Stewart		DATE: Nov. Dec. 1958
MEAN HIGH WATER LOCATION (III) (STATE DATE AND METHOD OF LOCATION): 1958 Field Inspection on photographs dated November 1957 1962 FIELD EDIT		
PROJECTION AND GRIDS RULED BY (IV): P. J. Dempsey		DATE January 5, 1959
PROJECTION AND GRIDS CHECKED BY (IV): R. D. Shoup		DATE March 5, 1959
CONTROL PLOTTED BY (III): I. I. Sapperstein R. J. Pate		DATE May 6, 1959
CONTROL CHECKED BY (III): R. R. Wagner		DATE May 7, 1959
RADIAL PLOT STEREOSCOPIC CONTROL EXTENSION BY (III): L. A. Senasack		DATE October 19, 1959
STEREOSCOPIC INSTRUMENT COMPILATION (III): Inapplicable	PLANIMETRY	DATE
	CONTOURS	DATE
MANUSCRIPT DELINEATED BY (III): R. M. Whitson J. Honick		DATE October 27, 1959
SCRIBING BY (III):		DATE
PHOTOGRAMMETRIC OFFICE REVIEW BY (III): R. Glaser		DATE November 4, 1959
REMARKS: FIELD EDIT : APRIL 30 1962		

FORM C&GS-181c
(3-66)U.S. DEPARTMENT OF COMMERCE
ENVIRONMENTAL SCIENCE SERVICES ADMINISTRATION
COAST AND GEODETIC SURVEY

DESCRIPTIVE REPORT - DATA RECORD

CAMERA (KIND OR SOURCE) (III):

Nine-lens and single lens "L"

PHOTOGRAPHS (III)

NUMBER	DATE	TIME	SCALE	STAGE OF TIDE
56624 & 56625 57-L-2292	11-9-57 "	1211 "	1:10,000 "	0.2 ft. above MLW "

TIDE (III)

PREDICTED

Diurnal

	RATIO OF RANGES	MEAN RANGE	EXTREME RANGE
REFERENCE STATION: Pensacola, Florida			1.3
SUBORDINATE STATION: Horn Island Pass, Miss.			1.7
SUBORDINATE STATION:			

WASHINGTON OFFICE REVIEW BY (IV):

Leo F. Beugnot, Atlantic Marine Center

DATE:

January 1968

PROOF EDIT BY (IV):

DATE:

NUMBER OF TRIANGULATION STATIONS SEARCHED FOR (II):

0

RECOVERED:

0

IDENTIFIED:

2*

NUMBER OF BM(S) SEARCHED FOR (II):

0

RECOVERED:

0

IDENTIFIED

0

NUMBER OF RECOVERABLE PHOTO STATIONS ESTABLISHED (III):

0

NUMBER OF TEMPORARY PHOTO HYDRO STATIONS ESTABLISHED (III):

0

REMARKS:

*

Two stations established.

T-10764

COMPILATION RECORD

COMPLETION DATE

REMARKS

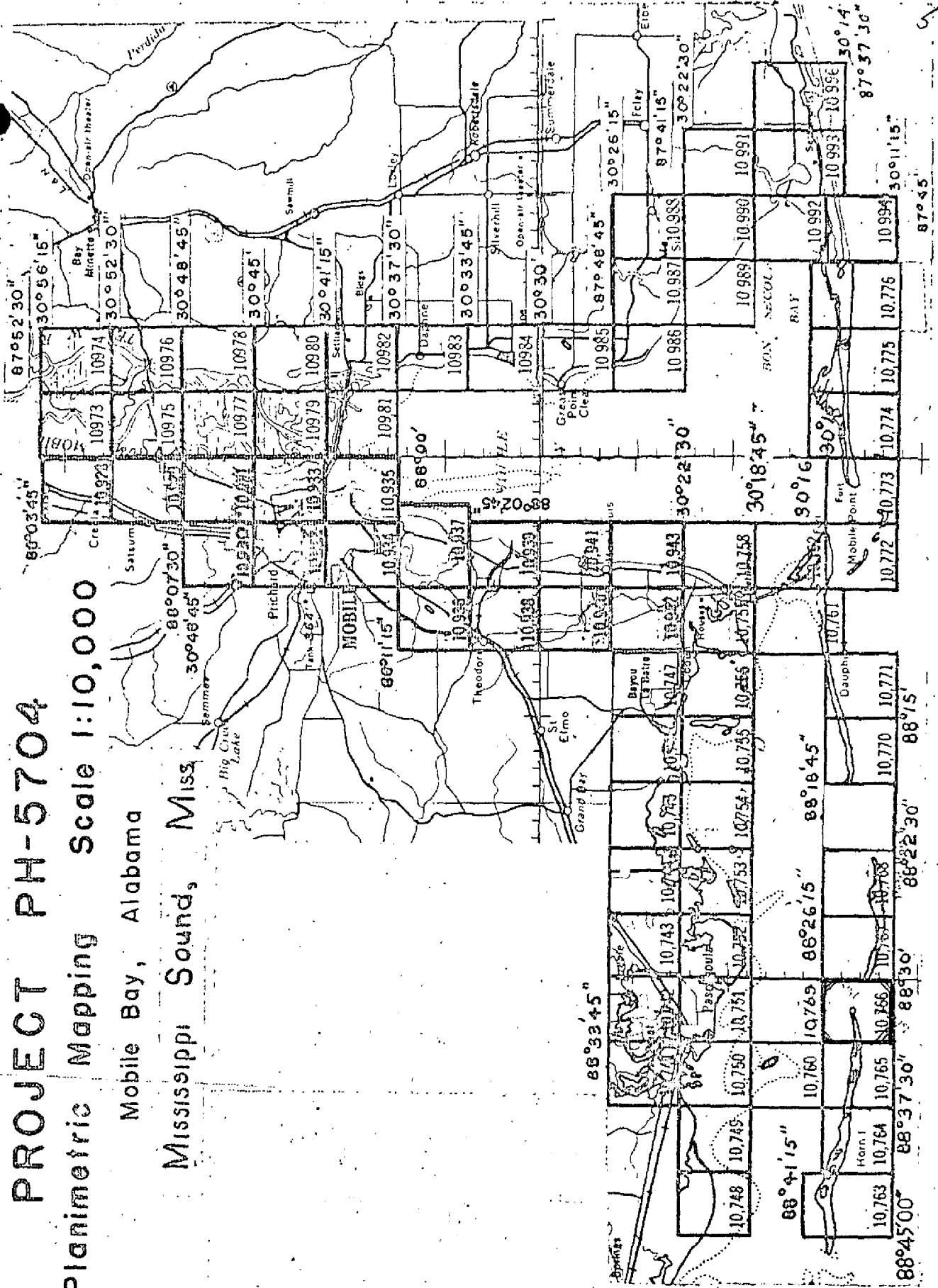
Compiled	November 1959	
Field Edit	April 1962	
Final Review	January 1968	

PROJECT PH-5704

Planimetric Mapping Scale 1:10,000

Mobile Bay, Alabama

Mississippi Sound, Miss



SUMMARY TO ACCOMPANY
DESCRIPTIVE REPORT T-10766

Planimetric Survey T-10766 is one of seventy-four similar surveys in Project PH-5704. The primary purpose of the project was to provide shoreline for nautical charts and hydro-support data for hydrographic surveys to be made in the area. This survey covers the east end of Horn Island and the west end of Petit Bois Island in the area of Horn Island Pass.

Field work preceded compilation. This consisted of recovery and/or establishment and identification of horizontal control, shoreline, and field inspection, Investigation of Geographic Names and Report on Boundaries.

Compilation was at 1:10,000 scale by graphic methods using the 9-lens photography of November 1957, supplemented by single-lens photography of the same date. Cronaflex copies of the manuscript along with specially prepared photographs and ozalid copies were furnished for preparation of the hydrographers boat sheet, location of hydro signals by photogrammetric methods and for field edit use.

The manuscript is a vinylite sheet $3 \frac{3}{4}$ minutes in latitude by $3 \frac{3}{4}$ minutes in longitude, which was scribed and reproduced on cronaflex. One cronar positive and one cronar negative are provided for record and registry.

* THIS MAP WAS REVISED IN 1962 (REFER TO PAGES 23 AND 24)

FIELD INSPECTION REPORT
QUADRANGLES T-10760 and T-10763 through T-10769
PROJECT Ph-5704

2. Areal Field Inspection These maps are located along the southern coast of Mississippi south of the town of Pascagoula. The land area is comprised of offshore islands in Mississippi Sound. The islands are Horn Island, Petit Bois Island and Round Island. All of the islands are un-inhabited and are narrow stretches of sand beaches and dunes. Round Island is the smallest of the three and is thickly wooded except for a narrow sand spit at the north end. Horn Island is thickly wooded in spots with the remainder being sand dunes and beaches with scattered trees. Petit Bois Island is mainly sand and has a few scattered trees. There is no land area within the limits of quadrangle T-10769. The island appearing on the index layout has washed away. A folder was not submitted for this map.

Field inspection is believed complete and was performed on the following nine-lens and infra-red photographs, 56616 through 56623, 56626, 56702, 56703, 56735 through 56737, 57L2279 through 57L2281, 57L2283 through 57L2291 and 57L2300. No items were deliberately left for field edit.

Photography was of good quality and no difficulty was encountered in their interpretation in the field. Attention is called to the areas of marsh where the photographic tone is inconsistent. These areas were closely inspected by walking over the ground and the limits of marsh was indicated at the same time. In some areas the limits were indefinite on the ground as well as the photographs and the limits were generalized. Local information revealed that the ground was extremely wet at the time of photography and it is believed that this is responsible for some of the indefinite limits. Also, the wind has probably deposited the loose sand from surrounding areas over parts of the marsh making the ground stable by the time of field inspection.

The marsh limits along the west side of map T-10763 does not agree with the limits as shown on manuscript T-9385. These limits have been correctly indicated on photograph 56616 and revisions can be made in the compilation office.

Since the photographic tones in marsh areas were inconsistent, the limits of marsh have been indicated in their entirety on the photographs.

3. Horizontal Control All Coast and Geodetic Survey Control was searched for but only three stations were recovered. A scheme of third-order triangulation was observed. The following stations were established, CRAB 2, SHOE 3, HORSE, ROUND 2, HORN 3, NECK, SMALL, LAKE 2

and Mississippi Sound, Intracoastal Waterway, Round Island South Spit Light 2. Standard methods were used and triangle closures were satisfactory. Unadjusted field computations were made. Traverses were run from the above stations to locate points opposite the centers of the photographs. All traverses not tied to other stations were double chained and traverses having more than one leg were tied in by azimuth at the ends.

Stations BOIS 1935 and SIP 1935 were not recovered. The islands on which the stations were located are no longer in existence.

The following stations were reported lost, BOIS 1935, LAKE 1935, SIP 1935, HORN 2 1935, SHOE 2 1935, CUT 1910, CRAB 1935, and ROUND 1921.

4. Vertical Control One tidal bench mark, Horn Island Pass Lighthouse, Mississippi Sound, Tidal Bench Mark 1 (1917), was searched for and probably recovered.

5. Contours and Drainage Contours are inapplicable. All drainage is run off from the islands into the sound and gulf.

6. Woodland Cover Adequately covered on the photographs.

7. Shoreline and Alongshore Features The mean high water line was indicated by walking along the beach at various places and is fast land throughout the area.

The horizontal distance between the mean high and low water lines is too short for mapping, at the project scale.

There are no bluffs or cliffs in the area.

There are no docks, wharves, piers or landings.

The cable area to Horn Island Lighthouse was investigated. There are no markings along the beach indicating the location of the cable. The Coast Guard station in Pascagoula was unable to verify the existence of the cable, however, the Horn Island Light is now operated by gas.

8. Offshore Features The only offshore features are the aids to navigation.

9. Landmarks and Aids Landmarks and fixed aids to navigation are adequately covered by form 567, which will be submitted at a later date.

There are no Aeronautical Aids in the area.

There are no outstanding interior features.

10. Boundaries, Monuments and Lines See Special Report Boundaries Ph-5704, which will be submitted at a later date.

11. Other Control The following recoverable topographic stations were established, STAN 1958, DAVE 1958, JOSH 1958, LUKE 1958, RUBY 1958, MIKE 1958, ROSE 1958, MARY 1958, GARY 1958, GAIL 1958 and PATE 1958.

12. Other Interior Features There are no roads or buildings in the area.

There are no bridges or cables over navigable waters.

There are no airports or landing fields.

13. Geographic Names See Special Report Geographic Names Project Ph-5704. This report will be submitted at a later date.

14. Special Reports and Supplemental Data

Special Report Boundaries, Project Ph-5704.

Special Report Geographic Names, Project Ph-5704.

Approved:

Roger F. Lanier
Roger F. Lanier

Submitted:

William M. Reynolds
William M. Reynolds

SCALE FACTOR

1 FT. = .3048006 METER
COMPUTED BY:

R. J. Pate

DATE _____

6 May 1959

CHECKED BY: R. R. Wagner

DATE _____

6 May 1959

- 8 - //

PHOTOGRAMMETRIC PLOT REPORT
Project PH-5704
Survey Nos. T-10763 thru T-10768

21. AREA COVERED

This radial plot covers the area of surveys listed above. These are planimetric surveys, along Mississippi Sound and includes Petit Bois and Horn Islands.

22. METHOD - RADIAL PLOT

Map Manuscripts:

Mylar sheets with polyconic projections in black and Mississippi State Grid, East Zone, in red were furnished by the Washington Office. Survey T-10768 also had Alabama State Grid, West Zone, in green.

All control points and substitute points were plotted in the Tampa Office prior to transmitting to this office.

A sketch showing the layout of surveys, distribution of control and photograph centers is attached to this report.

Photographs:

Eighteen (18) nine-lens photographs and seventeen (17) single lens photographs, ratioed to a scale of 1:10,000 were used in this plot and are numbered as follows:

Single-lens

57-L-2276 thru 2292

Nine-lens

56616 thru 56628

56734 thru 56738

Templets:

The radial lines on the nine-lens photographs were traced onto the vinylite templets using the fiducial marks on the master templet to correct for film, paper distortion, and chamber displacement. Vinylite templets were made for each of the single lens photographs but no adjustment was made for paper distortion.

Closure and Adjustment to Control:

The radial plot was constructed directly on the map manuscripts. The construction started with the templets of the nine-lens photographs at the east end of Petit Bois Island and extended westward to and including Horn Island. After the nine-lens plot was laid in the area of Horn Island, single lens photographs were used to supplement the original plot and to get additional pass points the compiler needed to delineate this long narrow island. In constructing a rigid plot two control stations could not be held: They are CRAB 2, 1958 and LAKE 2, 1958. (see item 23)

12.
- 8 -

Transfer of Points:

The positions of all photogrammetric points and photograph centers were pricked on the top templet and drilled down through the templets and manuscripts.

23. ADEQUACY OF CONTROL

The density and distribution of control was adequate. One control station, MISSISSIPPI SOUND PASCAGOULA CHANNEL DAYBEACON 11A, 1958 was office identified.

The following control could not be held in the radial plot:

LAKE 2, 1958 - The radially plotted position for the substitute point falls 0.7 mm to the SE of the plotted position. This new position is approximately 20 feet closer to the station and almost in azimuth. It is believed an error was made in the measurement of the distance, also see note on the identification card in reference to the feet and meters not checking.

CRAB 2, 1958 - The radially plotted position for the substitute point falls 0.6 mm to SE of the plotted position. The point identified is a tip of a long narrow projection of grass. It is believed there may be a difference in grass line between the time the photograph was taken and time of field inspection.

24. SUPPLEMENTAL DATA

No graphic control surveys were used in the radial plot.

25. PHOTOGRAPHY

The nine-lens photographs were received in this office quite badly warped - giving the surface a wash-board effect. This gave some trouble in trying to adjust the master templet to the chambers.

The tone quality of the nine-lens office photographs was very poor compared to the field prints. The photographs appear to be over-exposed and under-developed. Due to this, many fiducial marks are almost lost.

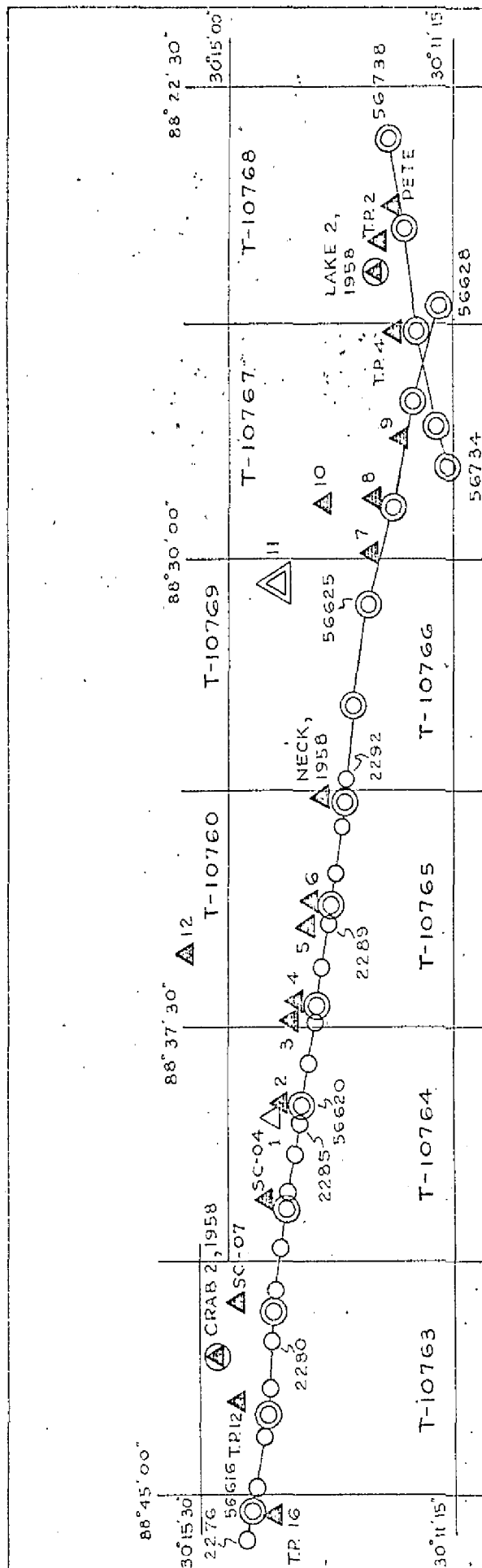
Chamber No. 2 on photograph No. 56735 has a double image and appears to have had a double exposure in the printing process.

26. HORN ISLAND WEST LIGHT

Photo point 63-01 used for the location of this light may be in error as much as one (1) millimeter. This point falls very close to the flight line and between photograph centers. The point was established by placing photograph 56616 in a vertical projector and adjusting the center chamber for scale and pricking it along the radial lines for location. It is recommended that the position of this light be verified by the hydrographer in the field.

Respectfully submitted
19 October 1959

Leroy A. Senasack
Leroy A. Senasack
Carto. Photo. Aid.



LAYOUT SKETCH

PROJECT PH-5704

SURVEYS T-10763 thru T-10768

- 1 - SHOE 3, 1958
- 2 - T.P. 8
- 3 - HORSE, 1958
- 4 - T.P. 7
- 5 - HORN 3, 1958
- 6 - T.P. 6
- 7 - WET 2, 1935
- 8 - GRASS
- 9 - SMALL, 1958
- 10 - HORN ISLAND LIGHT HOUSE, 1910
- 11 - MISSISSIPPI SOUND PASCAGOULA CHANNEL DAYBEACON 11A, 1958
- 12 - ROUND ISLAND SOUTH SPIT LIGHT 2, 1958

- Single lens office photographs
- ⊙ Nine lens office photographs
- △ Control station identified
- ⊗ Control station not held in plot
- ⚡ Control station office identified
- △ Control station not identified

COMPILATION REPORT
T-10763 thru T-10768

The Field Inspection Report covering the area of Surveys T-10763 thru T-10768 has been submitted with the Descriptive Report for T-10760.

A COPY OF THE FIELD INSPECTION REPORT IS INCLUDED IN THIS DESCRIPTIVE REPORT.

31. DELINEATION

The Map Manuscripts were delineated by graphic methods.

32. CONTROL

Refer to the Photogrammetric Plot Report.

The horizontal control with reference to identification, density and placement was considered to be adequate.

33. SUPPLEMENTARY DATA

Special Report Boundaries PH-5704 for Mississippi-Alabama boundary.
USGS Petit Bois Island Quadrangle and Nautical Charts No. 874 and No. 875 were used for Geographic Names.

34. CONTOURS AND DRAINAGE

Contours - Inapplicable.
Drainage - No comment.

35. SHORELINE AND ALONGSHORE DETAILS

Shoreline inspection was adequate. Also see item 7 of field inspection report, T-10760.

36. OFFSHORE DETAILS

No comment.

37. LANDMARKS AND AIDS

Forms 567 have been submitted for three (3) Non-Floating Aids to Navigation.

There were no Aeronautical Aids or landmarks in this area.

38. CONTROL FOR FUTURE SURVEYS

Forms 524 for five (5) recoverable topographic stations were forwarded to the Washington Office on October 29, 1959.

Forms 524 for six (6) recoverable topographic stations are being submitted with this report.

A list of the eleven (11) recoverable topographic stations have been prepared and included in paragraph 49 of this report.

39. JUNCTIONS

To the west - junction was made with USC&GS Topographic Map T-9385 (1950), scale 1:20,000 - and found to be in disagreement with the south shoreline of Horn Island; due to probable change in the shoreline since 1950.

Junction has been made between surveys.

Junction to the north with Surveys T-10760 and T-10769 is in an all-water area.

To the east and to the south are all-water areas.

40. HORIZONTAL AND VERTICAL ACCURACY

No comment.

41. BOUNDARIES

The Mississippi-Alabama boundary was transferred to manuscript T-10768 from the U.S.C.S. Petit Bois Island quadrangle, using a reflecting projector to adjust for scale difference.

42. thru 45. Not applicable.

46. COMPARISON WITH EXISTING MAPS

Comparison has been made with USGS Horn Island Quadrangle, scale 1:62,500, edition of 1942; and USGS Petit Bois Island Quadrangle, scale 1:24,000, edition of 1958.

47. COMPARISON WITH NAUTICAL CHARTS

Comparison has been made with Charts No. 874, scale 1:40,000, 2nd edition published July 1951, revised March 1959; and No. 875, scale 1:40,000, 1st combined edition, published January 1952, revised August 1959.

Items to be applied to Nautical Charts immediately:

None.

Items to be carried forward:

None.

Respectfully submitted
29 October 1959

Frank J. Tarcza
Frank J. Tarcza
Super. Carto. (Photo.)

Approved and forwarded

William F. Deane
William F. Deane
CDR, C&GS
Baltimore District Officer

48. GEOGRAPHIC NAMES LIST

Alabama

Gulf of Mexico *

Horn Island *

Horn Island Pass *

Jackson County *

Mississippi *

Mississippi Sound *

Mobile County

Petit Bois Island *

The Horseshoe (Chart 875)

From USGS Horn Island Quadrangle; USGS Petit Bois Island Quadrangle;
USC&GS Nautical Charts No. 874 and No. 875.

* Names apply to T-10766

* - Names approved

JUNE 25, 1968 Wright

A. St. W. Fickett

~~17457~~ 18

PHOTOGRAMMETRIC OFFICE REVIEW

T-10763 thru T-10768

1. Projection and grids ✓ 2. Title ✓ 3. Manuscript numbers ✓ 4. Manuscript size ✓

CONTROL STATIONS

aa. Classification label ✓

5. Horizontal control stations of third-order or higher accuracy ☒ 6. Recoverable horizontal stations of less than third-order accuracy (topographic stations) ☒ 7. Photo hydro stations ☒ 8. Bench marks ☒
9. Plotting of ^{Theod.} sextant fixes ☒ 10. Photogrammetric plot report ☒ 11. Detail points ☒

ALONGSHORE AREAS

(Nautical Chart Data)

12. Shoreline ✓ 13. Low-water line ✗ 14. Rocks, shoals, etc. ✗ 15. Bridges ✗ 16. Aids to navigation ✓ 17. Landmarks ✗ 18. Other alongshore physical features ✓ 19. Other along-shore cultural features ✗

PHYSICAL FEATURES

20. Water features ✓ 21. Natural ground cover ✓ 22. Planetable contours X 23. Stereoscopic instrument contours X 24. Contours in general X 25. Spot elevations X 26. Other physical features X

CULTURAL FEATURES

27. Roads X 28. Buildings X 29. Railroads X 30. Other cultural features X

BOUNDARIES

31. Boundary lines ✓ 32. Public land lines X

MISCELLANEOUS

33. Geographic names _____ 34. Junctions _____ 35. Legibility of the manuscript _____ 36. Discrepancy overlay X _____ 37. Descriptive Report _____ 38. Field inspection photographs _____ 39. Forms _____

40. C. Glaser Reviewer

Supervisor, Review Section or Unit

41. Remarks (see attached sheet)

Field edit applied by Final Review

FIELD COMPLETION ADDITIONS AND CORRECTIONS TO THE MANUSCRIPT

42. Additions and corrections furnished by the field completion survey have been applied to the manuscript. The manuscript is now complete except as noted under item 43.

manuscript is now complete except as noted under item

Leo F. Benguet
Compiler

Supervisor

43. Remarks:

U. S. DEPARTMENT OF COMMERCE
COAST AND GEODETIC SURVEY

Field Edit Report
(Shoreline)
Quadrangles T-10942, T-10741 thru
T-10758 & T-10760 thru T-10768
Project PH-5704

51. Methods

The shoreline was inspected by truck, skiff and walking along the beach. The distance to the MHWL from known points was checked and found to be correct and adequate, except where noted in red on ozalid copies of the manuscripts.

Field edit information has been shown on field edit sheets for T-10741, T-10742, T-10748, T-10749, 10750, T-10765, T-10766 and T-10767.

52. Adequacy of Compilation

The map compilation appears to be complete and adequate.

53. Map Accuracy

The shoreline is accurate, except for changes since photography, as shown on the field edit sheets. However, the Bayou Casotte-Pascagoula area is under extensive development and changes in land marks and shoreline will be many in the next few years. The Pascagoula and Bayou Casotte channels are being redredged at the present time. Since a hydrographic survey of Mississippi Sound is now in progress the hydrographic unit has said that they will delineate the new spoil banks when the dredging is completed.

54. Recommendations

There are no recommendations.

55. Examination of Proof Copy

No one was contacted to examine a proof copy of the map.

Submitted: 30 April, 1962

James H. Blumer
James H. Blumer
Sub Unit 721

REVIEW REPORT T-10766
PLANIMETRIC
January 25, 1968

61. GENERAL STATEMENT:

See Summary accompanying the Descriptive Report.

62. COMPARISON WITH REGISTERED TOPOGRAPHIC SURVEYS:

There were no registered topographic surveys available for comparison purposes at the time of final review.

63. COMPARISON WITH MAPS OF OTHER AGENCIES:

Comparison was made with U.S.G.S. HORN ISLAND EAST, MISS., 1:24,000 scale 7½ minute quadrangle, edition of 1960. The east end of Horn Island eroded badly and some erosion occurred on the west end of Petit Bois Island between 1960 and 1962. The shoreline, in these two areas, as shown on T-10766 is from the Field Edit of April 1962.

64. COMPARISON WITH CONTEMPORARY HYDROGRAPHIC SURVEYS:

Comparison was made with copies of smooth sheets H-8652, ECFP-10-4-62 and H-8646 ECFP-10-15-61. Two temporary dredging range structures shown on smooth sheet H-8646 at latitude 30° 13' 34", longitude 88° 30' 10", and at 30° 13' 50" - 88° 30' 06" are not shown on survey T-10766.

Horn Island Pass Entrance Range Rear Light, shown on the smooth sheet at latitude 30° 13' 05", longitude 88° 30' 03", is not shown on this survey.

Two hydro stations, namely CAL and JOE located at latitude 30° 12' 41", longitude 88° 31' 14" and 30° 13' 35" - 88° 32' 46" respectively, are located in the open water area of Horn Island Pass. There are no objects visible on photograph 56624 at these positions.

65. COMPARISON WITH NAUTICAL CHARTS:

Comparison was made with 1:40,000 scale chart 874-SC, 3rd edition corrected thru NM 41-October 14, 1967.

A platform at latitude 30° 13' 30", longitude 88° 32' 08" is not shown on the manuscript and is not visible on photograph 56624.

The fixed aids to navigation and dredging ranges located on the west end of Petit Bois Island and along the easterly side of Pascagoula Channel are not shown on this survey. Please refer to the last page of this report (an ozalid copy of a portion of the survey) for the location of these features.

66. ADEQUACY OF RESULTS AND FUTURE SURVEYS:

This survey complies with instructions and meets the National Standards of Map Accuracy.

67. Photographs 57-L-2992 and 56623 thru 56625 were examined during final review.

Reviewed by:

Leo F. Beugnet
Leo F. Beugnet

Approved by:

For P. C. Stark
J. Bull, RADM, USESSA
Director, Atlantic Marine Center

Approved by:

Charles Lamm
Chief, Photogrammetric Branch ^{AdS}

R. W. Houtt
Chief, Photogrammetry Division

John A. Boeger
Chief, Nautical Chart Division
^{Marine}

30° 14' 00"

T-10966
7

Markers
Chart 874-SC

22

Temporary dredging Range
H-8646

y = 205,000 FT.

Markers
Chart 874-SC

13' 30"

88° 31' 00"

88° 30' 00"

Rear Range Lt

Front Range Lt

13'
y = 200,000 FT.

30° 13' 00" PASS

HORN ISLAND PASS

Front Range Lt

Markers

Rear Range Lt



56625

T-10966
7

- 23 -

PH-5704
Revision Data

RS-884 (T-10766)

This map was one of 18 project maps revised in 1962 with 1962 photography. Refer to project revision diagram on the following page.

Revision Survey information was not carried forward to the original shoreline surveys. The revised details have been applied to contemporary hydrographic surveys.

Copies of the revision surveys will be filed with other project (PH-5704) data in the Federal Records Center.

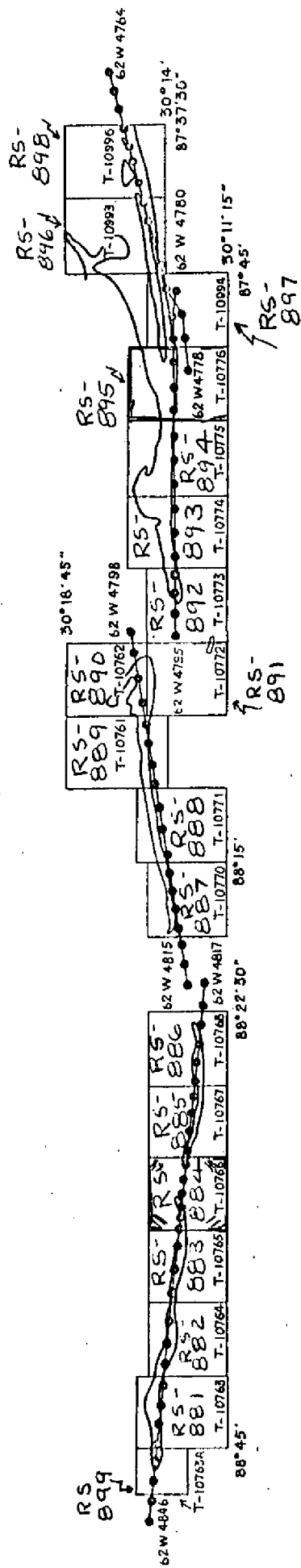
Compilation reports for some revision surveys are lost. Available reports are included in the Descriptive Reports for the registered shoreline surveys. ~~ADD~~

NO COMPILATION REPORT WAS FOUND FOR THIS SURVEY (RS-884).

PROJECT PH-5704 (REVISION)

MOBILE BAY, ALABAMA - MISSISSIPPI SOUND, MISS.

SCALE - 1:10,000
SEPTEMBER, 1962



• 1:20,000 RC-8 (Pan) Photographs. Photographs also 1:10,000 ratio prints for Hydro Support.