

10770

Original

02201

10770

FORM C&GS-504	
U.S. DEPARTMENT OF COMMERCE ENVIRONMENTAL SCIENCE SERVICES ADMINISTRATION COAST AND GEODETIC SURVEY	
DESCRIPTIVE REPORT	
Type of Survey	Planimetric
Field No.	Office No. T-10770
LOCALITY	
State	Alabama
General locality	Mississippi Sound
Locality	Dauphin Island
<u>1958-60</u> *	
CHIEF OF PARTY R. F. Lanier, Chief of Party A. L. Wardwell, Tampa District Office	
LIBRARY & ARCHIVES	
DATE	

USCOMM-DC 37022-P86

* REFER TO PAGE 6 OF THIS REPORT.

DESCRIPTIVE REPORT - DATA RECORD

T - 10770

PROJECT NO. (II):

PH-5704

FIELD OFFICE (III):

Pascagoula, Mississippi

CHIEF OF PARTY

Roger F. Lanier

PHOTOGRAMMETRIC OFFICE (III):

Tampa, Florida

OFFICER-IN-CHARGE

Arthur L. Wardwell

INSTRUCTIONS DATED (II) (III):

(II)	23 June 1958	
	10 Feb. 1959	(Suppl. 1)
	17 Aug. 1959	(Suppl. 2)
(III)	7 April 1959	
	17 Aug. 1959	(Suppl. 1)
	9 Sept. 1959	(Stereo bridging)
	6 Oct. 1959	(Suppl. 1)
	10 Nov. 1959	(Field & Office Suppl. 3)

METHOD OF COMPILATION (III):

Graphic

MANUSCRIPT SCALE (III):

1:10,000

STEREOSCOPIC PLOTTING INSTRUMENT SCALE (III):

Inapplicable

DATE RECEIVED IN WASHINGTON OFFICE (IV):

31 August 1960 *FINAL*
APRIL 30, 1968

DATE REPORTED TO NAUTICAL CHART BRANCH (IV):

APPLIED TO CHART NO.

DATE:

DATE REGISTERED (IV):

GEOGRAPHIC DATUM (III):

N. A. 1927

VERTICAL DATUM (III): MHW

~~MEAN SEA LEVEL~~ EXCEPT AS FOLLOWS:

Elevations shown as (25) refer to mean high water

Elevations shown as (5) refer to sounding datum

i.e., mean low water or mean lower low water

REFERENCE STATION (III):

DAUPHIN 1935

LAT.:

30° 13' 49.573"

LONG.:

88° 18' 15.159"

☒ ADJUSTED☐ UNADJUSTED

PLANE COORDINATES (IV):

STATE

ZONE

Alabama

West

ROMAN NUMERALS INDICATE WHETHER THE ITEM IS TO BE ENTERED BY (II) FIELD PARTY, (III) PHOTOGRAMMETRIC OFFICE, OR (IV) WASHINGTON OFFICE.

WHEN ENTERING NAMES OF PERSONNEL ON THIS RECORD GIVE THE SURNAME AND INITIALS, NOT INITIALS ONLY.

DESCRIPTIVE REPORT - DATA RECORD

FIELD INSPECTION BY (III):		DATE:
W. M. Reynolds		August 1958
MEAN HIGH WATER LOCATION (III) (STATE DATE AND METHOD OF LOCATION):		
Air photo compilation, date of Photography 9 November 1957. 1958 FIELD INSPECTION 1960 FIELD EDIT		
PROJECTION AND GRIDS RULED BY (IV):		DATE
P. Dempsey		October 1958
PROJECTION AND GRIDS CHECKED BY (IV):		DATE
R. D. Shoup		March 1959
CONTROL PLOTTED BY (III):		DATE
I. I. Sapperstein		May 1959
CONTROL CHECKED BY (III):		DATE
R. R. Wagner		May 1959
RADIAL PLOT OR STEREOSCOPIC CONTROL EXTENSION BY (III):		DATE
R. R. Wagner		Sept. 1959
STEREOSCOPIC INSTRUMENT COMPILATION (III):	PLANIMETRY	DATE
	CONTOURS	DATE
Inapplicable		
MANUSCRIPT DELINEATED BY (III):		DATE
R. E. Smith		September 1959
SCRIBING BY (III):		DATE
R. E. Smith		August 1960
PHOTOGRAMMETRIC OFFICE REVIEW BY (III):		DATE
W. H. Shearouse		September 1959
REMARKS: FIELD EDIT - MARCH 1960		

FORM C&GS-181c
(3-66)U.S. DEPARTMENT OF COMMERCE
ENVIRONMENTAL SCIENCE SERVICES ADMINISTRATION
COAST AND GEODETIC SURVEY

DESCRIPTIVE REPORT - DATA RECORD

CAMERA (KIND OR SOURCE) (III):

C&GS nine-lens and Wild "L" single lens

PHOTOGRAPHS (III)

NUMBER	DATE	TIME	SCALE	STAGE OF TIDE
56741 thru 56744 57L-2484 thru 2489	9 Nov. 1957 "	1406 "	1:10,000 "	0.7 ft. above MLW "

PREDICTED TIDE (III)

Diurnal

	RATIO OF RANGES	MEAN RANGE	STAGE RANGE
REFERENCE STATION: Mobile, Mobile River			1.5
SUBORDINATE STATION: Mobile Point (Fort Morgan)			1.2
SUBORDINATE STATION:			

WASHINGTON OFFICE REVIEW BY (IV):

Leo F. Bengnet, Atlantic Marine Center

DATE:

Jan

February 1968

PROOF EDIT BY (IV):

DATE:

NUMBER OF TRIANGULATION STATIONS SEARCHED FOR (II):

3

RECOVERED:

1

IDENTIFIED:

3

NUMBER OF BM(S) SEARCHED FOR (II):

0

RECOVERED:

0

IDENTIFIED

0

NUMBER OF RECOVERABLE PHOTO STATIONS ESTABLISHED (III):

1

NUMBER OF TEMPORARY PHOTO HYDRO STATIONS ESTABLISHED (III):

0

REMARKS:

*

Includes two stations established, one of which is north of limits of survey.

T-10770

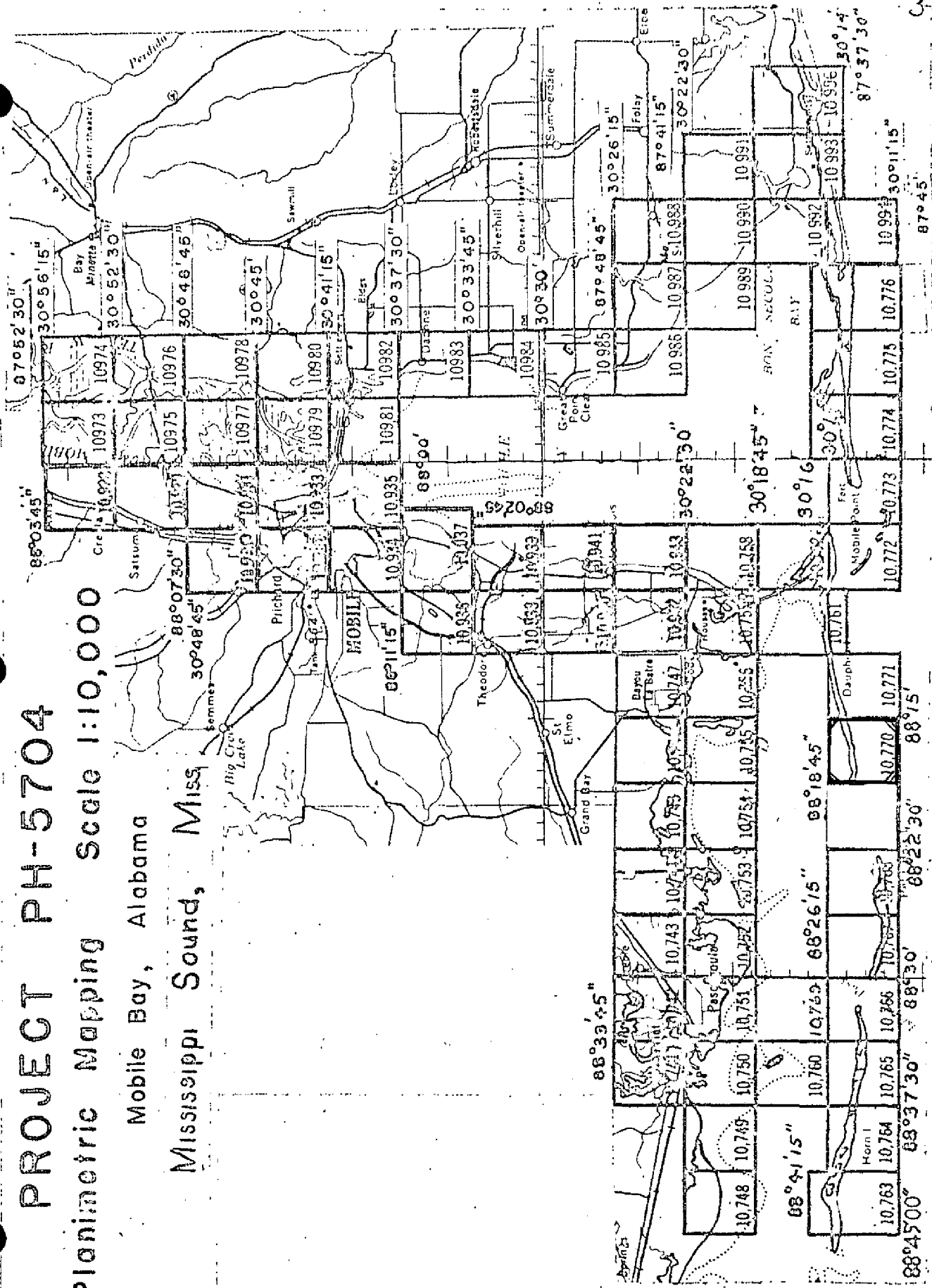
COMPILATION RECORD	COMPLETION DATE	REMARKS
Compiled	September 1959	
Field Edit	March 1960	
Final Review	February 1968	

PROJECT PH-5704

Planimetric Mapping Scale 1:10,000

Mobile Bay, Alabama

Mississippi Sound, Miss



SUMMARY TO ACCOMPANY
DESCRIPTIVE REPORT T-10770

Planimetric survey T-10770 is one of seventy-four similar surveys in Project PH-5704. The primary purpose of the project was to provide new shoreline for nautical charts and photo-hydro support data for hydrographic surveys to be made in the same area. This survey covers the shoreline along the westerly end of Dauphin Island. See page 5 of this report for the position of the survey within the project.

Field work preceded compilation. This consisted of recovery and/or establishment and identification of horizontal control, shoreline and field inspection, Geographic Names Investigation and Report on Boundaries.

Compilation was at 1:10,000 scale by graphic methods using the 9-lens photography of November 1958⁷. Cronaflex copies of the manuscript along with specially prepared photographs and ozalid prints were furnished for preparation of the boat sheet, location of photo-hydro stations and field edit use.

The manuscript was a vinylite sheet 3 3/4 minutes in latitude by 3 3/4 minutes in longitude, which was scribed and reproduced on cronaflex. A cronar positive and cronar negative are provided for record and registry.

* THIS MAP WAS REVISED IN 1962 (REFER TO PAGES 23 AND 24 OF THIS DESCRIPTIVE REPORT).

FIELD INSPECTION REPORT
Map Numbers T-10761, 10762 and
T-10770 through T-10772
Project Ph-5704

2. Areal Field Inspection

These maps are located in southwestern Alabama. The land area is made up of Dauphin Island, Little Dauphin Island and the causeway connecting Dauphin Island to the mainland. The islands are low, sand dune covered beaches, except for the eastern part of Dauphin Island, which is covered with trees. The islands were inaccessible by automobile until 1955, when a causeway and bridge were completed. Extensive development is underway and numerous cottages, roads and bulkheads have been constructed. The area is primarily a summer resort and there are few permanent residents.

Fort Gaines, a fort used during the Civil War, is located in sheet T-10772. A radar station, which upon completion will be a part of the national network, is located along the northern limits of the same sheet.

Field inspection is believed complete as of 1 Sept. 1958. No items were deliberately left for field edit. However, with the development being incomplete, changes will probably be made throughout the above maps.

Photography was of fairly recent date and of good quality. No difficulty was encountered in their interpretation in the field. The tones range from white, in the sand areas, to grey, in the areas covered by light growth of grass, to black, in the areas covered with marsh and trees. Considerable time was spent in the field indicating the inshore limits of marsh. After driving part of the area with a jeep and walking the remainder, the marsh limits were generalized. The photographic tones between definite marsh and the wet sandy areas covered with thick growths of grass were not definite on the photographs or the ground.

The following nine-lens photographs were used for field inspection 56741 through 750, 56863 through 865. The following single lens photographs were used, 57 L 2485 through 2498 and 57 L 2501.

3. Horizontal Control

All Coast and Geodetic Survey control was searched for

and where recovered was identified to control the plot.

The following stations were established by triangulation or traverse methods:

T-10761

CEDAR 3, 1958

Mississippi Sound, Bayou Aloe Entrance Lt. 2, 1958

Intracoastal Waterway, Miss. Sound, Pass Aux Herons Range D Rear Light, 1958

Intracoastal Waterway, Miss. Sound, Pass Aux Herons Range D Front Light, 1958

Pond, 1958 (by traverse)

T-10762

Dauphin Island Water Tank, 1958

Mobile Bay, Pass Aux Herons, Leading Light B, 1958

Mobile Bay, Pass Aux Herons, Light 2, 1958

Mobile Bay, Pass Aux Herons, Light 18, 1958

Mobile Bay, Pass Aux Herons, Range A Front Light, 1958

Mobile Bay, Pass Aux Herons, Range A Rear Light, 1958

T-10770

Sand, 1958 (by traverse)

Intracoastal Waterway, Miss. Sound, Pass Aux Herons Light 82, 1958

T-10771

Land 1958

Isle 1958 (by traverse)

Intracoastal Waterway, Miss. Sound, Pass Aux Herons Range C Front Light, 1958

Intracoastal Waterway, Miss. Sound, Pass Aux Herons Range C Rear Light, 1958

T-10772

FORT GAINES (U.S.E.) 1958

No datum adjustments were made by the field party.

The following stations were reported lost;

T-10761

GILL, 1935

CEDAR 2, 1935

205-5 (Ala. Geod. Sur.), 1935

GULL, 1910

GRANT HOUSE SOUTH GABLE, 1910

GRANT (FLAG), 1910

T-10762

LITTLE DAUPHIN (U.S.E.), 1908

PINE, 1910

DRURY, 1910

DRURY 2, 1935

T-10770

WEST, 1910

HALF, 1935

T-10771

TAM, 1935

4. Vertical Control Inapplicable.
5. Contours and Drainage Contours are inapplicable.

Drainage is run-off into Mississippi Sound and The Gulf of Mexico.

6. Woodland Cover

Adequately covered by notes on the photographs.

7. Shoreline and Alongshore Features

The mean high water line and apparent shoreline were inspected by jeep, skiff, and walking along the beach. Appropriate notes and symbols have been indicated on the photographs. (Shoreline inspection data has been indicated on the following nine-lens photographs, 56741 through 56750 and 56863 through 56865).

There is little horizontal difference between the mean high and low water lines on Dauphin Island. The difference between the two lines could not be mapped at the project scale. The approximate low water line, around some small islands, has been indicated on photograph 56864.

There are no bluffs or cliffs.

All docks, piers, wharves and landings have been indicated on the photographs.

Shore ends of submarine cables have been indicated on the photographs. The cable from Cedar Point to Dauphin Island is no longer used but the cable is still in place. The cable now in use, creases on poles west of the bridge, to the draw span, thence on the bridge towers across the channel.

The cable from Dauphin Island to Fort Morgan Coast Guard Station is still in use.

There are no other shoreline structures.

8. Offshore Features

The only offshore features are aids to navigation.

9. Landmarks and Aids

All landmarks for nautical charts have been indicated on the photographs. Form 567 will be submitted at a later date.

The only significant interior landmark is Fort Gaines in map T-10772.

There are no aeronautical aids in the area.

Fixed aids to navigation were located by one of the following methods:

- 1 Triangulation.
- 2 Theodolite cuts from identifiable photograph points.
- 3 Sextant fixes with check angles.

The daybeacons along a channel in Dauphin Island Bay, map T-10762, are privately maintained by Dauphin Island Marina Inc. These aids were numbered for the convenience of the observer only. Form 567 will be submitted at a later date.

10. Boundaries, monuments and Lines

See Special Report Boundaries Project Ph-5704, which will be submitted at a later date.

11. Other Control

The following recoverable topographic stations were established: Pond, 1958 (T-10761), Sand, 1958 (T-10770) and Isle, 1958 (T-10771). These stations were located by traverse from monumented triangulation stations. They were classified as recoverable topographic stations since a standardized tape was not used in the taping.

12. Other Interior Features

All roads and buildings were field inspected and have been indicated on the photographs.

Measurements for the bridge, along the causeway, to Dauphin Island were not required by the project instructions.

There are no airports or landing fields.

13. Geographic Names

See Special Report Geographic Names, Project Ph-5704, which will be submitted at a later date.

14. Special Reports and Supplemental Data

1. Special Report Boundaries, Project Ph-5704.
2. Special Report Geographic Names, Project Ph-5704.
3. Sketch Third-Order Triangulation, Project Ph-5704,
Bon Secour Bay to Dog Keys Pass.
4. Form 567, Project Ph-5704.

Submitted:

William M. Reynolds
William M. Reynolds

Approved:

Roger F. Lanier
Roger F. Lanier
LT, C&GS
Chief of Party

MAP T-10770

PROJECT NO. 5704

SCALE OF MAP 1:10,000

SCALE FACTOR.

STATION	SOURCE OF INFORMATION (INDEX)	DATUM	LATITUDE OR Y-COORDINATE LONGITUDE OR X-COORDINATE	DISTANCE FROM GRID IN FEET. OR PROJECTION LINE IN METERS.		DATUM CORRECTION	N. A. 1927 - DATUM		FACTOR DISTANCE FROM GRID OR PROJECTION LINE IN METERS	
				FORWARD	(BACK)		FORWARD	(BACK)	FORWARD	(BACK)
DUNE 1952	field Camp	MA 1927	30 14 07.845 88 15 48.880				2416 13070	1605.9 (297.4)	11/115 6 May 59 ✓ 1927 M	
PASS AUX HERONS LIGHT 82 1958	field Camp.	"	30 15 43.445 88 16 01.175	OUTSIDE MAP LIMITS			13328 314	(509.8) (1572.5)	✓ ✓	
DAUPHIN 1935	GPB 63	"	30 13 49.573 88 18 15.159				1526.5 403.4	(321.0) (1199.0)	✓ ✓	

FILED - 304606 METI
COMPUTED BY

R B Wagner

DATE:

20 Apr 59

CHECKED BY: *P. J. Ratz*

7-11

20 May 58

CONV. DC. 97823

PHOTOGRAMMETRIC PLOT REPORT

21. AREA COVERED

Photogrammetric Plot No. 1 of Ph-5704 was for the entrance to Mobile Bay and all of Dauphin Island (manuscripts T-10757, T-10758, T-10761, T-10762, T-10770 through T-10772), and also eastward along a narrow peninsula between Bon Secour Bay and the Gulf of Mexico (manuscripts T-10773 through T-10776).

The sketch on page 14* of this report shows the arrangement of manuscripts, the identified control, index of control, photograph centers and the adjoining manuscripts.

22. METHOD

Radial Plot:

Map manuscripts: -- The projections are 3'45" in latitude and longitude with the exceptions of T-10774 through T-10776 which are 4'45" in latitude. The western limit of T-10770 was extended to 88°19'. See letter (copy attached) to Chief, Photogrammetry Division, dated 17 September 1959. The northern limit of T-10771 was extended to 30°15'30" to accommodate detail in this area.

The plot was run on the joined manuscripts.

Photographs: -- The nine-lens photographs of 19 November 1957 at a scale of 1:10,000 were used to run the plot.

Contact single-lens infra red photographs were taken simultaneously with the nine-lens photographs with Camera "L" being used.

Only those single-lens photographs were located where it was believed they would aid the compiler in locating the photo-hydro stations. They were fixed in position by holding pass points located by the nine-lens photographs.

Templets: -- Vinylite templets were made from nine-lens photographs using master templet 53605 (1956-1957) for correction of transforming errors and paper distortion.

Closure and adjustment to control: -- The plot was run from east to west with conventional methods being used. Two Alabama Geodetic Survey control stations could not be held in the plot. See letter (copy attached) to Chief, Photogrammetry Division, dated 8 September 1959.

* DESCRIPTIVE REPORT T-10757

23. ADEQUACY OF CONTROL

The control was adequate and all of it was positively identified. In the northern part of T-10758, it could not be determined which of two stations was in error, and MON LOUIS RM 2 1930 and JULIET R.M.A. 1910 were returned to the field for verification. It was found that JULIET R.M."A" actually had been destroyed at the time of the original identification and should not have been identified. (See 1959 recovery). A new substitute station was located for MON LOUIS and was held in the plot.

24. SUPPLEMENTAL DATA

None.

25. PHOTOGRAPHY

The nine-lens photographs gave adequate coverage, however the quality of the photographs was poor. Most of the photographs have a muddy appearance and on 56758 three fiducial marks were missing in the wing chambers. See attached letter dated 1 September 1959, Subject "Washboard Affect of nine-lens photographs".

None of the photographs were sufficiently tilted to justify special measures.

26. GENERAL

Dates of completion of the photogrammetric plot by maps are as follows:

T-10757	8 September 1959	T-10772	28 August 1959
T-10758	8 September 1959	T-10773	14 August 1959
T-10761	3 September 1959	T-10774	14 August 1959
T-10762	4 September 1959	T-10775	13 August 1959
T-10770	21 September 1959	T-10776	13 August 1959
T-10771	21 September 1959		

Respectfully submitted

Robert R. Wagner
Robert R. Wagner
Cartographer(Photo)

APPROVED & FORWARDED

William R. Koch
for Arthur L. Wardwell
Tampa District Officer

COMPILATION REPORT T-10770PHOTOGRAMMETRIC PLOT REPORT

Submitted with T-10757 this report.

31. DELINEATION

The graphic method was used.

The field inspection was good and no difficulty was encountered in the interpretation of the photographs.

Single lens photographs 57-L-2486 and 2488 were located by the radial plot to provide additional cuts for detail points.

32. CONTROL

Reference Photogrammetric Plot Report.

33. SUPPLEMENTAL DATA

None.

34. CONTOURS AND DRAINAGE

No statement.

35. SHORELINE AND ALONGSHORE DETAILS

The shoreline inspection was fair and no difficulty was encountered in the delineation of the shoreline. No low-water or shoal lines were shown. The beach is apparently building up slowly since photography because reference measurements from SAND 1958 and DUNE 1958 put the M.H.W.L. about 5 m. seaward from the line as taken from the photographs. ~~The two measurements were ignored for consistency.~~ *Corrected according to field edit.*

36. OFFSHORE DETAILS

None.

37. LANDMARKS AND AIDS

None.

Pass Aux Herons Light 82, 1958, which was located by triangulation during field inspection, falls north of the limits of T-10770.

Its position was submitted on page 3 of 11 pages of Form 567 for Aids to Navigation on 15 July 1960.

38. CONTROL FOR FUTURE SURVEYS

One topographic station has been established and Form 524 submitted. It is listed under Item 49.

39. JUNCTIONS

Junction has been made with T-10771 to the east. There is no contemporary survey to the west, north and south.

40. HORIZONTAL AND VERTICAL ACCURACY

No statement.

46. COMPARISON WITH EXISTING MAPS

Comparison has been made with U.S.G.S. PETIT BOIS PASS quadrangle, 1:24,000, edition of 1958. The west end of DAUPHIN ISLAND has undergone some change.

There is no Coast and Geodetic Survey planimetric map of the area.

47. COMPARISON WITH NAUTICAL CHARTS

Comparison has been made with Chart 874, scale 1:40,000, 2nd edition July 2, 1951, revised 23 March 1959 and corrected to 18 April 1959. The change at the west end of DAUPHIN ISLAND is also noted here.

ITEMS TO BE APPLIED TO NAUTICAL CHARTS IMMEDIATELY

None.

ITEMS TO BE CARRIED FORWARD

None.

R. E. Smith, Jr.
R. E. Smith, Jr.
Carto Photo Aid

APPROVED AND FORWARDED:

Arthur L. Wardwell
Arthur L. Wardwell
Tampa District Officer

49. NOTES FOR THE HYDROGRAPHER

One marked topographic station has been established:

SAND, 1958.

48. GEOGRAPHIC NAME LIST

ALABAMA

DAUPHIN ISLAND

GULF OF MEXICO

MISSISSIPPI SOUND

MOBILE COUNTY

Geographic names were taken from U.S.G.S. PETIT BOIS PASS
quadrangle.

Names approved
June 25, 1968, Wraight
A. Frank W. Pickers

1876.

50.

PHOTOGRAMMETRIC OFFICE REVIEW

T. 10770

1. Projection and grids IIS 2. Title IIS 3. Manuscript numbers IIS 4. Manuscript size IIS

4a. Classification label Unclassified

CONTROL STATIONS

5. Horizontal control stations of third-order or higher accuracy IIS 6. Recoverable horizontal stations of less than third-order accuracy (topographic stations) IIS 7. Photo hydro stations XX 8. Bench marks XX 9. Plotting of sextant fixes XX 10. Photogrammetric plot report MMS 11. Detail points IIS

ALONGSHORE AREAS

(Nautical Chart Data)

12. Shoreline IIS 13. Low-water line XX 14. Rocks, shoals, etc. XX 15. Bridges XX 16. Aids to navigation XX 17. Landmarks XX 18. Other alongshore physical features IIS 19. Other along-shore cultural features IIS

PHYSICAL FEATURES

20. Water features IIS 21. Natural ground cover IIS 22. Planetable contours XX 23. Stereoscopic instrument contours XX 24. Contours in general XX 25. Spot elevations XX 26. Other physical features IIS

CULTURAL FEATURES

27. Roads XX 28. Buildings XX 29. Railroads XX 30. Other cultural features IIS

BOUNDARIES

31. Boundary lines XX 32. Public land lines XX

MISCELLANEOUS

33. Geographic names IIS 34. Junctions IIS 35. Legibility of the manuscript IIS 36. Discrepancy overlay XX 37. Descriptive Report IIS 38. Field inspection photographs IIS 39. Forms IIS

40. I. I. Saperstein
Reviewer

Milton M. Slavney
Supervisor, Review Section of Unit

41. Remarks (see attached sheet)

FIELD COMPLETION ADDITIONS AND CORRECTIONS TO THE MANUSCRIPT

42. Additions and corrections furnished by the field completion survey have been applied to the manuscript. The manuscript is now complete except as noted under item 43.

P. E. Smith Jr.
Compiler

Milton M. Slavney
Supervisor

43. Remarks:

1978

Field Edit Report
(Shoreline)
Quadrangles T-10761, T-10770 and T-10771
Project PH-5704

51. Methods.

The shoreline was inspected by truck, skiff and walking along the beach. The distance to the MHWL was spot checked along the shoreline with reference to Photo Points, Topographic Stations and Triangulation Stations. Additions and corrections to the manuscript have been noted on the field-edit sheet in red and on the photographs in violet.

Field-edit information has been shown on ozalid prints T-10761, T-10770 and T-10771; on nine-lens photograph 56747 and infrared photograph 57L2500.

Photographs nine-lens 56741, 56742, 56743, 56744, 56745, 56746, 56748 and infrared 57L2499, 57L2501 are included for use during scribing and stickup of the maps after field edit.

52. Adequacy of compilation.

The map compilation appears complete and adequate.

53. Map accuracy.

The shoreline of the maps is accurate except for the changes since photography as shown on the field-edit sheet.

54. Recommendations.

There are no recommendations.

55. Examination of proof copy.

The following person is able to read a map of this area with assurance and has agreed to examine a proof copy of the map for possible errors: Byrd L. Moore, Fairhope, Alabama.

Submitted:
Michael L. Olivier
Michael L. Olivier
Ensign - C2GS
Photo Hydro Support Unit 720

REVIEW REPORT T-10770
PLANIMETRIC
February 1, 1968

61. GENERAL STATEMENT:

See Summary accompanying the Descriptive Report.

62. COMPARISON WITH REGISTERED TOPOGRAPHIC SURVEYS:

There was no registered topographic survey available for comparison purposes at the time of final review.

63. COMPARISON WITH MAPS OF OTHER AGENCIES:

Comparison was made with USGS PETIT BOIS PASS, ALA., 1:24,000 scale, 7 $\frac{1}{2}$ minute quadrangle, edition of 1958. The mean high water line of the two surveys are in agreement except in the vicinity of the west end of Dauphin Island.

A submerged wreck at latitude 30° 13' 29", longitude 88° 18' 14" is the only offshore feature on either of the surveys. This is approximately 90 meters west of the position on the chart and smooth sheet.

64. COMPARISON WITH CONTEMPORARY HYDROGRAPHIC SURVEYS:

Comparison was made with copies of smooth sheets H-8643, ECFP-10-11-61 and H-8647, ECFP-20-1-61. The mean high water line of the surveys are in good agreement. The submerged wreck on H-8647 at latitude 30° 13' 29", longitude 88° 18' 11" is not visible on photographs 56742, 57 L-2485 or 57 L-2486.

65. COMPARISON WITH NAUTICAL CHARTS:

Comparison was made with nautical chart 874-SC, 3rd edition, corrected thru NM 41-Oct. 14, 1967. The mean high water line at the west end of Dauphin Island is not in agreement between the two surveys. The shoreline of the chart has been revised from later photography than that used in the compilation of survey T-10770. See the last page of this report for the comparison.

66. ADEQUACY OF RESULTS AND FUTURE SURVEYS:

This survey complies with instructions and meets the National Standards of Map Accuracy.

Reviewed by:

Leo F. Beugnet
Leo F. Beugnet

Approved by:

For J. Bull, RADM, USESSA
Director, Atlantic Marine Center

Approved by:

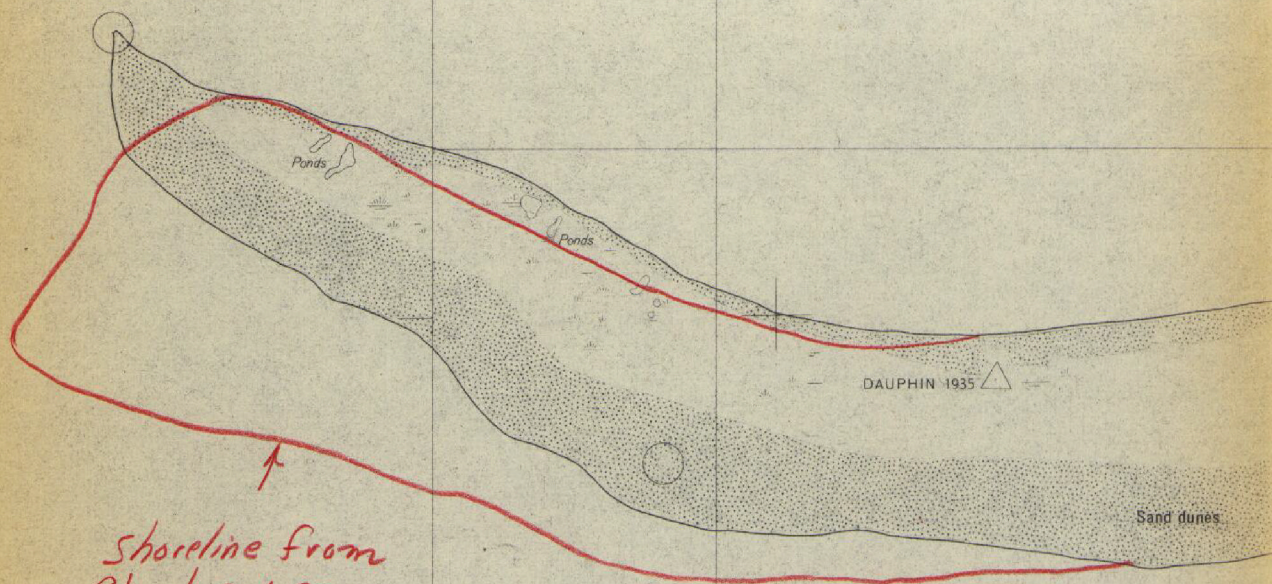
Charles L. Lerner
Chief, Photogrammetric Branch *ALB*

R. H. Howland
Chief, Photogrammetry Division

John A. Boyer
Chief, *Marine* Nautical Chart Division

14'30"

30°14'30"



Shoreline from
Chart 874-SC

13'30"

30°13'30"

88°18'30"

Wreck-chart 874-SC
not visible photos
572 2485-2486

PH-5704
Revision Data

RS- 887 (T- 10770)

This map was one of 18 project maps revised in 1962 with 1962 photography. Refer to project revision diagram on the following page.

Revision Survey information was not carried forward to the original shoreline surveys. The revised details have been applied to contemporary hydrographic surveys.

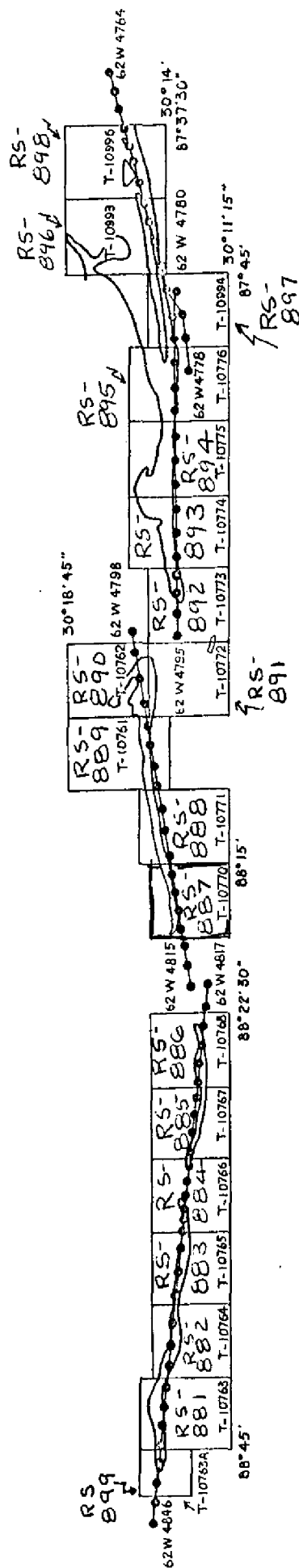
Copies of the revision surveys will be filed with other project (PH-5704) data in the Federal Records Center.

Compilation reports for some revision surveys are lost. Available reports are included in the Descriptive Reports for the registered shoreline surveys. 146

NO COMPILATION REPORT FOR RS-887 WAS FOUND

MOBILE BAY, ALABAMA - MISSISSIPPI SOUND, MISS.

SCALE - 1:10,000
SEPTEMBER, 1962



• 1:20,000 RC-8 (Pan.) Photographs. Photographs also 1:10,000 ratio prints for Hydro Support.