

10771

Original

10771

10771

FORM C&GS-504	
U.S. DEPARTMENT OF COMMERCE ENVIRONMENTAL SCIENCE SERVICES ADMINISTRATION COAST AND GEODETIC SURVEY	
DESCRIPTIVE REPORT	
Type of Survey	Planimetric
Field No.	Office No. T-10771
LOCALITY	
State	Alabama
General locality	Mobile County
Locality	Dauphin Island
19 ⁷ 58-60 *	
CHIEF OF PARTY Roger F. Lanier, Chief of Field Party Arthur L. Wardwell, Tampa District Office	
LIBRARY & ARCHIVES	
DATE	

USCOMM-DC 37022-P66

* REFER TO PAGE 6 OF THIS REPORT

DESCRIPTIVE REPORT - DATA RECORD

T-10771

Project No. (II): Ph-5704

Quadrangle Name (IV):

Field Office (II): Pascagoula Miss

Chief of Party: Roger F. Lanier

Photogrammetric Office (III): Tampa, Fla.

Officer-in-Charge: Arthur L. Wardwell

Instructions dated (II) (III): Field: 23 June 1958

Copy filed in Division of
Photogrammetry (IV)

Field: Supplement I - 10 Feb. 1959 & 6 Oct. 1959

Field: Supplement II - 17 Aug. 1959

Office: 7 April 1959

Office: Supplement I - 17 Aug. 1959

Field: Supplement III - 10 Nov. 1959

Method of Compilation (III): Graphic

29 Aug. 1962 (Supplement 4 Office)

Manuscript Scale (III): 1:10,000

Stereoscopic Plotting Instrument Scale (III): Inapplicable

Scale Factor (III): None

Date received in Washington Office (IV): 31 AUG 60

(FINAL APRIL 30, 1968)

Date reported to Nautical Chart Branch (IV):

Applied to Chart No.

Date:

Date registered (IV):

Publication Scale (IV):

Publication date (IV):

Geographic Datum (III): N.A. 1927

Vertical Datum (III): MHW

~~Mean sea level~~ except as follows:

Elevations shown as (25) refer to mean high water
Elevations shown as (5) refer to sounding datum
i.e., mean low water or mean lower low water

Reference Station (III): DAUPHIN ISLAND WEST BASE 1847

Lat.: 30°14'21.270" (654.9m)

Long.: 88°14'51.503" (1377.0m)

Adjusted
~~Unadjusted~~

Plane Coordinates (IV):

State:

Zone:

Y=

X=

Roman numerals indicate whether the item is to be entered by (II) Field Party, (III) Photogrammetric Office,
or (IV) Washington Office.

When entering names of personnel on this record give the surname and initials, not initials only.

DESCRIPTIVE REPORT - DATA RECORD

Field Inspection by (II): **W. M. Reynolds**

Date: **Aug. 1958**

Planetable contouring by (II): **Inapplicable**

Date:

Completion Surveys by (II): **M.L. Olivier**

Date: **March 1960**

Mean High Water Location (III) (State date and method of location): **Air Photo Compilation**
Date of Photography: 9 Nov. 1957 (see Item 35)

Projection and Grids ruled by (IV): **P.T.D. (W.C.)**

Date: **Oct. 1958**

Projection and Grids checked by (IV): **R. D. Shoup (W.C.)**

Date: **Mar. 1959**

Control plotted by (III): **R. R. Wagner**

Date: **May 1959**

Control checked by (III): **I. I. Saperstein**

Date: **May 1959**

Radial Plot ~~cost~~ **Stereoscopic**

Date: **Sept. 1959**

~~Photoreduction~~ by (III): **R. R. Wagner**

Planimetry

Date:

Stereoscopic Instrument compilation (III): **Inapplicable**

Contours

Date:

Manuscript delineated by (III): **I. I. Saperstein**

Date: **Sept. 1959**

~~Revision by~~ **J. T. Gerlach**

~~Sept. 1962~~

Photogrammetric Office Review ^{of compilation} by (III): **W. H. Shearouse**

Date: **Sept. 1959**

Elevations on Manuscript

Date:

checked by (II) (III): **Inapplicable**

DESCRIPTIVE REPORT - DATA RECORD

Camera (kind or source) (III): 9 Lens Camera and Wild "L"

3 4

PHOTOGRAPHS (III)

Number	Date	Time	Scale	Stage of Tide
56744	9 Nov. 1957	14:07	1:10,000	+ 0.2 *
56745	"	14:07	"	"
56746	"	14:08	"	"
57L 2490	"	14:07	"	"
57L 2491	"	14:07	"	"
57L 2492	"	14:08	"	"
25L 2493	"	14:08	"	"
25L 2494	"	14:08	"	"
62W 4806 - 4808	7 May 1962	15:00	"	1.6 above MLW

* Tide (III)

Reference Station:

Subordinate Station:

Subordinate Station:

Ratio of Ranges	Mean Range	Spring Range

FINAL
Washington Office Review by (IV): L.F. RUEBET

Date: FEB., 1968

Final Drafting by (IV): R.E. Smith

Date: July 1960

Final Drafting Review: I.I. Saperstein

July 1960

Drafting verified for reproduction by (IV):

Date:

Proof Edit by (IV):

Date:

Land Area (Sq. Statute Miles) (III): 2

Shoreline (More than 200 meters to opposite shore) (III): 8

~~Shoreline (Less than 200 meters to opposite shore) (III):~~

Control Leveling - Miles (II): Inapplicable

Number of Triangulation Stations searched for (II): 4**

Recovered: 3

Identified: 3

Number of BMs searched for (II): 0

Recovered:

Identified:

Number of Recoverable Photo Stations established (III): 1

Number of Temporary Photo Hydro Stations established (III): 0

Remarks: * Item 10 of "Instructions, planimetric mapping Project Ph-5704, Mobile Bay, Alabama - Field" dated 23 June 1958 states "the photography was taken with tide about 0.2 above MLW".

** Including 2 that were established by field party.

~~*** indicates revision photography~~

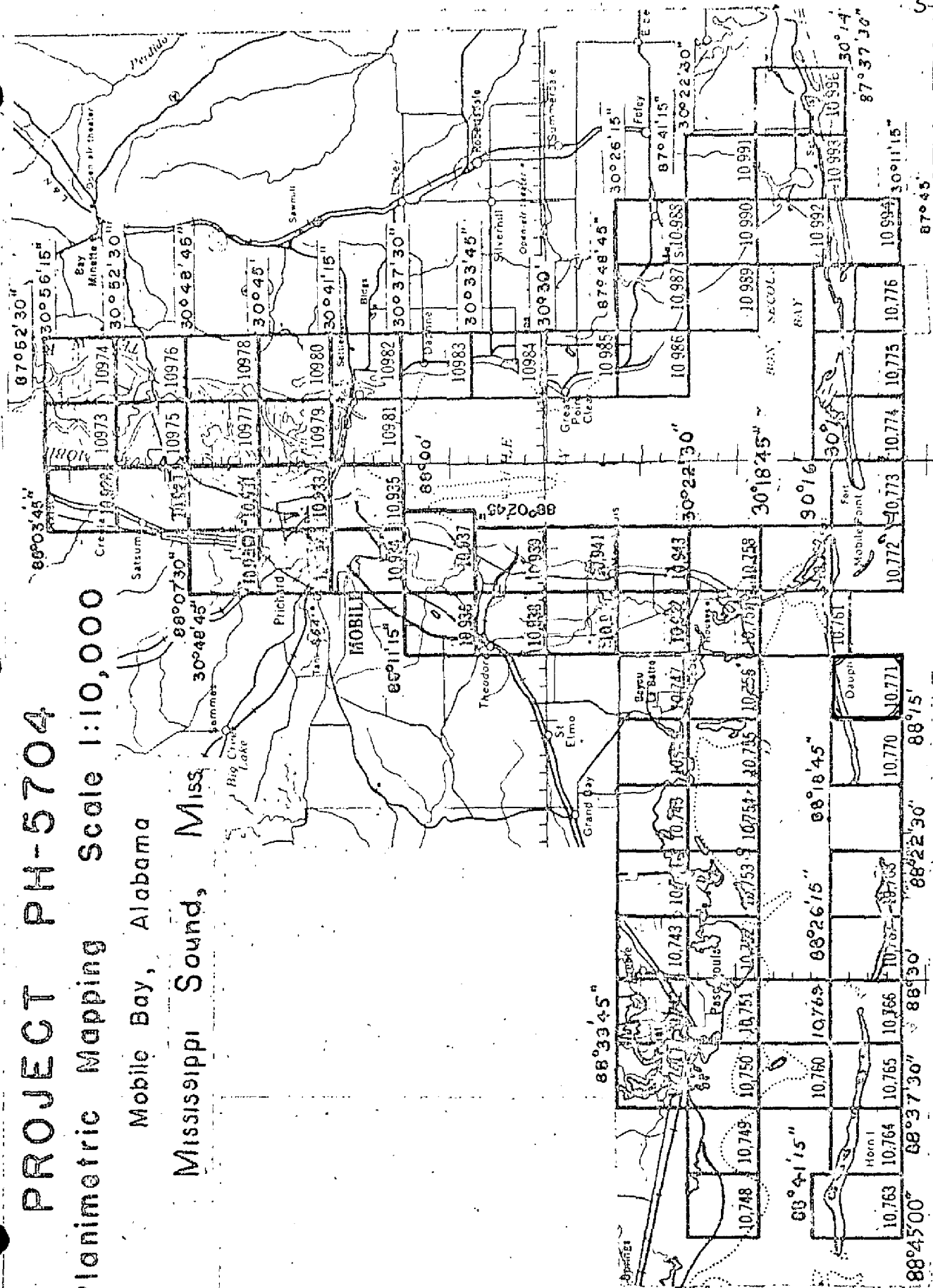
4

T-10771

COMPILATION RECORD	COMPLETION DATE	REMARKS
Compiled	September 1959	
Field Edit	March 1960	
Final Review	February 1968	

Planimetric Mapping Scale 1:10,000

Mississippi Sound, Miss.



SUMMARY TO ACCOMPANY
DESCRIPTIVE REPORT T-10771

Planimetric Survey T-10771 is one of seventy-four similar surveys in Project PH-5704. The primary purpose of the survey was to provide new shoreline for nautical charts and photo-hydro support data for hydrographic surveys in the same area. This survey covers a part of the shoreline of Dauphin Island. See page 5 of this report for the position of the survey within the project.

Field work preceding compilation consisted of recovery and/or establishment and identification of horizontal control, shoreline and field inspection, Geographic Names Investigation and Report on Boundaries.

Compilation was at 1:10,000 scale by graphic methods using the 1:10,000 scale nine-lens photographs of November 1957. Cronaflex copies of the manuscript along with ozalid prints and specially prepared photographs were furnished for preparation of the boat sheet, location of photo-hydro signals and for field edit use.

The manuscript was a vinylite sheet $4 \frac{1}{4}$ minutes in latitude by $3 \frac{3}{4}$ minutes in longitude, which was scribed and reproduced on cronaflex. One cronar positive and one cronar negative are provided for record and registry.

* THIS MAP WAS REVISED IN 1962. REFER TO PAGES 22, 23 AND 24 OF THIS DESCRIPTIVE REPORT.

FIELD INSPECTION REPORT
Map Numbers T-10761, 10762 and
T-10770 through T-10772
Project Ph-5704

2. Area] Field Inspection

These maps are located in southwestern Alabama. The land area is made up of Dauphin Island, Little Dauphin Island and the causeway connecting Dauphin Island to the mainland. The islands are low, sand dune covered beaches, except for the eastern part of Dauphin Island, which is covered with trees. The islands were inaccessible by automobile until 1955, when a causeway and bridge were completed. Extensive development is underway and numerous cottages, roads and bulkheads have been constructed. The area is primarily a summer resort and there are few permanent residents.

Fort Gaines, a fort used during the Civil War, is located in sheet T-10772. A radar station, which upon completion will be a part of the national network, is located along the northern limits of the same sheet.

Field inspection is believed complete as of 1 Sept. 1958. No items were deliberately left for field edit. However, with the development being incomplete, changes will probably be made throughout the above maps.

Photography was of fairly recent date and of good quality. No difficulty was encountered in their interpretation in the field. The tones range from white, in the sand areas, to grey, in the areas covered by light growth of grass, to black, in the areas covered with marsh and trees. Considerable time was spent in the field indicating the inshore limits of marsh. After driving part of the area with a jeep and walking the remainder, the marsh limits were generalized. The photographic tones between definite marsh and the wet sandy areas covered with thick growths of grass were not definite on the photographs or the ground.

The following nine-lens photographs were used for field inspection 56741 through 750, 56863 through 865. The following single lens photographs were used, 57 L 2485 through 2498 and 57 L 2501.

3. Horizontal Control

All Coast and Geodetic Survey control was searched for

and where recovered was identified to control the plot.

The following stations were established by triangulation or traverse methods:

T-10761

CEDAR 3, 1958

Mississippi Sound, Bayou Aloe Entrance Lt. 2, 1958
Intracoastal Waterway, Miss. Sound, Pass Aux Herons Range D Rear Light, 1958
Intracoastal Waterway, Miss. Sound, Pass Aux Herons Range D Front Light, 1958

Pond, 1958 (by traverse)

T-10762

Dauphin Island Water Tank, 1958
Mobile Bay, Pass Aux Herons, Leading Light B, 1958
Mobile Bay, Pass Aux Herons, Light 2, 1958
Mobile Bay, Pass Aux Herons, Light 18, 1958
Mobile Bay, Pass Aux Herons, Range A Front Light, 1958
Mobile Bay, Pass Aux Herons, Range A Rear Light, 1958

T-10770

Sand, 1958 (by traverse)
Intracoastal Waterway, Miss. Sound, Pass Aux Herons Light 82, 1958

T-10771

Land 1958

Isle 1958 (by traverse)
Intracoastal Waterway, Miss. Sound, Pass Aux Herons Range C Front Light, 1958
Intracoastal Waterway, Miss. Sound, Pass Aux Herons Range C Rear Light, 1958

T-10772

FORT GAINES (U.S.E.) 1958

No datum adjustments were made by the field party.

The following stations were reported lost;

T-10761

GILL, 1935
CEDAR 2, 1935
205-5 (Ala. Geod. Sur.), 1935
GULL, 1910
GRANT HOUSE SOUTH GABLE, 1910
GRANT (FLAG), 1910

T-10762

LITTLE DAUPHIN (U.S.E.), 1908
PINE, 1910
DRURY, 1910
DRURY 2, 1935

T-10770

WEST, 1910
HALF, 1935

T-10771

TAH, 1935

4. Vertical Control Inapplicable.
5. Contours and Drainage Contours are inapplicable.

Drainage is run-off into Mississippi Sound and The Gulf of Mexico.

6. Woodland Cover

Adequately covered by notes on the photographs.

7. Shoreline and Alongshore Features

The mean high water line and apparent shoreline were inspected by jeep, skiff, and walking along the beach. Appropriate notes and symbols have been indicated on the photographs. (Shoreline inspection data has been indicated on the following nine-lens photographs, 56741 through 56750 and 56863 through 56865).

There is little horizontal difference between the mean high and low water lines on Dauphin Island. The difference between the two lines could not be mapped at the project scale. The approximate low water line, around some small islands, has been indicated on photograph 56864.

There are no bluffs or cliffs.

All docks, piers, wharves and landings have been indicated on the photographs.

Shore ends of submarine cables have been indicated on the photographs. The cable from Cedar Point to Dauphin Island is no longer used but the cable is still in place. The cable now in use, crosses on poles west of the bridge, to the draw span, thence on the bridge towers across the channel.

The cable from Dauphin Island to Fort Morgan Coast Guard Station is still in use.

There are no other shoreline structures.

8. Offshore Features

The only offshore features are aids to navigation.

9. Landmarks and Aids

All landmarks for nautical charts have been indicated on the photographs. Form 567 will be submitted at a later date.

The only significant interior landmark is Fort Gaines in map T-10772.

There are no aeronautical aids in the area.

Fixed aids to navigation were located by one of the following methods:

- 1 Triangulation.
- 2 Theodolite cuts from identifiable photograph points.
- 3 Sextant fixes with check angles.

The daybeacons along a channel in Dauphin Island Bay, map T-10762, are privately maintained by Dauphin Island Marina Inc. These aids were numbered for the convenience of the observer only. Form 567 will be submitted at a later date.

10. Boundaries, monuments and Lines

See Special Report Boundaries Project Ph-5704, which will be submitted at a later date.

11. Other Control

The following recoverable topographic stations were established: Pond, 1958 (T-10761), Sand, 1958 (T-10770) and Isle, 1958 (T-10771). These stations were located by traverse from monumented triangulation stations. They were classified as recoverable topographic stations since a standardized tape was not used in the taping.

12. Other Interior Features

All roads and buildings were field inspected and have been indicated on the photographs.

Measurements for the bridge, along the causeway, to Dauphin Island were not required by the project instructions.

There are no airports or landing fields.

13. Geographic Names

See Special Report Geographic Names, Project Ph-5704, which will be submitted at a later date.

14. Special Reports and Supplemental Data

1. Special Report Boundaries, Project Ph-5704.
2. Special Report Geographic Names, Project Ph-5704.
3. Sketch Third-Order Triangulation, Project Ph-5704,
Bon Secour Bay to Dog Keys Pass.
4. Form 567, Project Ph-5704.

Submitted:

William M. Reynolds
William M. Reynolds

Approved:

Roger F. Lanier
Roger F. Lanier
LT, C&GS
Chief of Party

SCALE FACTOR

[illegible]

PHOTOGRAMMETRIC PLOT REPORT

21. AREA COVERED

Photogrammetric Plot No. 1 of Ph-5704 was for the entrance to Mobile Bay and all of Dauphin Island (manuscripts T-10757, T-10758, T-10761, T-10762, T-10770 through T-10772), and also eastward along a narrow peninsula between Bon Secour Bay and the Gulf of Mexico (manuscripts T-10773 through T-10776).

The sketch on page 14 * of this report shows the arrangement of manuscripts, the identified control, index of control, photograph centers and the adjoining manuscripts.

22. METHOD

Radial Plot:

Map manuscripts: -- The projections are 3'45" in latitude and longitude with the exceptions of T-10774 through T-10776 which are 4'45" in latitude. The western limit of T-10770 was extended to 88°19'. See letter (copy attached) to Chief, Photogrammetry Division, dated 17 September 1959. The northern limit of T-10771 was extended to 30°15'30" to accommodate detail in this area.

The plot was run on the joined manuscripts.

Photographs: -- The nine-lens photographs of 19 November 1957 at a scale of 1:10,000 were used to run the plot.

Contact single-lens infra red photographs were taken simultaneously with the nine-lens photographs with Camera "L" being used.

Only those single-lens photographs were located where it was believed they would aid the compiler in locating the photo-hydro stations. They were fixed in position by holding pass points located by the nine-lens photographs.

Templets: -- Vinylite templets were made from nine-lens photographs using master templet 53605 (1956-1957) for correction of transforming errors and paper distortion.

Closure and adjustment to control: -- The plot was run from east to west with conventional methods being used. Two Alabama Geodetic Survey control stations could not be held in the plot. See letter (copy attached) to Chief, Photogrammetry Division, dated 8 September 1959.

* DESCRIPTIVE REPORT - T-10757

23. ADEQUACY OF CONTROL

The control was adequate and all of it was positively identified. In the northern part of T-10758, it could not be determined which of two stations was in error, and MON LOUIS RM 2 1930 and JULIET R.M.A. 1910 were returned to the field for verification. It was found that JULIET R.M."A" actually had been destroyed at the time of the original identification and should not have been identified. (See 1959 recovery). A new substitute station was located for MON LOUIS and was held in the plot.

24. SUPPLEMENTAL DATA

None.

25. PHOTOGRAPHY

The nine-lens photographs gave adequate coverage, however the quality of the photographs was poor. Most of the photographs have a muddy appearance and on 56758 three fiducial marks were missing in the wing chambers. See attached letter dated 1 September 1959, Subject "Washboard Affect of nine-lens photographs".

None of the photographs were sufficiently tilted to justify special measures.

26. GENERAL

Dates of completion of the photogrammetric plot by maps are as follows:

T-10757	8 September 1959	T-10772	28 August 1959
T-10758	8 September 1959	T-10773	14 August 1959
T-10761	3 September 1959	T-10774	14 August 1959
T-10762	4 September 1959	T-10775	13 August 1959
T-10770	21 September 1959	T-10776	13 August 1959
T-10771	21 September 1959		

Respectfully submitted

Robert R. Wagner
Robert R. Wagner
Cartographer(Photo)

APPROVED & FORWARDED

William R. Koebel

for
Arthur L. Wardwell
Tampa District Officer

COMPILATION REPORT
T-10771

PHOTOGRAMMETRIC PLOT REPORT

Submitted with T-10757 this report.

31. DELINEATION

The graphic method was used. The field inspection was good and no difficulty was encountered in the interpretation of the photographs.

Two sets of photographs were used in the delineation (nine-lens and single-lens infra-red) although only the nine-lens photographs were used in the radial plot.

32. CONTROL

Reference Photogrammetric Plot Report.

33. SUPPLEMENTAL DATA

None.

34. CONTOURS AND DRAINAGE

None.

35. SHORELINE AND ALONGSHORE DETAILS

The shoreline inspection was adequate and no difficulty was encountered in the delineation. No low-water line is shown.

The shoreline has apparently built up slightly since photography, as evidenced by reference measurements from monumented stations, to the shoreline given in two places on the entire map. These put the shoreline seaward about 5 meters beyond the remainder of the shoreline and the measurements were ignored for consistency.

36. OFFSHORE DETAILS

None.

37. LANDMARKS AND AIDS

One non-floating aid has been shown and submitted on Form 567.

There are no landmarks. Forms 567 dated 15 July 1960 have been submitted to the Washington Office.

38. CONTROL FOR FUTURE SURVEYS

One topographic station has been established and Form 524 submitted. It has been listed under Item 49.

39. JUNCTIONS

Junction has been made with T-10761 to the east, T-10770 to the west. There are no contemporary surveys to the north and south.

40. HORIZONTAL AND VERTICAL ACCURACY

No statement.

46. COMPARISON WITH EXISTING MAPS

Comparison has been made with the U.S.G.S. HERON BAY and FORT MORGAN NW quadrangles scale 1:24,000 edition of 1958.

Comparison has been made with air photo compilation T-5537 1:10,000 edition of 1935.

The shoreline has eroded since the 1935 survey and there is a difference in the vegetation cover on the island between the above maps and the manuscript.

47. COMPARISON WITH NAUTICAL CHARTS

Comparison has been made with Chart 874 scale 1:40,000 edition of 2 July 1951, revised 23 March 1959.

The maps listed under Item 46 are probably the source of topography for the chart and the same differences exist.

ITEMS TO BE APPLIED TO NAUTICAL CHARTS IMMEDIATELY

None.

ITEMS TO BE CARRIED FORWARD

None.

I. I. Saperstein
I. I. Saperstein
Cartographer (photo)

Approved and Forwarded:

Arthur L. Wardwell
Arthur L. Wardwell
Chief of Party

48. GEOGRAPHIC NAME LIST

Names were taken from the U.S.G.S. HERON BAY and FORT MORGAN NW quadrangles.

- ALABAMA
- BIENVILLE BLVD
- DAUPHIN ISLAND
- GULF OF MEXICO
- MISSISSIPPI SOUND
- MOBILE COUNTY

Names approved
June 25, 1968
A. J. Wright
Frank W. Fickett

49. NOTES FOR THE HYDROGRAPHER

One (1) marked topographic station has been established:
ISLE, 1958.

18 XL

50.

PHOTOGRAMMETRIC OFFICE REVIEW

T-10771

1. Projection and grids I.I.S. 2. Title I.I.S. 3. Manuscript numbers I.I.S. 4. Manuscript size I.I.S.

4a Classification label Unclassified

CONTROL STATIONS

5. Horizontal control stations of third-order or higher accuracy I.I.S. 6. Recoverable horizontal stations of less than third-order accuracy (topographic stations) I.I.S. 7. Photo hydro stations XX 8. Bench marks XX 9. Plotting of sextant fixes XX 10. Photogrammetric plot report XX 11. Detail points I.I.S.

ALONGSHORE AREAS

(Nautical Chart Data)

12. Shoreline I.I.S. 13. Low-water line XX 14. Rocks, shoals, etc. XX 15. Bridges XX 16. Aids to navigation I.I.S. 17. Landmarks XX 18. Other alongshore physical features I.I.S. 19. Other along-shore cultural features I.I.S.

PHYSICAL FEATURES

20. Water features I.I.S. 21. Natural ground cover I.I.S. 22. Planetable contours XX 23. Stereoscopic instrument contours XX 24. Contours in general XX 25. Spot elevations XX 26. Other physical features I.I.S.

CULTURAL FEATURES

27. Roads I.I.S. 28. Buildings XX 29. Railroads XX 30. Other cultural features I.I.S.

BOUNDARIES

31. Boundary lines XX 32. Public land lines XX

MISCELLANEOUS

33. Geographic names I.I.S. 34. Junctions I.I.S. 35. Legibility of the manuscript I.I.S. 36. Discrepancy overlay XX 37. Descriptive Report I.I.S. 38. Field inspection photographs I.I.S. 39. Forms I.I.S.

40. Irving I. Saperstein Reviewer
Milton M. Slavney Supervisor, Review Section or Unit

Irving I. Saperstein

Milton M. Slavney

41. Remarks (see attached sheet)

FIELD COMPLETION ADDITIONS AND CORRECTIONS TO THE MANUSCRIPT

42. Additions and corrections furnished by the field completion survey have been applied to the manuscript. The manuscript is now complete except as noted under item 43.

Rayford E. Smith Jr. Compiler
M. M. Slavney Supervisor

43. Remarks:

1947

Field Edit Report
(Shoreline)
Quadrangles T-10761, T-10770 and T-10771
Project PH-5704

51. Methods.

The shoreline was inspected by truck, skiff and walking along the beach. The distance to the MHWL was spot checked along the shoreline with reference to Photo Points, Topographic Stations and Triangulation Stations. Additions and corrections to the manuscript have been noted on the field-edit sheet in red and on the photographs in violet.

Field-edit information has been shown on ozalid prints T-10761, T-10770 and T-10770; on nine-lens photograph 56747 and infrared photograph 57L2500.

Photographs nine-lens 56741, 56742, 56743, 56744, 56745, 56746, 56748 and infrared 57L2499, 57L2501 are included for use during scribing and stickup of the maps after field edit.

52. Adequacy of compilation.

The map compilation appears complete and adequate.

53. Map accuracy.

The shoreline of the maps is accurate except for the changes since photography as shown on the field-edit sheet.

54. Recommendations.

There are no recommendations.

55. Examination of proof copy.

The following person is able to read a map of this area with assurance and has agreed to examine a proof copy of the map for possible errors: Byrd L. Moore, Fairhope, Alabama.

Submitted:
Michael L. Olivier
Michael L. Olivier
Ensign - C&GS
Photo Hydro Support Unit 720

REVIEW REPORT T-10771
PLANIMETRIC
February 6, 1968

61. GENERAL STATEMENT:

See Summary accompanying the Descriptive Report.

62. COMPARISON WITH REGISTERED TOPOGRAPHIC SURVEYS:

Comparison was made with a copy of T-5537 compiled from photography of June 23, 1934. The shoreline of the outer coast has receded approximately 30 meters throughout the area of the survey. There are no along-shore or offshore features within these surveys that are in conflict.

Survey T-10771 supersedes the prior survey for nautical chart construction purposes.

63. COMPARISON WITH MAPS OF OTHER AGENCIES:

Comparison was made with U.S.G.S. FORT MORGAN NW, ALA., 1:24,000 scale, 7½ minute quadrangle, edition of 1958. The shoreline of the two surveys are in good agreement. It was noted that a small boat slip located at latitude 30° 15' 00", longitude 88° 11' 30" is not shown on the U.S.G.S. quadrangle.

64. COMPARISON WITH CONTEMPORARY HYDROGRAPHIC SURVEYS:

Comparison was made with a copy of smooth sheet H-8643, ECFP-10-11-61. The shoreline of the two surveys are identical and there are no conflicting offshore detail. A boat ramp at latitude 30° 15' 00", longitude 88° 11' 32" on the smooth sheet is not shown on survey T-10771.

65. COMPARISON WITH NAUTICAL CHARTS:

A comparison was made with chart 874-SC, 3rd edition, corrected thru NM 41-October 14, 1967. The mean high water line of the two surveys are in good agreement. There are no offshore or alongshore features on the surveys that are in conflict except for the boat ramp mentioned in Item 64 which does not appear on survey T-10771.

66. ADEQUACY OF RESULTS AND FUTURE SURVEYS:

This survey complies with instructions and meets the National Standards of Map Accuracy.

There is no comparison print with this report.

Photographs 57-L-2490 thru 2495 were examined during final review.

Reviewed by:

Leo F. Beugnet
Leo F. Beugnet

Approved by:

Fov J. Bull
J. Bull, RADM, USESSA
Director, Atlantic Marine Center

Approved by:

Charles L. Hume
Chief, Photogrammetric Branch *ASD*

R. W. Huetten
Chief, Photogrammetry Division

John D. Boyer
Chief, ~~Nautical~~ Chart Division
MARINE

22

PH-5704
Revision Data

RS-888 (T-1077/

This map was one of 18 project maps revised in 1962 with 1962 photography. Refer to project revision diagram on ~~the following page.~~ 24.

Revision Survey information was not carried forward to the original shoreline surveys. The revised details have been applied to contemporary hydrographic surveys.

Copies of the revision surveys will be filed with other project (PH-5704) data in the Federal Records Center.

Compilation reports for some revision surveys are lost. Available reports are included in the Descriptive Reports for the registered shoreline surveys. REFER TO PAGE 23.

JEB

REVISION COMPILATION
T-10771 (RS-888)
SEPTEMBER 1962

(See Descriptive Report T-10763 thru T-10768
for the revision compilation report covering this
survey).

* see below

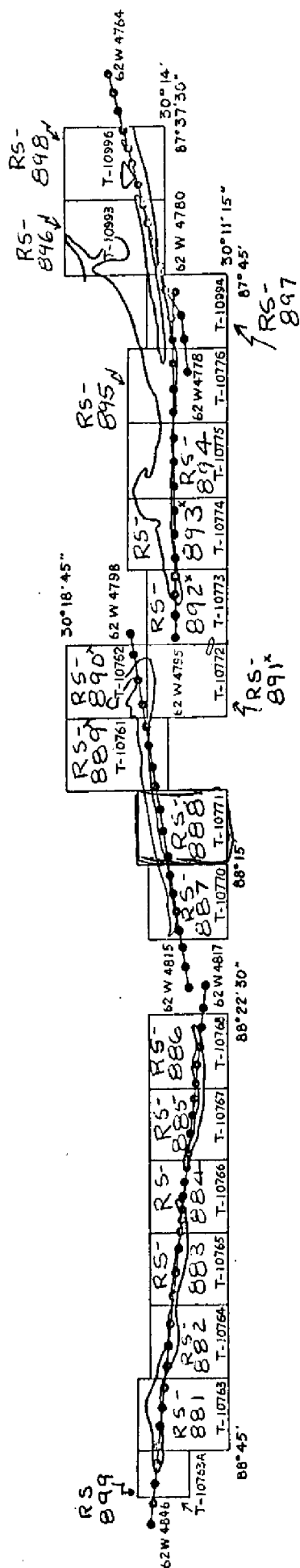
On the eastern extremity of this sheet there
are numerous buildings along the southern coast of
Dauphin Island. These houses were not shown. The
original compilation based on field inspection did
not compile these apparent summer cottages.

John T. Gerlach
John T. Gerlach

* REPORT NOT FOUND

MOBILE BAY, ALABAMA - MISSISSIPPI SOUND, MISS.

SCALE - 1:10,000
SEPTEMBER, 1962



- 1:20,000 RC-8 (Pan.) photographs. Photographs also 1:10,000 ratio prints for Hydro Support.