

10772

Original

FORM C&GS-504	
U.S. DEPARTMENT OF COMMERCE ENVIRONMENTAL SCIENCE SERVICES ADMINISTRATION COAST AND GEODETIC SURVEY	
DESCRIPTIVE REPORT	
Type of Survey	Planimetric
Field No.	Office No. T-10772
LOCALITY	
State	Alabama
General locality	Mobile County
Locality	Fort Gaines
1958-60 *	
CHIEF OF PARTY Roger F. Lanier, Chief of Field Party Arthur L. Wardwell, Tampa District Office	
LIBRARY & ARCHIVES	
DATE	

* REFER TO PAGE 6 OF THIS REPORT

USCOMM-DC 37022-P66

DESCRIPTIVE REPORT - DATA RECORD

T - 10772

Project No. (II): Ph-5704

Quadrangle Name (IV):

Field Office (II): Pascagoula, Miss.

Chief of Party: Roger F. Lanier

Photogrammetric Office (III): Tampa, Florida

Officer-in-Charge: Arthur L. Wardwell

Instructions dated (II) (III): (II) 23 June 1958 (Field)
10 Feb. 1959 (Field Suppl. 1)

Copy filed in Division of
Photogrammetry (IV)

(III) 7 April 1959 (Office)
17 Aug. 1959 (Office Suppl. 1)
17 Aug. 1959 (Field Suppl. 2)

(III) 9 Sept. 1959 (Stereo Bridging)
6 Oct. 1959 (Office Suppl. 1)
10 Nov. 1959 (Field & Office Suppl. 3)
~~29 Aug. 1962 (Office Suppl. 4)~~

Method of Compilation (III): Graphic

Manuscript Scale (III): 1:10,000

Stereoscopic Plotting Instrument Scale (III): Inapplicable

Scale Factor (III): None

Date received in Washington Office (IV): 31 AUG 60
Date reported to Nautical Chart Branch (IV):
Final - April 15, 1968

Applied to Chart No.

Date:

Date registered (IV):

Publication Scale (IV):

Publication date (IV):

Geographic Datum (III): N. A. 1927

Vertical Datum (III):

Mean sea level except as follows: MHW
Elevations shown as (25) refer to mean high water
Elevations shown as (6) refer to sounding datum
i.e., mean low water or mean lower low water

Reference Station (III): FORT GAINES (USE) 1958

Lat.: 30° 14' 52.306" (1610.6 m.) Long.: 88° 04' 29.328" (784.1 m.)

~~XXXXXXXX~~
Unadjusted

Plane Coordinates (IV):

State:

Zone:

Y=

X=

Roman numerals indicate whether the item is to be entered by (II) Field Party, (III) Photogrammetric Office,
or (IV) Washington Office.

When entering names of personnel on this record give the surname and initials, not initials only.

DESCRIPTIVE REPORT - DATA RECORD

Field Inspection by (II): Mathew A. Stewart

Date: August 1958

Planetable contouring by (II): Inapplicable

Date:

Completion Surveys by (II): M.L.Olivier

Date: March 1960

Mean High Water Location (III) (State date and method of location):

August 1958

Air Photo Compilation

Projection and Grids ruled by (IV): P. Dempsey (W. O.)

Date: Oct. 1958

Projection and Grids checked by (IV): R. D. Shoup (W. O.)

Date: Mar. 1959

Control plotted by (III): R. J. Pate

Date: Apr. 1959

Control checked by (III): R. R. Wagner

Date: Apr. 1959

Radial Plot or Stereoscopic

Control-extension by (III): R. R. Wagner

Date: Aug. 1959

Planimetry

Stereoscopic Instrument compilation (III):

Inapplicable

Contours

Date:

Date:

Manuscript delineated by (III):

W. W. Dawsey

Revision by

J. T. Gertach

Date: Sept. 1959
Oct. 1962

of compilation

Photogrammetric Office Review by (III): W. H. Shearouse

Date: Sept. 1959

Elevations on Manuscript
checked by (II) (III):

Inapplicable

Date:

DESCRIPTIVE REPORT - DATA RECORD

3 *

Camera (kind or source) (III): **Nine-lens C&GS**

PHOTOGRAPHS (III)

Number	Date	Time	Scale	Stage of Tide
56758	9 Nov. 1957	1429	1:10,000	+0.2 *
56759	9 Nov. 1957	1429	"	"
56866	19 Nov. 1957	1534	"	"
56867	19 Nov. 1957	1534	"	"
62 W 4799	7 May 1962	1510	1:10,000	1.5 above MLW
thru				
62 W 4801				

Tide (III)
See * below

Reference Station:
Subordinate Station:
Subordinate Station:

Ratio of Ranges	Mean Range	Spring Range

Washington Office Review by (IV): *Leo F. Beugnot, Atlantic Marine Center* Date: *Feb. 1968*

Final Drafting by (IV): **R.E. Smith** Date: **June 1960**
Final Drafting Review: **I.I. Saperstein** Date: **July 1960**
Drafting verified for reproduction by (IV): Date:

Proof Edit by (IV): Date:

Land Area (Sq. Statute Miles) (III):
Shoreline (More than 200 meters to opposite shore) (III):
Shoreline (Less than 200 meters to opposite shore) (III):
Control Leveling - Miles (II): **None**
Number of Triangulation Stations searched for (II): **0**
Number of BMs searched for (II): **None**
Number of Recoverable Photo Stations established (III): **None**
Number of Temporary Photo Hydro Stations established (III): **1*****

Recovered: **0** Identified: **1****
Recovered: Identified:

Remarks:

- * From Item 10 of Project Instructions (Field) which states: "The photography was taken with the tide about 0.2 ft. above MLW".
- ** One third-order triangulation station established. A second triangulation station was established by the hydro-party DAUPHIN ISLAND USAF RADAR DOME (Eof2)
- *** "BOW OF WRECK, 1958". No form 524 submitted. *destroyed* 1960

4 X

T-10772

COMPILATION RECORD

COMPLETION DATE

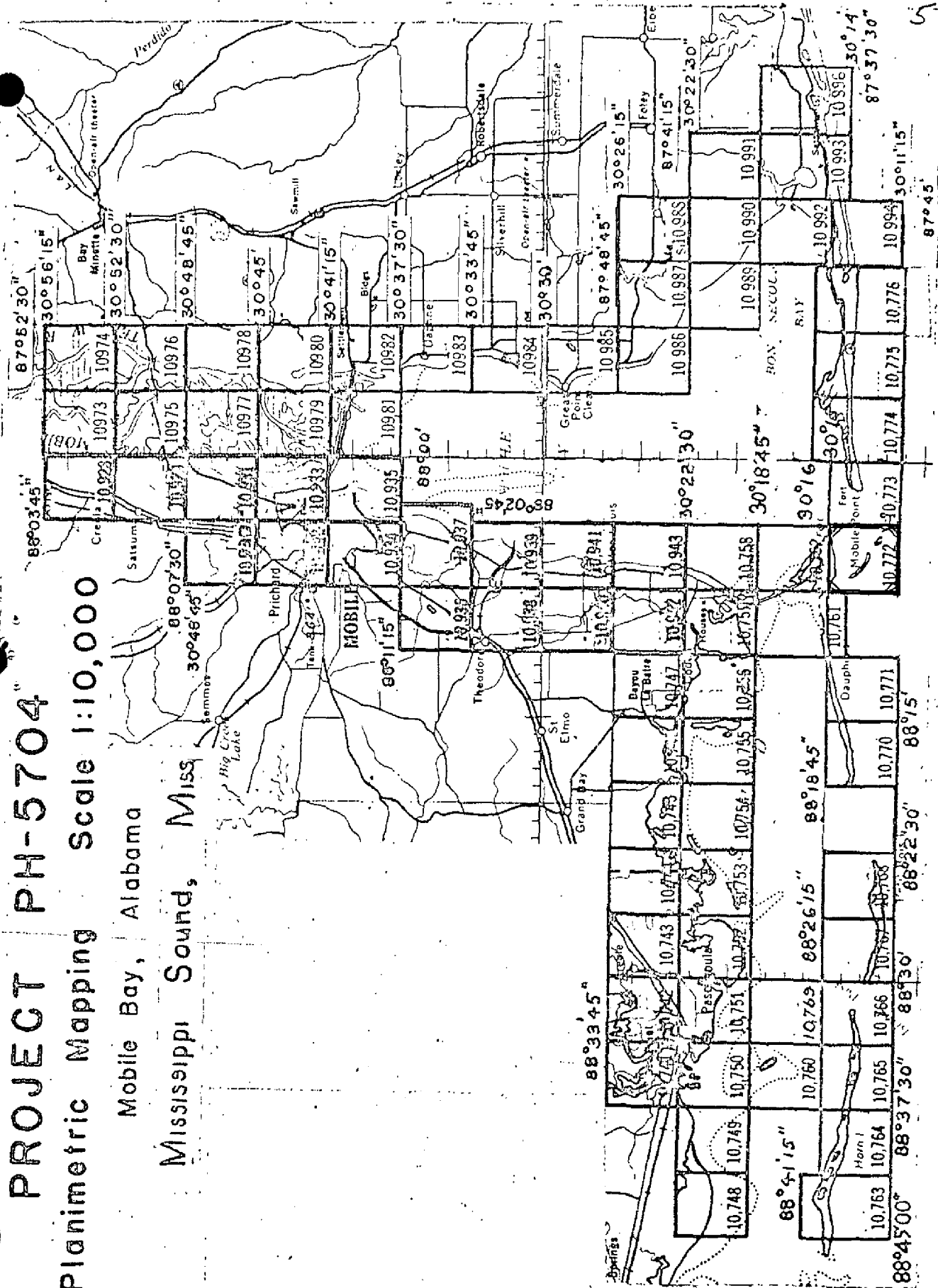
REMARKS

Compiled	September 1959	
Field Edit	March 1960	
Final Review	February 1968	

Planimetric Mapping
Scale 1:10,000

Mobile Bay, Alabama

Mississippi Sound, Miss



6

SUMMARY TO ACCOMPANY
DESCRIPTIVE REPORT T-10772

Planimetric Survey T-10772 is one of seventy-four similar surveys in Project PH-5704. It covers a part of the shoreline of Dauphin Island and Sand Island in the area of Pelican Bay. The primary purpose of the survey was to provide new shoreline for nautical charts and photo-hydro support data for hydrographic surveys in the area.

Field work preceding compilation consisted of recovery and identification of horizontal control, shoreline and field inspection, Investigation of Geographic Names and Report on Boundaries.

Compilation was at 1:10,000 scale by graphic methods using the 9-lens photography of November 1957. Cronaflex copies of the manuscript along with ozalids and specially prepared photographs were furnished for preparation of the boat sheet, location of hydro signals and field edit use.

The manuscript was a vinylite sheet 3 minutes 45 seconds in latitude by 3 minutes 45 seconds in longitude which was scribed and reproduced on cronaflex. One cronaflex positive and one cronar negative are provided for record and registry.

* THIS MAP WAS REVISED IN 1962. Refer to pages 21 through 27 of this report.

FIELD INSPECTION REPORT
Map Numbers T-10761, 10762 and
T-10770 through T-10772
Project Ph-5704

2. Areal Field Inspection

These maps are located in southwestern Alabama. The land area is made up of Dauphin Island, Little Dauphin Island and the causeway connecting Dauphin Island to the mainland. The islands are low, sand dune covered beaches, except for the eastern part of Dauphin Island, which is covered with trees. The islands were inaccessible by automobile until 1955, when a causeway and bridge were completed. Extensive development is underway and numerous cottages, roads and bulkheads have been constructed. The area is primarily a summer resort and there are few permanent residents.

Fort Gaines, a fort used during the Civil War, is located in sheet T-10772. A radar station, which upon completion will be a part of the national network, is located along the northern limits of the same sheet.

Field inspection is believed complete as of 1 Sept. 1958. No items were deliberately left for field edit. However, with the development being incomplete, changes will probably be made throughout the above maps.

Photography was of fairly recent date and of good quality. No difficulty was encountered in their interpretation in the field. The tones range from white, in the sand areas, to grey, in the areas covered by light growth of grass, to black, in the areas covered with marsh and trees. Considerable time was spent in the field indicating the inshore limits of marsh. After driving part of the area with a jeep and walking the remainder, the marsh limits were generalized. The photographic tones between definite marsh and the wet sandy areas covered with thick growths of grass were not definite on the photographs or the ground.

The following nine-lens photographs were used for field inspection 56741 through 750, 56863 through 865. The following single lens photographs were used, 57 L 2485 through 2498 and 57 L 2501.

3. Horizontal Control

All Coast and Geodetic Survey control was searched for

and where recovered was identified to control the plot.

The following stations were established by triangulation or traverse methods:

T-10761

CEDAR 3, 1958

Mississippi Sound, Bayou Aloe Entrance Lt. 2, 1958
Intracoastal Waterway, Miss. Sound, Pass Aux Herons Range D Rear Light, 1958
Intracoastal Waterway, Miss. Sound, Pass Aux Herons Range D Front Light, 1958

Pond, 1958 (by traverse)

T-10762

Dauphin Island Water Tank, 1958
Mobile Bay, Pass Aux Herons, Leading Light B, 1958
Mobile Bay, Pass Aux Herons, Light 2, 1958
Mobile Bay, Pass Aux Herons, Light 18, 1958
Mobile Bay, Pass Aux Herons, Range A Front Light, 1958
Mobile Bay, Pass Aux Herons, Range A Rear Light, 1958

T-10770

Sand, 1958 (by traverse)

Intracoastal Waterway, Miss. Sound, Pass Aux Herons Light 82, 1958

T-10771

Land 1958

Isle 1958 (by traverse)

Intracoastal Waterway, Miss. Sound, Pass Aux Herons Range C Front Light, 1958
Intracoastal Waterway, Miss. Sound, Pass Aux Herons Range C Rear Light, 1958

T-10772

FORT GAINES (U.S.E.) 1958

No datum adjustments were made by the field party.

The following stations were reported lost;

T-10761

GILL, 1935
CEDAR 2, 1935
205-5 (Ala. Geod. Sur.), 1935
GULL, 1910
GRANT HOUSE SOUTH GABLE, 1910
GRANT (FLAG), 1910

T-10762

LITTLE DAUPHIN (U.S.E.), 1908
PINE, 1910
DRURY, 1910
DRURY 2, 1935

T-10770

WEST, 1910
HALF, 1935

T-10771

TAM, 1935

4. Vertical Control Inapplicable.

5. Contours and Drainage Contours are inapplicable.

Drainage is run-off into Mississippi Sound and The Gulf of Mexico.

6. Woodland Cover

Adequately covered by notes on the photographs.

7. Shoreline and Alongshore Features

The mean high water line and apparent shoreline were inspected by jeep, skiff, and walking along the beach. Appropriate notes and symbols have been indicated on the photographs. (Shoreline inspection data has been indicated on the following nine-lens photographs, 56741 through 56750 and 56863 through 56865).

There is little horizontal difference between the mean high and low water lines on Dauphin Island. The difference between the two lines could not be mapped at the project scale. The approximate low water line, around some small islands, has been indicated on photograph 56864.

There are no bluffs or cliffs.

All docks, piers, wharves and landings have been indicated on the photographs.

Shore ends of submarine cables have been indicated on the photographs. The cable from Cedar Point to Dauphin Island is no longer used but the cable is still in place. The cable now in use, crosses on poles west of the bridge, to the draw span, thence on the bridge towers across the channel.

The cable from Dauphin Island to Fort Morgan Coast Guard Station is still in use.

There are no other shoreline structures.

8. Offshore Features

The only offshore features are aids to navigation.

9. Landmarks and Aids

All landmarks for nautical charts have been indicated on the photographs. Form 567 will be submitted at a later date.

The only significant interior landmark is Fort Gaines in map T-10772.

There are no aeronautical aids in the area.

Fixed aids to navigation were located by one of the following methods:

- 1 Triangulation.
- 2 Theodolite cuts from identifiable photograph points.
- 3 Sextant fixes with check angles.

The daybeacons along a channel in Dauphin Island Bay, map T-10762, are privately maintained by Dauphin Island Marina Inc. These aids were numbered for the convenience of the observer only. Form 567 will be submitted at a later date.

10. Boundaries, monuments and Lines

See Special Report Boundaries Project Ph-5704, which will be submitted at a later date.

11. Other Control

The following recoverable topographic stations were established: Pond, 1958 (T-10761), Sand, 1958 (T-10770) and Isle, 1958 (T-10771). These stations were located by traverse from monumented triangulation stations. They were classified as recoverable topographic stations since a standardized tape was not used in the taping.

12. Other Interior Features

All roads and buildings were field inspected and have been indicated on the photographs.

Measurements for the bridge, along the causeway, to Dauphin Island were not required by the project instructions.

There are no airports or landing fields.

13. Geographic Names

See Special Report Geographic Names, Project Ph-5704, which will be submitted at a later date.

14. Special Reports and Supplemental Data

1. Special Report Boundaries, Project Ph-5704.
2. Special Report Geographic Names, Project Ph-5704.
3. Sketch Third-Order Triangulation, Project Ph-5704,
Bon Secour Bay to Dog Keys Pass.
4. Form 567, Project Ph-5704.

Submitted:

William M. Reynolds
William M. Reynolds

Approved:

Roger F. Lanier
Roger F. Lanier
LT, C&GS
Chief of Party

PHOTOGRAMMETRIC PLOT REPORT21. AREA COVERED

Photogrammetric Plot No. 1 of Ph-5704 was for the entrance to Mobile Bay and all of Dauphin Island (manuscripts T-10757, T-10758, T-10761, T-10762, T-10770 through T-10772), and also eastward along a narrow peninsula between Bon Secour Bay and the Gulf of Mexico (manuscripts T-10773 through T-10776).

The sketch on page 14* of this report shows the arrangement of manuscripts, the identified control, index of control, photograph centers and the adjoining manuscripts.

22. METHODRadial Plot:

Map manuscripts: -- The projections are 3'45" in latitude and longitude with the exceptions of T-10774 through T-10776 which are 4'45" in latitude. The western limit of T-10770 was extended to 88°19'. See letter (copy attached) to Chief, Photogrammetry Division, dated 17 September 1959. The northern limit of T-10771 was extended to 30°15'30" to accommodate detail in this area.

The plot was run on the joined manuscripts.

Photographs: -- The nine-lens photographs of 19 November 1957 at a scale of 1:10,000 were used to run the plot.

Contact single-lens infra red photographs were taken simultaneously with the nine-lens photographs with Camera "L" being used.

Only those single-lens photographs were located where it was believed they would aid the compiler in locating the photo-hydro stations. They were fixed in position by holding pass points located by the nine-lens photographs.

Templets: -- Vinylite templets were made from nine-lens photographs using master templet 53605 (1956-1957) for correction of transforming errors and paper distortion.

Closure and adjustment to control: -- The plot was run from east to west with conventional methods being used. Two Alabama Geodetic Survey control stations could not be held in the plot. See letter (copy attached) to Chief, Photogrammetry Division, dated 8 September 1959.

* DESCRIPTIVE REPORT FOR T-10757

23. ADEQUACY OF CONTROL

The control was adequate and all of it was positively identified. In the northern part of T-10758, it could not be determined which of two stations was in error, and MON LOUIS RM 2 1930 and JULIET R.M.A. 1910 were returned to the field for verification. It was found that JULIET R.M."A" actually had been destroyed at the time of the original identification and should not have been identified. (See 1959 recovery). A new substitute station was located for MON LOUIS and was held in the plot.

24. SUPPLEMENTAL DATA

None.

25. PHOTOGRAPHY

The nine-lens photographs gave adequate coverage, however the quality of the photographs was poor. Most of the photographs have a muddy appearance and on 56758 three fiducial marks were missing in the wing chambers. See attached letter dated 1 September 1959, Subject "Washboard Affect of nine-lens photographs".

None of the photographs were sufficiently tilted to justify special measures.

26. GENERAL

Dates of completion of the photogrammetric plot by maps are as follows:

T-10757	8 September 1959	T-10772	28 August 1959
T-10758	8 September 1959	T-10773	14 August 1959
T-10761	3 September 1959	T-10774	14 August 1959
T-10762	4 September 1959	T-10775	13 August 1959
T-10770	21 September 1959	T-10776	13 August 1959
T-10771	21 September 1959		

Respectfully submitted

Robert R. Wagner
Robert R. Wagner
Cartographer(Photo)

APPROVED & FORWARDED

William R. Koebel
for Arthur L. Wardwell
Tampa District Officer

COMPILATION REPORT T-10772

PHOTOGRAMMETRIC PLOT REPORT

Submitted with T-10757 *this Descriptive Report*

31. DELINEATION

The graphic method was used. The field inspection was adequate.

32. CONTROL

Reference Photogrammetric Plot Report.

33. SUPPLEMENTAL DATA

None. *See item 51*

34. CONTOURS AND DRAINAGE

Contours are not applicable.

No problems were encountered in the delineation of drainage.

35. SHORELINE AND ALONGSHORE DETAILS

The shoreline, alongshore details and low-water line were delineated in accordance with the field inspector's notes. The shoreline inspection was adequate.

36. OFFSHORE DETAILS

None.

37. LANDMARKS AND AIDS

There are no landmarks.

One aid to navigation was located. ~~Form 567 is submitted with this report.~~ *Forms 567 dated 15 July 1960 submitted to the Washington Office*

38. CONTROL FOR FUTURE SURVEYS

One topographic station was established. It is "BOW OF WRECK, 1958", an unmarked object for which a Form 524 has not been submitted. It is listed under Item 49. *Destroyed*.

39. JUNCTIONS

Junctions have been made with the following:

T-10762 to the north

T-10773 to the east

T-10761 to the west

There is no contemporary survey to the south.

40; HORIZONTAL AND VERTICAL ACCURACY

No statement.

46. COMPARISON WITH EXISTING MAPS

Comparison has been made with U.S.G.S. FORT MORGAN, ALA. quadrangle scale 1:24,000 edition of 1958.

Comparison has also been made with air photo compilations T-5536 and T-5537 1:10,000 dated 1934.

The quadrangle compares favorably with the manuscript except that Sand Island has changed its shape and Pelican Island has disappeared.

47. COMPARISON WITH NAUTICAL CHARTS

Comparison has been made with Chart 873 scale 1:40,000 revised to 23 March 1959.

The maps listed under Item 46 are probably the source of topography for the chart and the same differences apply.

ITEMS TO BE APPLIED TO NAUTICAL CHARTS IMMEDIATELY

None.

ITEMS TO BE CARRIED FORWARD

None.

Webber W. Dawsey
Webber W. Dawsey
Cartographer (Photo)

APPROVED & FORWARDED

Arthur L. Wardwell
Arthur L. Wardwell
Chief of Party

48. GEOGRAPHIC NAME LIST

The names shown on the manuscript were taken from the FORT MORGAN quadrangle and Chart 873. Wherever a name was in conflict between sources, the quadrangle name was used.

Names in conflict and sources are as follows:

ALLIGATOR LAKE: FORT MORGAN quadrangle

ALLIGATOR POND: Chart 873

PELICAN POINT: FORT MORGAN quadrangle

EAST POINT: T-5536

East Point is shown north of Pelican Point (a new name) on the quadrangle.

Gulfside Golf Course was taken from the Corps of Engineers Project map listed under Item 51.

ALABAMA

ALLIGATOR *Lake - 70 ft*

BROOKLEY AIR FORCE BASE AIR-SEA RESCUE STATION

DAUPHIN ISLAND

DAUPHIN ISLAND (VILLAGE)

EAST POINT

FORT GAINES

GULF OF MEXICO

MOBILE BAY

MOBILE COUNTY

OLEANDER POND

PELICAN BAY

PELICAN PASSAGE

PELICAN POINT

SAND ISLAND

SAND ISLAND CHANNEL

*Names approved
June 26, 1968
Frank W. Fickett
A. J. Wright*

50.

PHOTOGRAMMETRIC OFFICE REVIEW

T-10772

1. Projection and grids I.I.S. 2. Title I.I.S. 3. Manuscript numbers I.I.S. 4. Manuscript size I.I.S.

4a Classification label Unclassified

CONTROL STATIONS

5. Horizontal control stations of third-order or higher accuracy I.I.S. 6. Recoverable horizontal stations of less than third-order accuracy (topographic stations) XX 7. Photo hydro stations XX 8. Bench marks XX 9. Plotting of sextant fixes XX 10. Photogrammetric plot report I.I.S. 11. Detail points I.I.S.

ALONGSHORE AREAS

(Nautical Chart Data)

12. Shoreline I.I.S. 13. Low-water line XX 14. Rocks, shoals, etc. XX 15. Bridges XX 16. Aids to navigation I.I.S. 17. Landmarks XX 18. Other alongshore physical features I.I.S. 19. Other along-shore cultural features I.I.S.

PHYSICAL FEATURES

20. Water features I.I.S. 21. Natural ground cover I.I.S. 22. Planetable contours XX 23. Stereoscopic instrument contours XX 24. Contours in general XX 25. Spot elevations XX 26. Other physical features I.I.S.

CULTURAL FEATURES

27. Roads I.I.S. 28. Buildings I.I.S. 29. Railroads XX 30. Other cultural features I.I.S.

BOUNDARIES

31. Boundary lines I.I.S. 32. Public land lines XX

MISCELLANEOUS

33. Geographic names I.I.S. 34. Junctions I.I.S. 35. Legibility of the manuscript I.I.S. 36. Discrepancy overlay XX 37. Descriptive Report I.I.S. 38. Field inspection photographs I.I.S. 39. Forms I.I.S.

40. Irving I. Saperstein
Reviewer

Milton M. Slavney
Supervisor, Review Section of Unit

41. Remarks (see attached sheet)
Irving I. Saperstein

Milton M Slavney

FIELD COMPLETION ADDITIONS AND CORRECTIONS TO THE MANUSCRIPT

42. Additions and corrections furnished by the field completion survey have been applied to the manuscript. The manuscript is now complete except as noted under item 43.

Rayford E. Smith Jr.
Compiler

M. M. Slavney
Supervisor

43. Remarks:

Field Edit Report
(Shoreline)
Quadrangles T-10772 and T-10762
Project PH-5704

51. Methods.

The distance to the MHWL was spot checked along the shoreline. Additions and corrections to the manuscript have been noted on the field-edit sheet in red and on the photographs in violet.

A topographic sheet (tin-sheet) has been constructed to cover the changes in the vicinity of Dauphin Island. A sketch or overlay of the topographic sheet is included showing shoreline changes and new channel around Pass Drury. PASS AUX HERONS LT. 18, 1958 was moved since photography and a new location was obtained for hydrographic purposes. The location is shown on the field-edit sheet. Pelican Bay Daybeacon was relocated with the use of the topographic sheet--see (52. Adequacy of compilation).

The topographic sheet is being retained by the East Coast Field Party. Any new additions or changes will be edited on this sheet and this sheet will become part of the hydrographic records.

Field-edit information has been shown on field-edit sheets T-10773 and T-10776 and infrared photograph 9Nov. 57L2502.

Two project maps of the U.S. Army Engineers is being included in this report showing the marked boundaries of Fort Gaines and The boundaries of Dauphin Island Annex to Brookley Air Force Base.

52. Adequacy of compilation.

The map compilation appears complete and adequate except for the following remarks: Corrections of the tree line as shown on photograph 57L2502. (The nine-lens photograph of this area is being kept for photo-hydro support.) Correction in the location of Pelican Bay Daybeacon. It was noticed that L.F.B.'s horizontal direction (60-14-12) from photo-pt. 72-01 does not satisfy the location of the daybeacon as shown on Cronflex Positive T-10772. A new location was

obtained by plane-table methods. The theodolite cut taken in 1958 checks the new location of the daybeacon. It is believed that the daybeacon has not been moved since photography. See field-edit sheet for location.

See field-edit sheet T-10762 for lettering of longitude.

53. Map accuracy.

The shoreline of the maps is accurate except for the changes since photography as shown on the field-edit sheet.

54. Recommendations.

There are no recommendations

55. Examination of proof copy.

The following person is able to read a map of this area with assurance and has agreed to examine a proof copy of the map for possible errors: Eyrd L. Moore, 36 N. Section Street, Fairhope, Alabama.

Geographic names:

BIG PASS MARGARET-Two people in the Dauphin Island area were contacted on this matter. Both claimed that the proper name for this pass should be WOODS BAYOU. Their names, years a residence and addresses are as such: S.S. Mallon, 49 years, Dauphin Island, Alabama and Pete Patronas, 38 years, Dauphin Island, Alabama. Both of these men also claim that BAYOU MATAGUA should be called SPRING BAYOU. It should be noticed that neither of these passes are open.

BROOKLAY AFB RECREATION FACILITIES-The first word of this name is spelled wrong. BROOKLAY should be spelled BROOKLEY. This military base is an annex to Brookley Air Force Base. It has recreational facilities for the Air Force personnel. It is an Air Sea Rescue Station. See enclosed U.S. Army Engineer's Project Map.

Boundaries:

For the marked boundaries of Ft. Gaines and the boundaries of the Air Force Base on Dauphin Island see enclosed U.S. Army Engineer's Project Map.

Submitted:

Michael L. Olivier
Michael L. Olivier

Ensign - C2GS

Photo Hydro Support Unit 720

MARCH 1960

TAMPA
WHS

21

REVIEW REPORT T-10772
PLANIMETRIC
February 26, 1968

61. GENERAL STATEMENT:

See Summary accompanying the Descriptive Report.

In September 1962 this survey was revised by the resection of 1962 photography. The Revision Compilation Report contained the statement that the original compilation proved to be in error in the vicinity of Fort Gaines and this area was re-compiled utilizing the 1962 ratioed photographs. (See page 24 of this report.)

A review of all data indicates that it is not the original compilation that is in error, but the re-compilation. In the original NOTES TO THE REVIEWER it is stated that the MHWL was displaced 0.5 mm in order to delineate a road between triangulation station FORT GAINES (USE) 1958 and the MHWL. (See page 23 of this report.) The Field Editor in March 1960 noted on the Field Edit Sheet that the distance from FORT GAINES (USE) 1958 to the MHWL was 10.0 meters. The distance as measured on the revised manuscript is 2.8 mm (28 meters.)

* See note
on page
23 of
this report.

Some filling have^s occurred in the area of latitude $30^{\circ} 14' 44''$ longitude $88^{\circ} 04' 36''$; however, in the immediate vicinity of Fort Gaines the shore is protected by groins and heavy riprap and is not subject to easy change. When the 1962 photography is properly positioned beneath the original manuscript, it indicates that the original manuscript is essentially correct.

62. COMPARISON WITH REGISTERED TOPOGRAPHIC SURVEYS:

Comparison was made with copies of Air Photo Compilation T-5536 and T-5537. The MHWL has receded during the time between surveys. Construction of new roads and development have^s changed the interior of the surveys.

Survey T-10772 supersedes the two prior surveys for nautical chart construction.

63. COMPARISON WITH MAPS OF OTHER AGENCIES:

Comparison was made with USGS FORT MORGAN, ALA., 1:24,000 scale, $7\frac{1}{2}$ minute quadrangle, edition of 1958. The two surveys are in good agreement with the two following exceptions:

Pelican Island has disappeared and is not shown on survey T-10772.

The position and shape of Sand Island has changed completely. It is now approximately 1.5 miles in length and lies in an east-west direction.

64. COMPARISON WITH CONTEMPORARY HYDROGRAPHIC SURVEYS:

Comparison was made with copies of boat sheets H-8524, ECFP-10-1-60 and H-8526, ECFP-10-3-60. The boat sheets and survey T-10772 are in good agreement.

65. COMPARISON WITH NAUTICAL CHARTS:

Comparison was made with Chart 872-SC, 3rd edition, corrected thru NM 37, September 16, 1967. The following were noted:

Pelican Bay Daybeacon 3 was not on station at the time of field inspection or at the time of hydrography.

There is no evidence of Pelican Island on the 1957 photographs nor can a shallow area be distinguished except for some breakers in the area.

The MHWL of Sand Island on the chart and manuscript are not in agreement. It is believed that the chart was revised from later photography than that used in the compilation of T-10772.

The wreck located at latitude $30^{\circ} 11' 55''$, longitude $88^{\circ} 04' 01''$ is not visible on photographs of the area.

Refer to Item 61 of this report and also to page 26 for details concerning the MHWL in the vicinity of Fort Gaines.

66. ADEQUACY OF RESULTS AND FUTURE SURVEYS:

This survey complies with instructions and meets the National Standards of Map Accuracy. **** Refer to note on page 23.*

Reviewed by:

Leo F. Beugnet
Leo F. Beugnet

Approved by:

For J. Bull
J. Bull, RADM, USESSA
Director, Atlantic Marine Center

Approved by:

Charles H. Hume
Chief, Photogrammetry Division *240*

R. H. Houlton
Chief, Photogrammetric Section

John D. Hume
Chief, Nautical Chart Division
Hovine

NOTES TO THE REVIEWER

The field editor states that station FORT GAINES (USE) 1958 is 10 meters west of MHWL.

Between the MHWL and the station is a road which must be shown. In order to properly draft the road and give required clearance between the road and water line symbols it has been necessary to displace the MHWL about 0.5 mm. (5 meters)

* NOTE: (Refer to Side Heading 61, page 21)

The subject revision survey (RS-891) has been applied to the contemporary hydrographic survey smooth sheet covering the common area.

Prior to registration of the photogrammetric survey (T-10772), plates of the 1962 photography were set on a B-8 instrument in the Washington Office. Three triangulation stations and details in agreement on the two surveys (T-10772 and RS-891) were used as horizontal control. The revision work was found to be correct.

All project revision surveys will be filed with other project data in the Federal Records Center.

The revision survey Compilation Report is on page 24 of this Descriptive Report. 188

**

NOTE: (Refer to side heading 66, page 21)

A note on map T-10772 accounts for the error in position of details in the Pelican Point area.

PH-5704
Revision Data

RS-891 (T-10772)

This map was one of 18 project maps revised in 1962 with 1962 photography. Refer to project revision diagram on the following page. 27.

Revision Survey information was not carried forward to the original shoreline surveys. The revised details have been applied to contemporary hydrographic surveys.

Copies of the revision surveys will be filed with other project (PH-5704) data in the Federal Records Center.

Compilation reports for some revision surveys are lost. Available reports are included in the Descriptive Reports for the registered shoreline surveys. JHD

THE AVAILABLE REVISION COMPILATION REPORT IS ON PAGE 25.

24
25

REVISION COMPILATION REPORT

RS-891 (T-10772)
October 1962

(See Descriptive Report T-10763 thru T-10768 *
for the revision report covering this manuscript.)

The original compilation proved to be in
error in the vicinity of Fort Gaines. This area has been
re-compiled utilizing the 1962 ratioed photographs.

On this manuscript 1962 photography was not
available south of latitude $30^{\circ}14'$.

Sand Island and Pelican Island fall south of
this latitude and could not be revised.

Pelican Bay Daybeacon 2 1958 was not visible
on the 1962 photography.

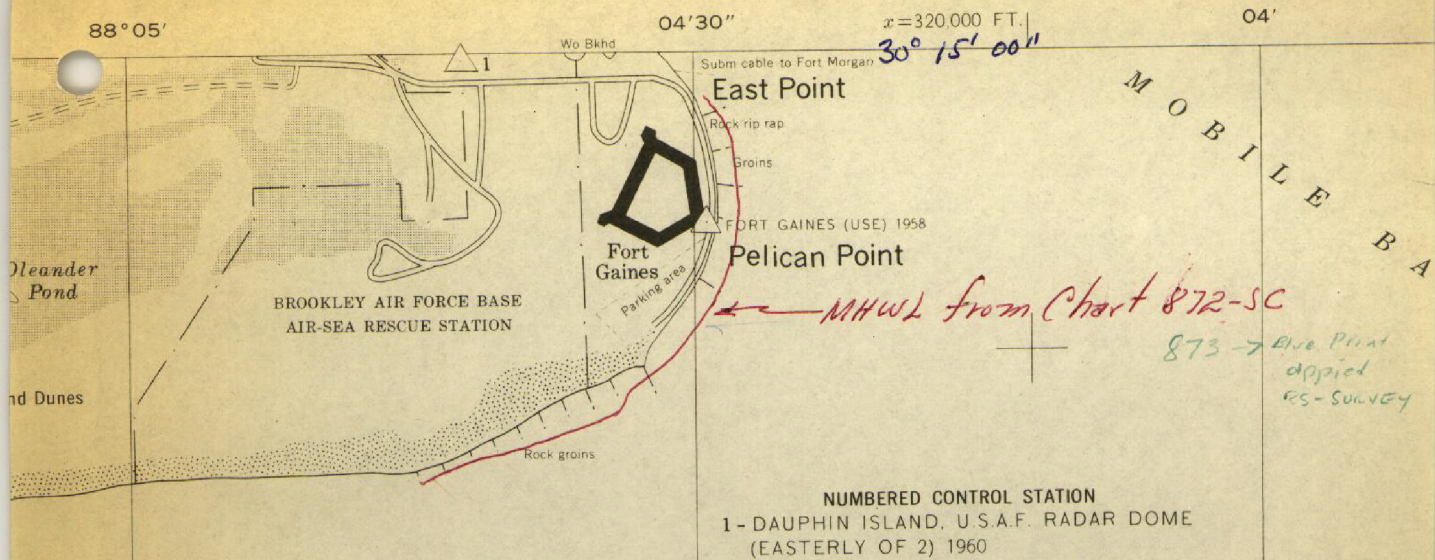
John T. Gerlach

John T. Gerlach

* REPORT WAS NOT FOUND

T-10772

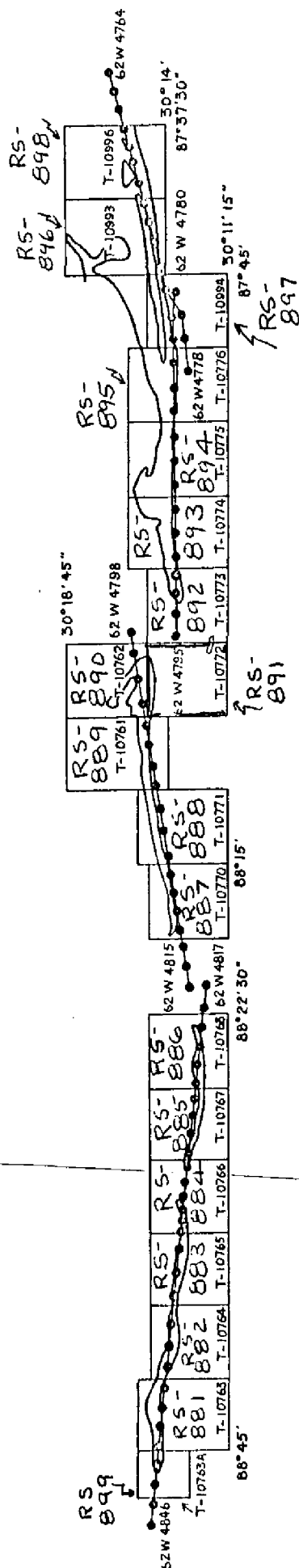
26



PROJECT PH-5704 (REVISION)

MOBILE BAY, ALABAMA - MISSISSIPPI SOUND, MISS.

SCALE - 1:10,000
SEPTEMBER, 1962



• 1:20,000 RC-8 (Pen) Photographs. Photographs also 1:10,000 ratio prints for Hydro Support.