

2520

Form 504

U. S. COAST AND GEODETIC SURVEY

DEPARTMENT OF COMMERCE

DESCRIPTIVE REPORT

Type of Survey

*Topographic*

Field No.

Office No.

*2520*

LOCALITY

State

*Alaska*

General locality

*West Side of*

Locality

*Pennell River*

*Bering Sea*

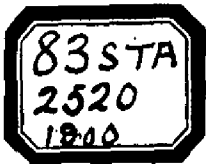
*1900*

CHIEF OF PARTY

*J. F. Pratt*

LIBRARY & ARCHIVES

DATE



(Title & 2 Pages)

552620

U. S. COAST & GEODETIC SURVEY,  
DR. HENRY S. PRITCHETT, SUPERINTENDENT.

DESCRIPTIVE REPORT  
OF THE  
TOPOGRAPHIC SHEET, SCALE 1/40,000.

EMBRACING  
THE  
SHORE LINE AND CONTIGUOUS TOPOGRAPHY  
FROM  
THE WEST SIDE OF PENNY RIVER TO AND INCLUDING SLEDGE ISLAND.

NORTHERN SHORES  
OF  
BERING SEA,  
ALASKA.

BY THE PARTY UNDER CHARGE OF J. F. PRATT, ASSISTANT C. & G. S.  
AUGUST- 1900.

TOPOGRAPHY BY R. L. FARIS, ASSISTANT C. & G. S.

DESCRIPTIVE REPORT,  
TOPOGRAPHY FROM WEST SIDE OF PENNY RIVER  
TO  
AND INCLUDING SLEDGE ISLAND.  
SCALE, 1/40,000.

PLANE TABLE SURVEY BY R. L. FARIS, ASSISTANT C. & G. S.  
AUGUST 1900.

As the burning tundra had delayed the triangulation, as explained in three descriptive reports, covering the distance from Golofnin Bay to this sheet, this area was also surveyed by using telemeter distances. Probably on account of more constant weather conditions its distortion was very much less than the three previous sheets. As the area is very much less and the distortion comparatively small, I deemed it best to fit a projection to this, the Original Field Sheet. The correction to scale in both directions is given on the foot note of the sheet.

The streams Cripple, Rodney, Sonora and Quartz Creeks are not navigable.

Penny Mountain (Penny  $\Delta$ ) and the two peaks to the West of it are conspicuous from the eastward, as abruptly terminating the ridges that extend inland. The sea faces of these three steep slopes, where hachured, are principally composed of a dark disintegrating rock,

The greater portion of the land travel between Nome City and Port Clarence is along the sandy and gravelly beach in front of these bluffs.

The settlements (houses) scattered along the shore line of the sheet are principally houses of beach miners.

Sledge Island, about 600 feet high, is a very conspicuous landmark with its precipitous sides. It is largely composed of broken irregular granite rocks, partially covered with moss and grass.



Assistant C. & G. survey,

Chief of Party.