

3698

U. S. COAST AND GEODETIC SURVEY
No. 3698
Date
App. No.

Form 504
DEPARTMENT OF COMMERCE
U. S. COAST AND GEODETIC SURVEY

State: _____

11-5613

DESCRIPTIVE REPORT.

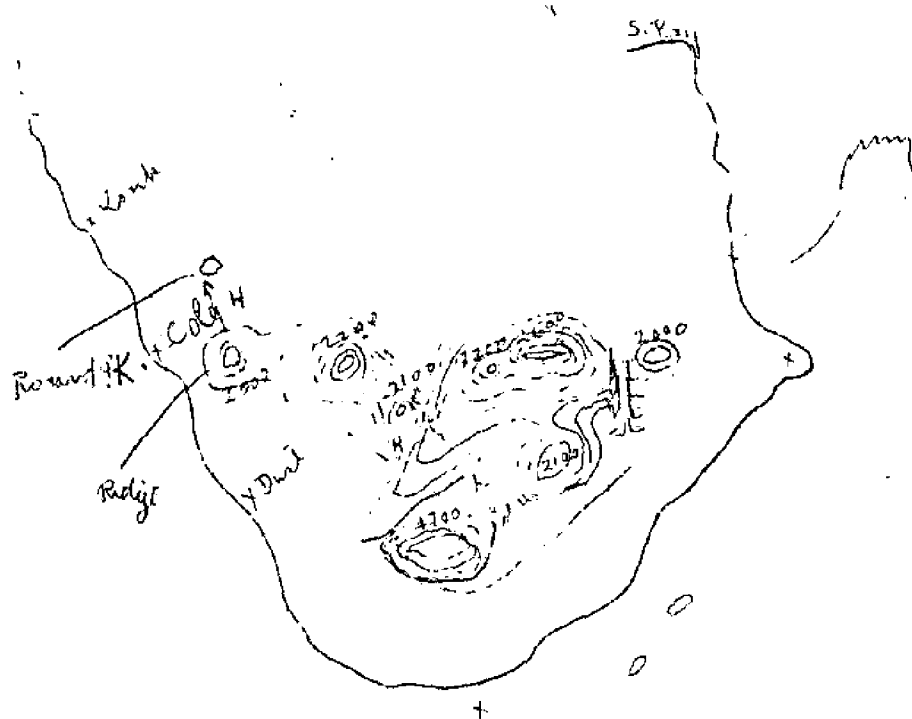
Map Sheet No. *3698*

LOCALITY:

191

CHIEF OF PARTY:

3698







DESCRIPTIVE REPORT TO ACCOMPANY TOPOGRAPHIC SHEET #1, (Ship's Number).

LIMITS:- The area covered in this survey extends from about a quarter of a mile south of Mite Island, along Lisianski Inlet to a point about 2-1/2 miles southeast of Junction Island, and along Lisianski Strait to a point about 1-1/2 miles south of the southernmost of the two small islands.

GENERAL DESCRIPTION:- This area is in general mountainous, rising to heights ranging from 1,000 to 3,400 feet. These mountains rise abruptly from the water's edge. The shore is rocky, interspersed with boulders, or pebbles and sand beaches at the mouth of each large creek. The slopes are wooded with evergreens of rather poor quality to about an elevation of 1,200 feet. Some deciduous trees grow along the creek banks and at their mouths. There is a little undergrowth. The tops of the mountains are bare rock. There are many small streams emptying into the Inlet and Strait. Fish, as salmon, small cod, and herring are found in fair quantities in season. Game is plentiful.

DETAILED DESCRIPTION:- Miner Island is a small island lying at the junction of Lisianski Strait and Lisianski Inlet. It is about 300 meters by 250 meters in dimensions, heavily wooded with evergreens, on the northern side attaining an elevation of about 50 ft. The island is separated from Yakobi Island at high water by a channel about 100 meters wide.

Junction Island, (local name) is a small rocky wooded island lying about a mile southeast (true) of Miner Island. This island is about 100 meters, by 50 meters in dimension, and lies about 1/2 mile from either shore. To the north and east extends a reef of rocks whose tops are bare except at extreme spring H. W.

Two small islands lie in Lisianski Strait about a mile south of the junction of Lisianski Inlet and Strait. The northernmost of these two islands is grass covered, with a lone tree about in the center. The southernmost is rocky and well wooded. Several rocks bare at H. W., around this island.

KELP PATCHES:- A kelp patch was discovered around a rock about 300 meters off "Wil" and a daylight beacon erected on shore to mark it. This kelp patch was located by hydrography and not shown on the sheet.

Two kelp patches were located by hydrography to the northwest (true) of Junction Island.

Between the two small islands and Shichagoff Island thick kelp grows and extends some little distance close to the shore up and down the Strait.

DESCRIPTIVE REPORT TO ACCOMPANY TOPOGRAPHIC SHEET #1, (Ship's Number).

The water in general is deep and free from dangers except in the kelp patches noted above and at a sand spit that extends out from Yakobi Island just south of the two islands in Lisianski Strait.

SURVEYING METHODS:- The shoreline was mapped by traversing with intermediate sights taken about every 100 meters. The distance between setups is about 500 meters. The greatest error of closure was about 20 meters in distance and 30 meters in azimuth which was adjusted. All errors of closure have been adjusted. Magnetic lines were put on by declinator, but were used only for checking orientation. The three point problem was resorted to wherever that method would facilitate the work. The sextant was used only in checking up shoreline.

The elevations of peaks was obtained by elevation angles and directions from two or more setups. The contours were sketched by eye in the field using the shoreline and elevations to control them. The contour interval is 100 feet.

The whole survey was controlled by triangulation which preceded the topography.

Respectfully submitted,

H. W. Pease

Aid, C. & G. Survey

BWF/MDG

LIST OF PLANETABLE POSITIONS TO ACCOMPANY TOPOGRAPHIC SHEET #1

<u>Object</u>	<u>Lat.</u>	<u>Sec-Meters</u>	<u>Long.</u>	<u>Sec-Meters</u>	<u>Elevation</u>	<u>Remarks</u>
Ajax	57 - 58	763	136 - 17	75	H.W.	Cement.
Rex	57 - 57	1823	136 - 14	180	2	W.W.
Curl	57 - 59	83	136 - 15	727	2	W.W.
Lamp	57 - 58	1127	136 - 17	316	H.W.	W.W.
Sam	57 - 59	505	136 - 19	416	1	W.W.
Bus	57 - 59	1359	136 - 20	204	1	Cement.
Jam	58 - 00	1186	136 - 18	183	1	W.W.
Ang	58 - 01	290	136 - 19	237	1	Cement
Pat	58 - 01	1683	136 - 19	899	2	W.W.
Ros	58 - 02	648	136 - 20	464	H.W.	W.W.
Hih	58 - 02	1350	136 - 20	835	2	W.W.
See	58 - 02	1760	136 - 21	473	2	W.W. Cement.
Veld	58 - 03	344	136 - 22	424	H.W.	Cement.
Out	58 - 03	557	136 - 22	892	H.W.	W.W.
Leo	58 - 03	1342	136 - 23	723	H.W.	W. W.
Bomba	58 - 03	948	136 - 25	630	7	Cement.
Yel	58 - 03	442	136 - 25	424	H.W.	Cement.
Rik	58 - 03	371	136 - 24	672	H.W.	Cement.
Pin	58 - 02	1707	136 - 24	159	H.W.	Cement.
Fab	58 - 02	933	136 - 23	437	H.W.	Cement.
Red	58 - 02	344	136 - 22	598	H.W.	Cement.
Wil	58 - 01	1553	136 - 22	22	H.W.	Cement.
Jim	58 - 01	752	136 - 21	244	H.W.	Cement.
Mas	58 - 00	1734	136 - 20	804	H.W.	Cement.
Pit	58 - 00	1254	136 - 20	435	H.W.	W.W.
Camp	58 - 00	1179	136 - 20	341	H.W.	Cement.
Ted	58 - 00	943	136 - 20	66	H.W.	W.W.
Tri	57 - 59	914	136 - 22	71	10	Lone tree on island.
Poy	57 - 59	529	136 - 22	184	H.W.	W.W.

Cement signifies station marked with a pat of cement, with
 "U. S. C. & G. S. 1917, PT." stenciled on the face.

Copy checked H.W.D.

DEPARTMENT OF COMMERCE
U. S. COAST AND GEODETIC SURVEY

TOPOGRAPHIC TITLE SHEET

The finished Topographic Sheet is to be accompanied by the following title sheet, filled in as completely as possible, when the sheet is forwarded to the Office.

U. S. Coast and Geodetic Survey.

Register No. 3698

State . . . ~~Alaska~~

General locality . . Lisianski Inlet and Strait

Locality . ^{END} ~~Northward~~ of Lisianski Inlet and Lisianski Strait

Chief of party . . . C. G. Quillian

Surveyed by Harold W. Pease

Date of survey . . . June, - Aug., 1917.

Scale 1:20,000

Heights in feet above . . H. W.

Contour interval . 100 . feet.

Inked by . . . H.W.P. . . Lettered by

Records accompanying sheet (check those forwarded): Photographs,

✓ Descriptive report, Horizontal angle books, Field computations,

Data from other sources affecting sheet \ . .

Remarks:

DEPARTMENT OF COMMERCE
U. S. COAST AND GEODETIC SURVEY

Ship No 9

TOPOGRAPHIC TITLE SHEET

The finished Topographic Sheet is to be accompanied by the following title sheet, filled in as completely as possible, when the sheet is forwarded to the Office.

U. S. Coast and Geodetic Survey.

Register No. 3698

State . . . Alaska

General locality . . . Lisianski Inlet and Strait

Locality . . . ^{End} Northwest of Lisianski Inlet and Lisianski Strait

Chief of party . . . C. G. Quillian

Surveyed by . . . Harold G. Pease

Date of survey . . . June, - Aug., 1917.

Scale 1:20,000

Heights in feet above . . . H. W.

Contour interval . 100 . . feet.

Inked by . . . H. V. P. . . Lettered by

Records accompanying sheet (check those forwarded): Photographs,

✓ Descriptive report, Horizontal angle books, Field computations,

Data from other sources affecting sheet

1 Check 16 Spring Top station (revised only)

Remarks: