

6673 a&b
6672 a&b

U. S. COAST & GEODETIC SURVEY
LIBRARY AND ARCHIVES

JAN 11 1940

Ass. No. _____

6674

Diag'd. on Diag. Ch. No. 1264, & 1263

Form 504 Rev. Dec. 1933	
DEPARTMENT OF COMMERCE U.S. COAST AND GEODETIC SURVEY — R. S. RANTON, DIRECTOR	
L. O. Colbert, Director	
DESCRIPTIVE REPORT	
Topographic	T-6672 a, b
Hydrographic	Sheet No. T-6673 a, b
	T-6674
State <u>Florida</u>	
LOCALITY <u>Intracoastal Waterway</u>	
<u>Choctawhatchee Bay- West Bay</u>	
1939	
CHIEF OF PARTY <u>George L. Anderson</u>	

U. S. GOVERNMENT PRINTING OFFICE: 1934

6673 a&b
6672 a&b

T-6672 a+b and T-6673 a+b, applied to drawing of 1115 July 30, 1940 JGL.
 T " a+b " " " " " 1268 Sept " Dist.
 T-6673 a+b - 6674 " " 1263 Oct " Dist.
 T-6672 a+b, T-6673 a+b, T-6674 a+b " new chart 8700 July 1946 M.L.H.
 T-6673 T-6674 " " new chart 869 Oct 1946 was B

DEPARTMENT OF COMMERCE
U. S. COAST AND GEODETIC SURVEY

TOPOGRAPHIC TITLE SHEET

Each Topographic and Graphic Control Sheet, and each Air Photographic Drawing should be accompanied by this form, completed so far as practicable, when forwarded to the Washington office.

Registry No. 6672 a&b, 6673 a&b

Field No.

Scale 1-10,000

State Florida General locality Choctawhatchee - West Bay

Specific locality Connecting Intra-coastal Waterway

Dates: Survey began 7 Feb. 1946 Completed 7 Feb. 1946

Photography 18 May 1945, Supplemented by ground surveys to 7 Feb. 1946

Project No. Ph-1 (45) Instructions dated 7Dec45; Sup. 1, 28Dec45; Sup. 2, 5Jan46; Sup. 3, 31Jan46.

Vessel } or Shore Party Chief of party E. L. Jones

Field work by B. Locke Office work by B. Locke

Final inking by I. I. Saperstein

Ground elevations } in feet above { M. H. W.
Treetop elevations } or {

Contours } by { Planetable
Approximate contours } Multiplex } Interval ft.
Form lines }

REMARKS

T6672a, b T6673a, b

DESCRIPTIVE REPORT TO ACCOMPANY
TOPOGRAPHIC SHEET REGISTRY NOS. 6672a, 6672b
and 6673a, 6673b

PROJECT: Ph-1 (45) DATE OF INSTRUCTIONS: 7 Dec.45; Sup.1,
28 Dec.45; Sup.2, 5 Jan.46; Sup.3, 31 Jan.46

DATE OF FIELD WORK: 7 Feb. 1946.

PURPOSE: To locate on the sheet existing aids to navigation and make major topographic revisions where necessary in the original shore line and topographic detail.

FIELD WORK: The field work consisting of additions and corrections to the original survey have been shown on the sheet in orange ink to distinguish them from the original work. Only these corrections and additions are discussed in this report.

AIDS TO NAVIGATION: No aids to navigation are located on these sheets. The only aids in the area covered by these sheets are in West Bay Creek and they are located on sheet 6305.

MAJOR TOPOGRAPHIC CHANGES: The shoreline was field inspected and inked on photos 45C2979, 2981-82, 2984-85, 2988, 2990, 2992, 2994, 2998-99.

LANDMARKS, GEOGRAPHIC NAMES, COAST PILOT CORRECTIONS, RECOVERY OF HORIZONTAL CONTROL, MAJOR TOPOGRAPHIC CHANGES, HYDROGRAPHIC INFORMATION, FIELD INSPECTION OF PHOTOGRAPHS, and DISCREPANCIES IN PUBLISHED BRIDGE DATA have been made the subject of a special report and is submitted by areas for this project. The area of this sheet is covered in Special Report, Project Ph-1 (45) West Bay - Pensacola Bay Entrance.

Submitted by

Boynton Locke, Jr.
Boynton Locke, Jr.
Topographic Aid

Approved and forwarded

Edmund L. Jones
Edmund L. Jones,
Chief of Party

DEPARTMENT OF COMMERCE
U.S. COAST AND GEODETIC SURVEY

REG. NO.

TOPOGRAPHIC TITLE SHEET

The Topographic Sheet should be accompanied by this form, filled in as completely as possible, when the sheet is forwarded to the Office.

Field No. G. & H.

T6672 a

T6672 b

REGISTER NO. T-6672 a, b

State.....Florida.....

General locality.....Choctawhatchee Bay - West Bay.....

Locality.....Western End of Intracoastal Waterway.....

Scale 1:10,000..... Date of survey.....July, August....., 1939

Vessel.....Shore Party No. 1.....

Chief of party.....George L. Anderson.....

Surveyed by.....George L. Anderson.....

Inked by.....George L. Anderson.....

Heights in feet above M.H.W.to ground ~~to tops of trees~~

Contour, Approximate contour, Form line interval.....feet

Instructions dated.....April 13....., 1939

Remarks:.....

DEPARTMENT OF COMMERCE
U.S. COAST AND GEODETIC SURVEY

REG. NO.

TOPOGRAPHIC TITLE SHEET

The Topographic Sheet should be accompanied by this form, filled in as completely as possible, when the sheet is forwarded to the Office.

Field No. J. & K.

REGISTER NO. T-6673 a, b

T6673 a
T6673 b

State Florida

General locality Choctawhatchee Bay- West Bay Canal

Eastern End of Intracoastal Waterway
Locality Eastern end

Scale 1:10,000 Date of survey July, August, 1939

Vessel Shore Party No. 1

Chief of party George L. Anderson

Surveyed by George L. Anderson

Inked by George L. Anderson

Heights in feet above M.H.W. to ground to-tops-of-trees

Contour, Approximate contour, Form line interval feet

Instructions dated April 13, 1939

Remarks:

DEPARTMENT OF COMMERCE
U.S. COAST AND GEODETIC SURVEY

REG. NO.

TOPOGRAPHIC TITLE SHEET

The Topographic Sheet should be accompanied by this form, filled in as completely as possible, when the sheet is forwarded to the Office.

Field No. L

REGISTER NO. T-6674

T6674

State Florida

General locality West Bay

Locality Entrance to Intracoastal Waterway

Scale 1:10,000 Date of survey July, August, 1939

Vessel Shore Party No. 1

Chief of party George L. Anderson

Surveyed by George L. Anderson

Inked by George L. Anderson

Heights in feet above M.H.W. to ground to tops of trees

Contour, Approximate contour, Form line interval feet

Instructions dated April 13, 1939

Remarks:

DESCRIPTIVE REPORT
to accompany
Topographic Sheets Nos.
T-6672 a-b }
T-6673 a-b } 1939
T-6674 }

INSTRUCTIONS

This survey was made according to the instructions for Project No. H.T. 234, dated April 13, 1939, and supplemental instructions dated April 18, 1939.

LOCALITY AND LIMITS

The surveys on these sheets cover the Intracoastal Waterway from Choctawhatchee Bay to St. Andrews West Bay, including the location of Hydrographic signals in West Bay. The location of hydrographic signals in Choctawhatchee Bay will be treated in a separate report.

PURPOSE

A Topographic survey of this area, on a scale of 1:20,000 was made by air photographic mapping in 1935⁴. Projections for this survey were made on a scale of 1:10,000 and the shore line at both ends of the canal transferred in pencil to the sheets by the Washington Office. The purpose of this survey is the charting survey of the canal, and a survey of the changes at each end of the canal.

CONTROL

Triangulation established by this bureau in 1934 and 1935, adjusted to N.A. 1927 datum, was used for the control of surveys in this area.

SURVEY METHODS

Office Work

Complying with the supplemental instructions for this project, information was requested from the District Engineer's Office at Mobile, Alabama, regarding any control established by the U.S. Engineer's Office along the Intracoastal Waterway. Prints of the canal were furnished by that office, and also the information that the original survey records were on file at

the Panama City Office.

The Chief of Party went to Panama City on July 19, 1939 and examined the field survey notes. Two original field note books and other data was temporarily loaned to this party.

After a study of the notes, it was learned that they contained the following information:

(1) A centerline traverse throughout the canal of at least second order accuracy was made before dredging began. This traverse made connections to the following C. & G.S. triangulation stations and it was adjusted between successive stations : WEST BAY 1935, LAIRD 1935, COUNTY 1935, SAP 1935, POINT WASHINGTON MID BASE 1934, and WESLEY 1935.

(2) Right-of-Way monuments, concrete with C.of E. discs were set along the north and south R.O.W. lines at frequent intervals. The positions of these monuments were accurately determined by distances and directions from the center line traverse.

(3) Range monuments, concrete with brass pin, to reference the centerline of the cuts were established. Two of these monuments were established at each end of each cut, beyond the P.I.s and in range with center lines of the cuts. The points of intersection of the tangents (or cuts) are also marked by concrete monuments, except where they are inaccessible. The Geographic positions of the P.I.s and the range monuments were computed by the U.S. Engineer's Office.

(4) Another system of monuments, called the "base line", are located along the sides of the canal and now fall between the canal and the dumping area. These points are marked by 5 X 5 concrete monuments containing a copper plate on which the station number and the distance to the centerline is stamped. Sign posts, visible from the canal, are placed by these marks to aid in locating them.

These monuments were located by distances and directions from the center line traverse before dredging was started.

Before beginning field work on these sheets the center line of the canal was plotted on the sheets by using the following data:

(1) The geographic positions of the points of intersection of the tangents were plotted.

(2) The geographic positions of the two range monuments beyond the P.I.s at each end of the Cuts were plotted.

(3) The center line of each cut was drawn through the six geographic positions marking the center line of each cut.

(4) The original survey notes showing the angles and distances were used to verify the center line by graphic plotting from one C & G.S. station to the succeeding stations.

(5) Using the center line as constructed on the sheets, the Right-of-Way monuments and Base line monuments were plotted graphically on the sheet from the center line by using the station number and the distance from the center line.

FIELD Work

After the U.S.E. stations described above had been plotted on the sheets, planetable traverses were run as follows:

TUCK to Station 1182 + 19.86 (on sheet No. T-6671 b):

POINT WASHINGTON MID BASE 1934 to Station 1055 + 53.81.

SAP 1935 to Station 903 + 73.97.

LAIRD 1935 to Station 411 + 96.46.

WEST BAY 1935 to Station "P".

Each of the above traverse connections checked the positions of the U.S.E. stations.

It was decided at this time that the positions of the U.S.E. stations, as plotted on the sheets based on the second order traverse control, were correct to approximately second order accuracy. Also that the position of the canal could be more accurately charted, and at less expense, by referencing surveys to the center line of the cuts and the U.S.E. stations rather than by attempting to run a continuous planetable traverse along the canal.

The U.S.E. stations were used in connection with C & G.S. triangulation stations to make a planetable survey of the cut and shore line changes from Choctawhatchee Bay to Station 1106 +47.06 (Long. 86 °06'), and from the West Bay entrance to the canal to the vicinity of LAIRD 1935 (Long 85 °55').

The canal from Station 411 +96.46, near LAIRD to Station 1106 +47.06 was surveyed by measuring the width of the canal at the water line by stadia at all stations inked on the sheets and by inspection of the relation of the U.S.E. base line station to the waterline. As these stations were as much as forty feet above the water, the horizontal distance from them to the water's edge was not measured.

U.S.E. STATIONS RECOVERED

Of all the monuments set by the U.S.E. along the canal the base line stations, which now fall between the canal and the dumping area, are the only ones readily recoverable. In addition to the concrete marks, these stations are also marked by sign posts which are visible from the canal. A few of the R.O.W. monuments are also recoverable. In general the Range Marks, the P.I.s and most of the R.O.W. marks were not recovered because they were covered by dumping. Many of them were searched for and not found. Those stations which were recovered are inked on the sheets in red and have been described on Form 524. They are also given in the list of planetable positions. In as much as the station number is stamped on the marks, and the sign post, they have been given a station number and the distance to center line (CL) instead of names.

INKING THE SHEETS

Black ink has been used on the sheets to show surveyed features.

Blue ink has been used on the sheets to show points used in the construction of the centerline, these points were not recovered in the field.

Red ink has been used on the sheets to show positions of survey marks which were recovered in the field.

The banks of the canal and the shore line changes surveyed near both ends of the canal are inked on the sheets in black.

The U.S.E. stations along the canal which have been recovered are inked on the sheets in red, similar to regular topographic signals. The elevation of these stations were taken from the U.S.E. maps which accompany this report.

The P.I.s, the range marks at the ends of each cut, stations "P" at West Bay, and P.O.T. Cut 11, which were used in constructing the center line on the sheets, but were not recovered in the field, are inked on the sheet in small blue circles. The center line of the cuts are inked on the sheets in blue.

SHEET NO. T-6672 a, b

This sheet covers the survey of the western end of the land cut from Choctawhatchee Bay to West Bay. This survey connects with the surveys on Sheet No. T-6671 b in the vicinity of ^{T-6672b} Tucker Bayou at Point Washington. The topographic signals were located by rod readings from a planetable set up at SOY.

Shore line changes are noted where the canal crosses Tucker Bayou and ^{T-6672a} Peach Creek.

The auto ferry across the canal in Long. $86^{\circ} 06'$ is a flat barge, of four car capacity, operated by man power on a cable which can be dropped to the bottom when not in use.

^{T-6672a}

✓ ch 870
was
4/11/47

A telephone line crosses the canal near Station No. 1034.

T-6672a ✓

The land is flat and ^{has} little elevation west of the ferry. Southeast from the ferry the elevation of the land gradually increases. Elevations obtained from U.S.E. maps are given in parenthesis at each station.

Mile Post 265 is a sign post at the water's edge. It was located by a rod reading from station 903 +73.97.

T-6672b ✓

SHEET NO. T-6673 a, b

This sheet covers the survey of the eastern end of the Choctawhatchee Bay- West Bay canal.

Mile 270 is a sign post at the water's edge. It was located by a rod reading from Station 387+ 42.34.

T-6673a ✓

The elevated ground through the cut decreases rapidly east of Station 454 +65 to Long. 85° 55' where it is about 5 feet. The elevation from this point to P.I. 3-4 continues to be about 5 feet and ^{to} the east of this point it drops off into the marshy area.

T-6673a

T-6673b

Changes in West Bay Creek from LAIRD 1935 to WEST BAY 1935 have been surveyed and inked on the sheet. Dumping while dredging the canal has covered many of the previous water areas. Previously shown creeks which have ~~now~~ been filled have been erased from the sheet. Creeks which remain unchanged and were not resurveyed are shown on the sheet in pencil. In the vicinity of the town of West Bay dumping has caused extensive changes along the north-east shore. The south shore in this area remains unchanged.

T-6673b

SHEET NO. T-6674

This is a ~~graphic control~~ sheet and covers the West Bay entrance to the Intracoastal Canal.

The survey on this sheet was made for the purpose of locating signals for hydrographic revision surveys in the entrance to the Intracoastal canal, and to locate any shore line changes evident.

The lights and beacons in the West Bay entrance to the canal are located on this sheet. ✓

The following triangulation stations were recovered and used for control on this sheet: WEST BAY 1935, ORCUS 3, 1934, MEDWAY 3, 1934, CRANE POINT 2, 1934, and MUD 1935. Topographic stations SOW 1935 and PIG 1935 were recovered and relocated. PIG 1935 had been disturbed, the mark was reset and is now called PIG 2, 1939. ✓

Shore line changes caused by dumping while dredging in the channel are shown on the north side of the entrance to West Bay Creek. ✓

The Light List names for the lights and beacons are inked on the sheet in red. Hydrographic names used are given in parenthesis. The PILE near LIGHT 9 is the piling of the old Beacon No. 9 before LIGHT 9 was built. CROSS is a cross banner on a pole, marking the old P.I. 1-2. ✓

The old pile shown on sheet T-5523 in the vicinity of LIGHT 17 no longer exists. ✓

The Local Pole Beacon shown on sheet T-5523, ^{shown also on H-5812 (1935)} south of ORCUS 3, 1934 has been destroyed. The remains of an old pile was noted to be even with the water ^{see Review of H-6451 (1939)} surface at mean tide level. The piling is now in the north side of the channel and it should be ^{taken out} removed. ✓

COMPARISON WITH EXISTING SURVEYS

Air photographic surveys of this area were made in 1935^{ly}. The shore line from those surveys, for the areas at the ends of the canal, was transferred to the topographic sheets before going in the field. In addition to the new canal, dumping has caused changes in the creeks near the ends of the canal. A description of these changes is given under each sheet in this report. ✓

GEOGRAPHIC NAMES

See report on Geographic Names.

MAGNETIC OBSERVATIONS

See report on Magnetic Observations.

LANDMARKS FOR CHARTS

A copy of the list of Landmarks for Charts is attached to this report. Included in the list are the lights and beacons in the West Bay entrance to the canal, the old and new fire towers near West Bay and the Mile Posts along the canal.

APPENDED DATA

Attached to this report are the following:

Statistics.

List of Planetable Positions.

Landmarks for Charts (Copy).

Original Intracoastal Waterway survey notes and computations copied from records at U.S. Engineer Office, Panama City, Florida.

- (1) Geographic Positions of point along U.S.E.D. traverse, along center line of Waterway from Choctawhatchee Bay to West Bay, Fla.
- (2) Geographic Positions of Range monuments, Reference, center line of cuts.
- (3) Right-of-Way monuments.
- (4) Copies of Original Traverse Notes along center line of waterway (7 sheets)
- (5) Copies of Field Survey Notes along center line of waterway, showing location of range monuments and curve layouts (4 sheets).
- (6) Letter from District Engineer, Mobile, Alabama.

Accompanying this report is a set of 8 prints of Maps entitled Waterway from Choctawhatchee Bay to West Bay, Florida, and 1 print of a sheet showing changes in the alignment made in West Bay Approach to the canal.

Bps. 31677 to 31684
Bp. 31685

Accompanying this report are 51 cards, Form 524, Description of
Recoverable Topographic Station.

Respectfully submitted,

George L. Anderson
George L. Anderson,
Lieut. C & G Survey,
Chief of Party.

STATISTICS

Sheet No. T-6672 a-b

Statute miles shore line, including canal.	20
--	----

Number of U.S.E. Stations recovered and located.	27
--	----

Sheet No. T-6673 a-b

Statute miles shore line, including canal.	22
--	----

Number of U.S.E. Stations recovered and located.	19
--	----

PLANE-TABLE POSITIONS
to accompany
Topographic Sheet
No. T-6674

Shore Party No. 1

Season 1939

Scale 1/10,000

Object and description	: Lat. :	D.M. :	Long. :	D.P. :	Height:	Remarks
	:	meters:		meters:	Feet :	
Beacon 3, West Bay	30 16	277	85 49	734	12	
Beacon 5, West Bay	30 16	537	85 49	1245	12	
Beacon 7, West Bay	30 16	720	85 49	1602	12	
Beacon 11, West Bay	30 16	1288	85 50	758	12	
Beacon 13, West Bay	30 16	1639	85 50	1070	12	
Beacon 15, West Bay	30 17	142	85 50	1381	12	
Beacon 19, West Bay	30 17	883	85 51	417	12	
Beacon 21, West Bay	30 17	1117	85 51	621	12	
Breakfast Point Beacon (⊙ Red) at West Bay	30 15	1823	85 48	1089	10	
Cross, West Bay	30 16	232	85 49	1372	12	Cross banner on pile.
Fire Tower (⊙ Fire) new tower, West Bay	30 18	15	85 51	163	80	
Fire Tower (⊙ Old) old tower, West Bay	30 17	889	85 51	820	60	
Light 1, West Bay	30 16	96	85 49	379	30	Light List No. 8044
Light 9, West Bay	30 16	998	85 50	484	30	Light List No. 8045
Light 17, West Bay	30 17	514	85 51	83	25	Light List No. 8046
⊙ Pig 2, Topo. disk	30 17	274	85 47	920	2	Marked Topo. station.
⊙ Sow, Topo. disk	30 17	225	85 48	1598	2	Marked Topo. station.

42A

SURVEY MONUMENTS AND POSTS

Sheet # 1 of 3 sheets.

INTRACOASTAL WATERWAY BETWEEN WEST BAY AND CHOCTAWHATCHEE BAY, FLA.

RECOVERED IN 1939 BY U.S.C. & G.S.

**

STAMPED ON MARK OR POST:		: LATITUDE		: LONGITUDE		: Scale from:	
Station number: Dist. CL		Side of:		: Topo. Sheet:		: Description of Mark.	
Feet	: Feet	: Canal.	: meters:	: meters:	: Elev.	: No.	: Description of Mark.
:	:	:	:	:	:	:	:
238 + 00	125	South	30 18	39	85 51	1320	1' T-6673 b Orange sign post only.
255 + 00	125	South	30 18	427	85 52	59	1' T-6673 b Orange sign post only.
296 + 94.39	250	South	30 18	1360	85 52	934	5' T-6673 b 5 X 5 Concrete monument, C of E disc and Orange sign post.
324 + 29.81	125	South	30 18	1660	85 53	19	10' T-6673 b Orange sign post only.
324 + 29.81	250	South	30 18	1622	85 53	16	11' T-6673 b 5 X 5 Concrete monument, C of E disc.
367 + 41.59	125	South	30 18	1517	85 53	1326	1' T-6673 b 5 X 5 Concrete monument with copper plate.
387 + 42.34	125	South	30 18	1451	85 54	328	1' T-6673 b 5 X 5 Concrete mon. with copper plate.
MILE POST 275		South	30 18	1455	85 54	645	1' T-6673 b Sign Board at edge of water.
411 + 96.46	125	South	30 18	1531	85 54	1082	5' T-6673 b 5 X 5 Concrete mon. with copper plate.
454 + 65	150	South	30 19	88	85 55	716	17' T-6673 a Orange sign post & tack in stake.
480 + 52	150	South	30 19	333	85 55	1465	24' T-6673 a 5 X 5 Concrete mon. with copper plate.
497 + 81.67	150	South	30 19	496	85 56	364	31' T-6673 a Orange sign post and tack in stake.
520 + 28.84	150	South	30 19	711	85 56	1013	25' T-6673 a 5 X 5 Concrete mon. with copper plate.
520 + 29.84	250	North	30 19	826	85 56	975	20' T-6673 a 5 X 5 Concrete mon., C of E disc.
543 + 75.55	125	South	30 19	656	85 57	72	19' T-6673 a 5 X 5 Concrete mon. with copper plate.
543 + 75.55	250	North	30 19	758	85 57	128	19' T-6673 a 5 X 5 Concrete Mon., C of E disc.
626 + 80.48	125	South	30 18	1289	85 58	689	24' T-6673 a 5 X 5 Concrete mon. with copper plate.
626 + 80.48	250	North	30 18	1392	85 58	744	24' T-6673 a 5 X 5 Concrete mon., C of E disc.

147A

SURVEY MONUMENTS AND POSTS

Sheet # 2 of 3 sheets.

INTRACOASTAL WATERWAY BETWEEN WEST BAY AND CHOCTAWHATCHEE BAY, FLA.

RECOVERED IN 1939 BY U.S.C. & G.S.

STAMPED ON MARK OR POST:		LATITUDE		LONGITUDE		Elev.:Topo.Sheet :		Description of Mark	
Station number:	Dist. CL	Side of:	Feet	canal:	Feet	Feet	Feet	No.	
642 + 22.36	150	South	30	18	1173	85	58	1161	26 T-6673 a 5 X 5 Concrete mon. with copper plate.
MILE POST 270		South	30	18	1212	85	59	134	1 T-6673 a Sign board at edge of water.
689 + 30.87	150	South	30	18	1223	85	59	991	27 T-6672 b 5 X 5 Concrete mon. with copper plate.
717 + 39.05	150	South	30	18	1464	86	00	222	30 T-6672 b 5 X 5 Concrete mon. with copper plate.
745 + 47.22	150	South	30	19	226	86	00	844	32 T-6672 b 5 X 5 Concrete mon. with copper plate.
770 + 39.82	250	South	30	19	856	86	00	1272	34 T-6672 b Sign post and tack in 4X4 stake.
804 + 76.36	175	South	30	19	1762	86	01	203	40 T-6672 b Concrete mon. (5 X 5) with copper plate.
841 + 23.12	162.5	South	30	20	862	86	01	782	40 T-6672 b Sign post and tack in stake.
866 + 58.82	150	South	30	20	1396	86	01	1301	36 T-6672 b Sign post and tack in stake.
866 + 58.82	162.5	North	30	20	1476	86	01	1249	38 T-6672 b 5 X 5 Concrete mon. with copper plate.
878 + 99.92	137.5	South	30	20	1605	86	02	15	30 T-6672 b Sign post and tack in stake.
878 + 99.92	150	North	30	20	1676	86	01	1568	35 T-6672 b Sign post and tack in stake.
903 + 73.97	162.5	South	30	21	03	86	02	700	35 T-6672 b 5 X 5 Concrete mon. with copper plate.
903 + 73.97	162.5	North	30	21	103	86	02	686	35 T-6672 b 5 X 5 Concrete mon. with copper plate.
MILE POST 265		South	30	21	104	86	02	1244	1 T-6672 b Sign board at edge of water.
963 + 24.65	150	South	30	21	266	86	03	891	30 T-6672 a Sign post and tack in stake.
1003 + 06.73	162.5	South	30	21	436	86	04	491	40 T-6672 a 5 X 5 Concrete mon. with copper plate.
1003 + 06.73	162.5	North	30	21	533	86	04	479	40 T-6672 a 5 X 5 Concrete mon. with copper plate.

14-1A

SURVEY MONUMENTS AND POSTS

INTRACOASTAL WATERWAY BETWEEN WEST BAY AND CHOCTAWHATCHEE BAY, FLA.

RECOVERED IN 1939 BY U.S.C. & G.S.

STAMPED ON MARK OR POST:											
Station number:	Dist. CL.	Side of:	LATITUDE		LONGITUDE		Elev.: Topo. Sheet :		Description of Mark		
Feet	: Feet.	: canal :	: o	: meters:	: o	: meters:	: Feet :	: No. :			
1034 +09.92	150	South	30	21	573	86	04	1425	35	T-6672 a	Sign post and tack in stake.
1034 +09.92	162.5	North	30	21	666	86	04	1413	40	T-6672 a	5 X 5 Concrete mon. with copper plate
1055 +53.81	150	South	30	21	790	86	05	452	26	T-6672 a	5 X 5 Concrete mon. with copper plate.
1076 +97.7	125	South	30	21	1225	86	05	955	16	T-6672 a	5 X 5 Concrete mon. with copper plate.
1076 +97.7	137.5	North	30	21	1273	86	05	894	18	T-6672 a	Orange sign post only.
1091 +00	125	South	30	21	1556	86	05	1226	17	T-6672 a	Concrete mon. (5 X 5) with copper plate.
1091 +00	125	North	30	21	1604	86	05	1168	17	T-6672 a	5 X 5 Concrete mon. with copper plate.
1106 +47.06	125	South	30	22	74	86	05	1522	10	T-6672 a	Orange sign post only.
1106 +47.06	125	North	30	22	123	86	05	1461	10	T-6672 a	Orange sign post only.
1141 +12.53	250	North	30	22	967	86	06	495	2	T-6672 a	Orange sign post only.
1155 +17.91	250	South	30	22	1105	86	06	926	0	T-6672 a	C of E disc in 6" iron pipe filled with concrete.
1182 +19.86	100	South	30	22	1464	86	07	65	1	T-6672 a	5 X 5 Concrete mon. with copper plate.

Note: Concrete marks listed above have also been described on Form 524.

Compiled by: E.R.O.
Checked by: G.I.A.

141A

DEPARTMENT OF COMMERCE
U. S. COAST AND GEODETIC SURVEYTO BE CHARTED } STRIKE OUT ONE
~~TO BE DELETED~~

LANDMARKS FOR CHARTS

DeFuniak Springs, Florida. September 15, 1939

I recommend that the following objects which have (~~been~~) been inspected from seaward to determine their value as landmarks, be charted on (~~charts~~) the charts indicated.

The positions given have been checked after listing.

George L. Anderson
George L. Anderson,
Chief of Party.

GENERAL LOCALITY	NAME AND DESCRIPTION	POSITION							METHOD OF LOCATION Sheet No.	DATE OF LOCATION	HARBOR CHART	INSHORE CHART	OFFSHORE CHART	CHARTS AFFECTED
		LATITUDE		LONGITUDE			DATUM							
		°	'	D. M. METERS	°	'		D. P. METERS						
	BREAKFAST POINT BEACON	30	15	1823	85	48	1089	N.A. 1927	1939	✓			184	
	WEST BAY LIGHT 1	30	16	96	85	49	379	N.A. 1927	1939	✓			184	
	WEST BAY BEACON 3	30	16	277	85	49	734	N.A. 1927	1939	✓			184	
	WEST BAY BEACON 5	30	16	537	85	49	1245	N.A. 1927	1939	✓			184	
	WEST BAY BEACON 7	30	16	720	85	49	1602	N.A. 1927	1939	✓			184	
	WEST BAY LIGHT 9	30	16	998	85	50	484	N.A. 1927	1939	✓			184	
	WEST BAY BEACON 11	30	16	1289	85	50	758	N.A. 1927	1939	✓			184	
	WEST BAY BEACON 13	30	16	1639	85	50	1070	N.A. 1927	1939	✓			184	
	WEST BAY BEACON 15	30	17	142	85	50	1381	N.A. 1927	1939	✓			184	
	WEST BAY LIGHT 17	30	17	514	85	51	83	N.A. 1927	1939	✓			184	
	WEST BAY BEACON 19	30	17	883	85	51	417	N.A. 1927	1939	✓			184	
	WEST BAY BEACON 21	30	17	1117	85	51	621	N.A. 1927	1939	✓			184	

This form shall be prepared in accordance with 1934 Field Memorandum, "LANDMARKS FOR CHARTS." The data should be considered for the charts of the area and not by individual field survey sheets. Information under each column heading should be given.

GEOGRAPHIC POSITIONS OF POINTS ALONG U.S.E.D. TRAVERSE
ALONG CENTER LINE OF WATERWAY
CHOCTAWHATCHEE BAY TO WEST BAY, FLA.

Sheet No. 1 of 3 Sheets

TRAVERSE RUN FROM U.S.C. & G.S. STA. "CRANE POINT 2" ON WEST BAY TO U.S.C. & G.S. STA. "WESLEY" ON CHOC. BAY, FLA.
NORTH AMERICAN DATUM 1927

STATION	LATITUDE and LONGITUDE	AZIMUTH	BACK AZIMUTH	TO STATION	LOGARITHMS (METERS)	DISTANCE (FEET)
U.S.C. & G.S. CRANE POINT 2	30-15-06.415 85-47-40.045	133-43-30	313-43-09.158	0-00	3.1847108	5,019.90
0-00	30-15-40.758 85-48-21.409	108-54-14.158	288-53-28.866	P.I. 1	3.4046639	8,330.06
P.I. 1	30-16-07.463 85-49-51.274	138-28-58.866	318-28-10.712	"P" Pt. on Bridge	3.5854638	12,631.30
U.S.C. & G.S. "WEST BAY"	30-17-37.454 85-51-31.588	229-07-09.000	49-07-03.33	"P" Pt. on Bridge	2.2310390	558.50
"P" Point on Bridge	30-17-41.072 85-51-26.772	158-28-10.329	318-27-31.339	P.I. 2/3	3.4932606	10,215.70
P.I. 2/3	30-18-56.761 85-52-44.040	83-45-03.339	263-44-11.590	P.I. 3/4	3.4402165	9,040.67
P.I. 3/4	30-18-47.009 85-54-26.565	83-44-11.590	263-44-08.873	"T"	2.1604350	474.70
"T"	30-18-46.496 85-54-31.948	83-43-59.873	263-43-52.898	U.S.C. & G. "LAIRD"	2.5699304	1,218.95
U.S.C. & G.S. "LAIRD"	30-18-45.179 85-54-45.769	255-52-49.600	75-52-56.933	"S"	2.6023302	1,313.17
"S"	30-18-48.350 85-54-31.241	108-16-24.933	288-15-14.435	P.I. 4/5	3.5942713	12,889.96

Note* Positions of U.S.C. & G.S. Stations were given by Geo. L. Anderson, Chief of Party, U.S.C. & G.S. are the field computations and not the final adjusted positions of these stations.

STATION	LATITUDE and LONGITUDE	AZIMUTH	BACK AZIMUTH	TO STATION	LOGARITHMS (METERS)	DISTANCE (FEET)
P.I. 4/5	30-18-48.350 85-54-31.241	61-19-11.435	241-18-19.202	P.I. 5/6	3.4984863	10,338.35
P.I. 5/6	30-18-39.211 85-58-34.367	92-08-54.202	272-08-00.607	COUNTY LINE	3.2503520	5,838.90
COUNTY LINE	30-18-41.367 85-59-40.933	01-25-10.607	181-25-10.162	TRAIL	2.9787185	3,123.20
TRAIL	30-18-10.454 85-59-41.816	02-06-28.162	182-06-27.792	U.S.C.&G. "COUNTY"	2.7262093	1,746.08
U.S.C.&G. "COUNTY"	30-17-53.177 85-59-42.549	U.S.E.D. POSITION				
U.S.C.&G. "COUNTY"	30-17-53.182 85-59-42.549	U.S.C.&G.S. POSITION				
U.S.C.&G. "COUNTY"	30-17-53.182 85-59-42.549	182-06-27.792	02-06-28.162	TRAIL	2.7262093	1,746.08
TRAIL	30-18-10.454 85-59-41.816	181-25-10.162	01-25-10.607	COUNTY LINE	2.9787185	3,123.20
COUNTY LINE	30-18-41.367 85-59-40.933	92-08-00.607	272-07-44.976	P.I. 6/7	2.9180575	2,716.16
P.I. 6/7	30-18-42.367 86-00-11.904	148-17-33.976	328-16-51.813	P.I. 7/8	3.6277137	13,922.17
P.I. 7/8	30-20-39.598 86-01-35.403	122-55-26.813	302-55-13.486	P.I. 8/9	3.0622733	5,786.43
P.I. 8/9	30-20-59.971 86-02-11.677	98-10-47.486	278-10-40.509	PT. 8th CURVE	2.5834547	1,257.10

Note* Positions of U.S.C.&G.S. Stations were given by Geo. L. Anderson, Chief of Party, U.S.C.&G.S. are the field computations and not the final adjusted positions of these stations.

STATION LATITUDE and LONGITUDE
AZIMUTH
BACK AZIMUTH

TO STATION
LOGARITHMS
(METERS)

DISTANCE
(FEET)

PT 8th CURVE	30-21-01.742 86-02-25.880	179-33-05.309	359-33-05.229	U.S.C.&G. "SAP"	2.7308564	1,765.28
U.S.C.&G. "SAP"	30-21-19.212 86-02-25.038	359-32-59.400	179-32-59.480	PT 8th CURVE	2.7308564	1,765.28
PT. 8th CURVE	30-21-01.739 86-02-25.880	98-10-34.480	278-09-07.220	P.I. 9/10	3.6682860	15,284.27
P.I. 9/10	30-21-23.222 86-05-18.559	83-23-47.220	263-23-42.734	U.S.C.&G. MIDDLE BASE	2.3777831	782.95
P.I. 9/10	30-21-23.222 86-05-18.556	141-01-47.220	321-01-13.169	P.I. 10/11	3.4563061	9,381.19
P.I. 10/11	30-22-35.417 86-06-25.910	112-54-46.169	292-54-35.731	POT CUT 11	2.7769295	1,962.67
POT CUT 11	30-22-42.982 86-06-46.551	36-29-57.731	216-29-49.508	U.S.C.&G. WESLEY	2.8635932	2,396.57
U.S.C.&G. WESLEY	30-22-23.803 86-07-02.827	216-29-49.508	36-29-57.731	POT CUT 11*		

*** Corrections made at U.S.C.&G.S. Stations "SAP", "MIDDLE BASE" and WESLEY for Azimuth and position of PT 8th CURVE, P.I. 9/10 and POT CUT 11.

Note* Positions of U.S.C.&G.S. Stations were given by Geo. L. Anderson, Chief of Party, U.S.C.&G.S. are the field computations and not the final adjusted positions of these stations.

~~RANGE~~
GEOGRAPHIC POSITION OF MONUMENTS
REFERENCE CENTER LINE OF CUTS

MON. NO.	LATITUDE	LONGITUDE
1		
2		
3	30-19-01.139	85-52-48.511
4	30-19-07.807	85-52-55.320
5	30-18-57.650	85-52-34.679
6	30-18-58.474	85-52-26.012
7	30-18-46.251	85-54-34.517
8 (LAIRD)	30-18-45.179	85-54-45.769
9	30-18-46.046	85-54-18.935
10	30-18-44.745	85-54-08.621
11	30-19-28.518	85-56-52.342
12	30-19-29.664	85-57-01.444
13	30-19-28.921	85-56-49.661
14	30-19-31.374	85-56-44.491
15	30-18-36.835	85-58-39.370
16	30-18-32.083	85-58-49.377
17	30-18-39.026	85-58-28.667
18	30-18-38.711	85-58-18.977
19	30-18-42.367	86-00-11.904
20	30-18-42.735	86-00-23.304
22	30-18-35.268	86-00-06.850
23	30-20-45.197	86-01-39.393
24	30-20-51.849	86-01-44.133
25	30-20-35.294	86-01-27.740
26	30-20-31.528	86-01-21.035
27	30-21-04.275	86-02-19.341
28	30-21-08.578	86-02-27.005
29	30-20-58.985	86-02-03.770
30	30-20-57.718	86-01-53.603
31	30-21-23.643	86-05-21.948
32	30-21-24.415	86-05-28.162
33	30-21-20.144	86-05-15.688
34	30-21	

Geographic Positions in error
These positions plotted from
field notes

YLa

Monument reset 831.00 ft on range with No. 33 and
P.L. 9/10.

Computations by S.A. Allen & L. J. Matlock

RIGHT-OF-WAY MONUMENTS

No.	R.O.W.	Center Line Station	Stamped	Description
1	South	1182-19.86	P.O.T. South R.O.W. No.1	Standard C of E Tablet in top of terra-cotta pipe filled with concrete.
2	North	1182-19.86	P.O.T. North R.O.W. No.2	" " " "
3	South	1167-63.70	P.O.T. South R.O.W. No.3	" " " "
4	North	1167-63.70	P.O.T. North R.O.W. No.4	" " " "
5	South	1155-17.91	P.T. South R.O.W. No.5	Standard C of E tablet in top of 6" iron pipe filled with concrete.
6	North	1155-17.91	P.T. North R.O.W. No. 6	Standard C of E tablet in top of 5" concrete monument.
7	South	1141-12.53	P.C. South R.O.W. No. 7	" " " in top of 10x12 " "
8	North	1141-12.53	P.C. North R.O.W. No. 8	" " " 5" " "
9	South	1087-23.49	P.O.T. South R.O.W. No. 9	" " " " " "
10	North	1087-23.49	P.O.T. North R.O.W. No.10	" " " " " "
11	South	1076-97.70	P.T. South R.O.W. No.11	do do " " " "
12	North	1076-97.70	P.T. North R.O.W. No.12	do do " " " "
13	South	1051-72.11	P.O.C. South R.O.W. No.13	" " " 8x10 " "
14	North	1051-72.11	P.O.C. North R.O.W. No.14	do do " " " "
15	South	1051-72.11	P.O.C. South R.O.W. No.15	do do " " " "
16	North	1051-72.11	P.O.C. North R.O.W. No.16	do do " " " "
17	South	1034-09.92	P.C. South R.O.W. No.17	" " " 5" " "
18	North	1034-09.92	P.C. North R.O.W. No.18	do do " " " "
19	South	1015-25.02	P.O.T. South R.O.W. No.19	do do " " " "
20	North	1015-25.02	P.O.T. North R.O.W. No.20	do do " " " "
21	South	972-51.47	P.O.T. South R.O.W. No.21	do do " " " "
22	North	972-51.47	P.O.T. North R.O.W. No.22	do do " " " "
23	South	903-73.97	P.T. South R.O.W. No.23	do do " " " "
24	North	903-73.97	P.T. North R.O.W. No.24	do do " " " "
25	South	878-99.92	P.C. South R.O.W. No.25	do do " " " "
26	North	878-99.92	P.C. North R.O.W. No.26	do do " " " "
27	South	866-58.82	P.T. South R.O.W. No.27	do do " " " "
28	North	866-58.82	P.T. North R.O.W. No.28	do do " " " "
29	South	841-23.12	P.C. South R.O.W. No.29	do do " " " "
30	North	841-23.12	P.C. North R.O.W. No.30	do do " " " "
31	South	804-76.36	P.O.T. South R.O.W. No.31	do do " " " "
32	North	804-76.36	P.O.T. North R.O.W. No.32	do do " " " "
33	South	770-39.82	P.O.T. South R.O.W. No.33	do do " " " "
34	North	770-39.82	P.O.T. North R.O.W. No.34	do do " " " "
35	South	745-47.22	P.T. South R.O.W. No.35	do do " " " "
36	North	745-47.22	P.T. North R.O.W. No.36	do do " " " "
37	South	717-39.04	M.P.C. South R.O.W. No.37	do (on midpoint of Curve)

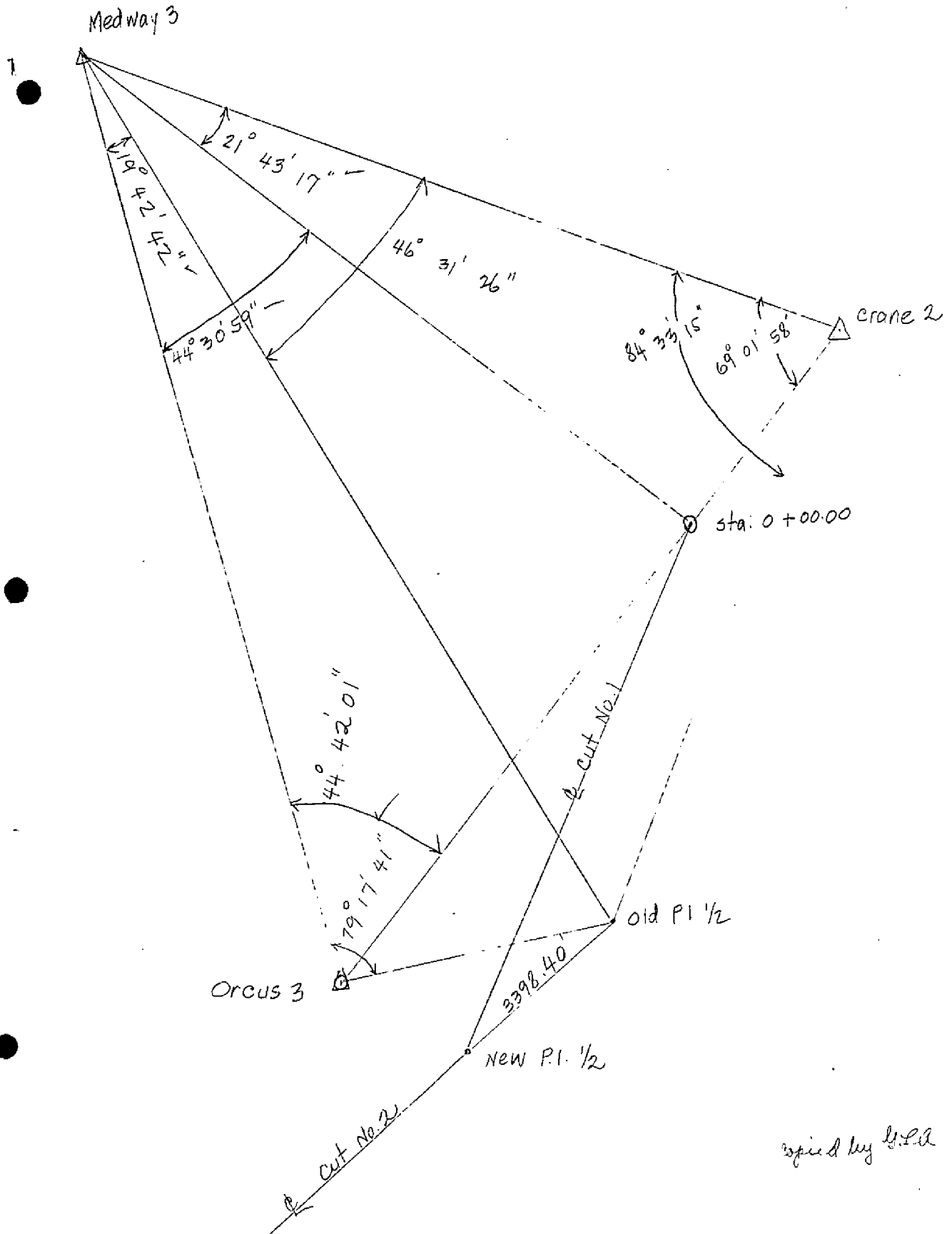
(imbedded in mass concrete in creek)
(on high ridge)
(on ridge)
(on midpoint of Curve)

RIGHT OF WAY MONUMENTS (CONT'D)

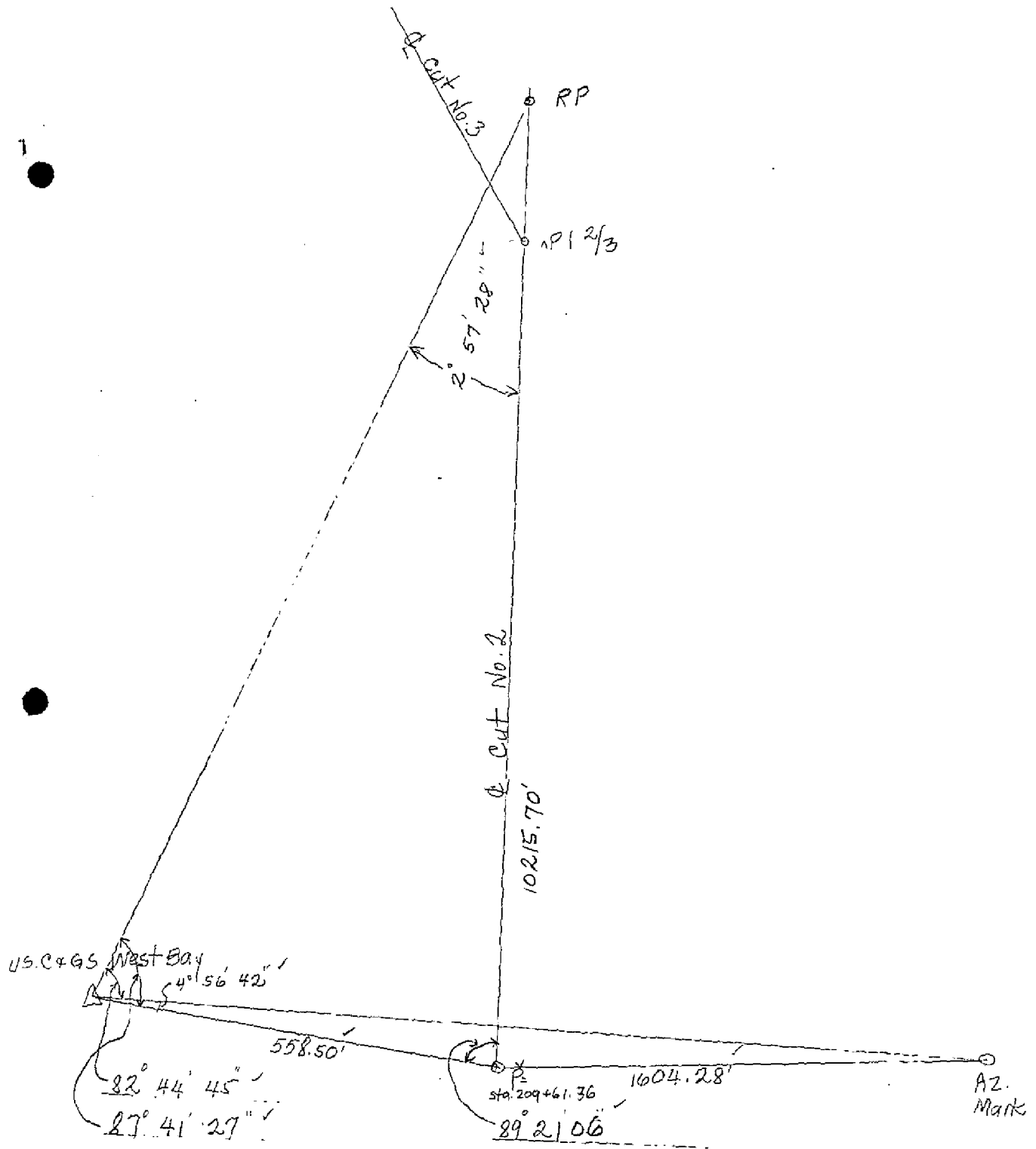
NO.	R.O.W.	CENTER LINE STATION	STAMPED	DESCRIPTION
38	North	717-39.04	M.P.C. North R.O.W. No.38	Standard C of E tablet in 5" Concrete monument
39	South	692-71.80	County Line South R.O.W.No.39	do
40	North	692-71.80	County Line North R.O.W.No.40	do iron pipe 5' long projecting 18" above grnd.

Copies of ORIGINAL TRAVERSE NOTES along center line
of waterway leading from West Bay to Choctawhatchee
Bay.

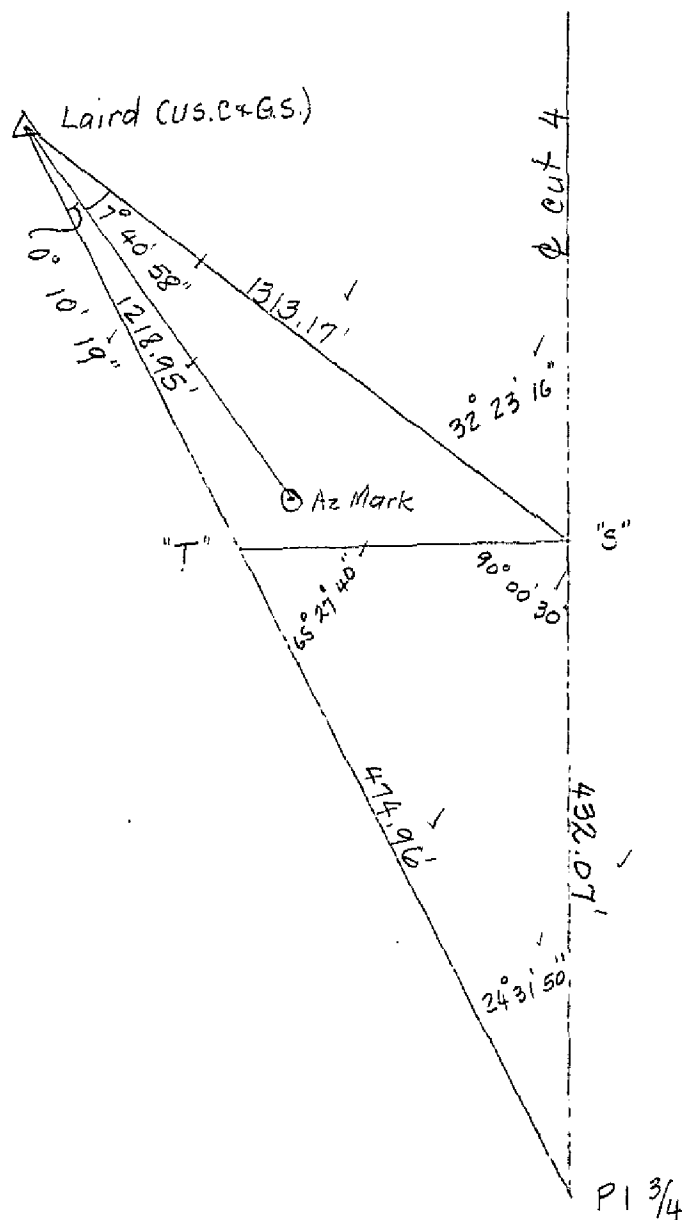
Sheet
No. 1



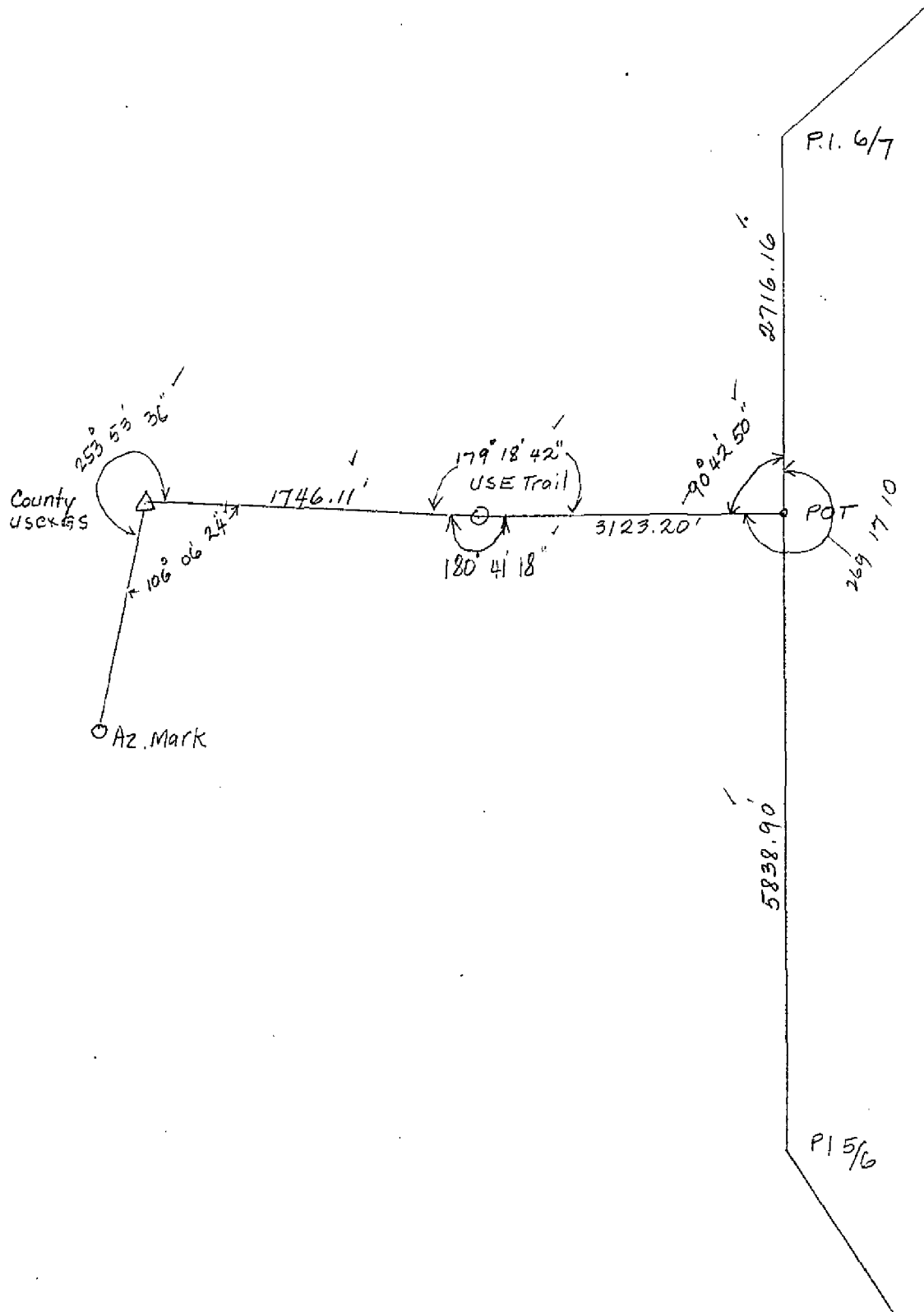
revised by G.L.H.



exp'd by 11-1



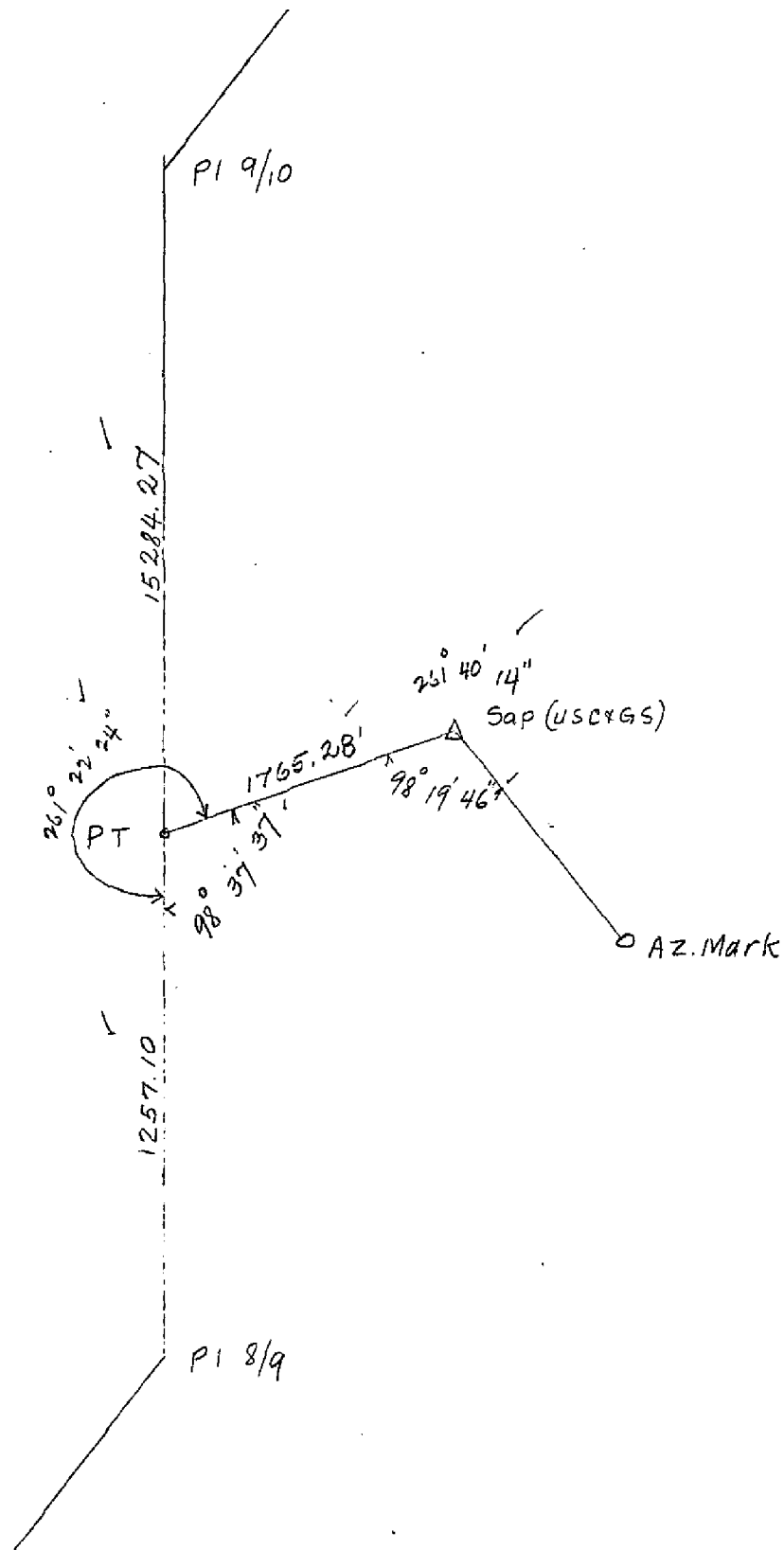
checked by G.L.A.



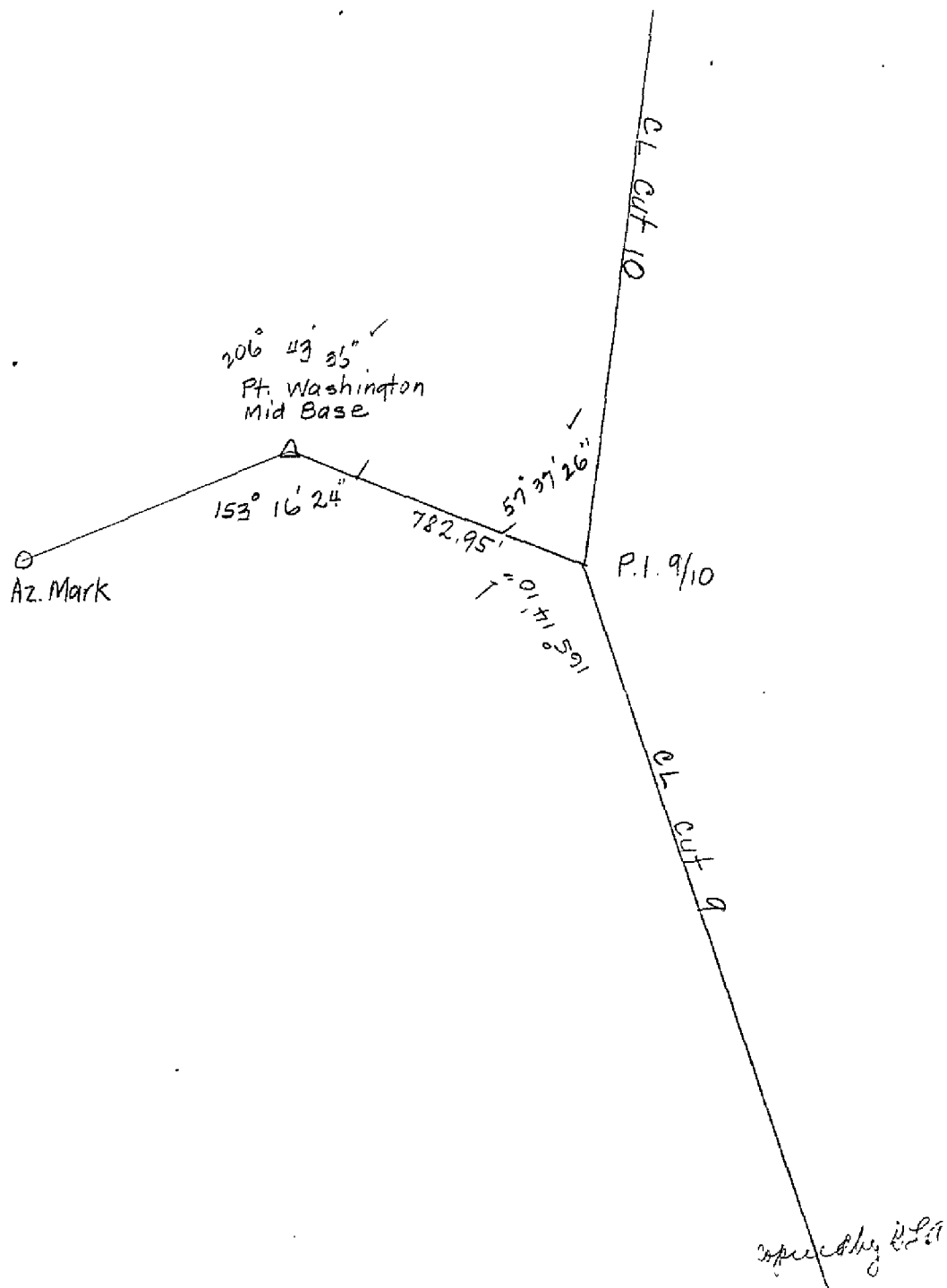
Original by 2/2/5

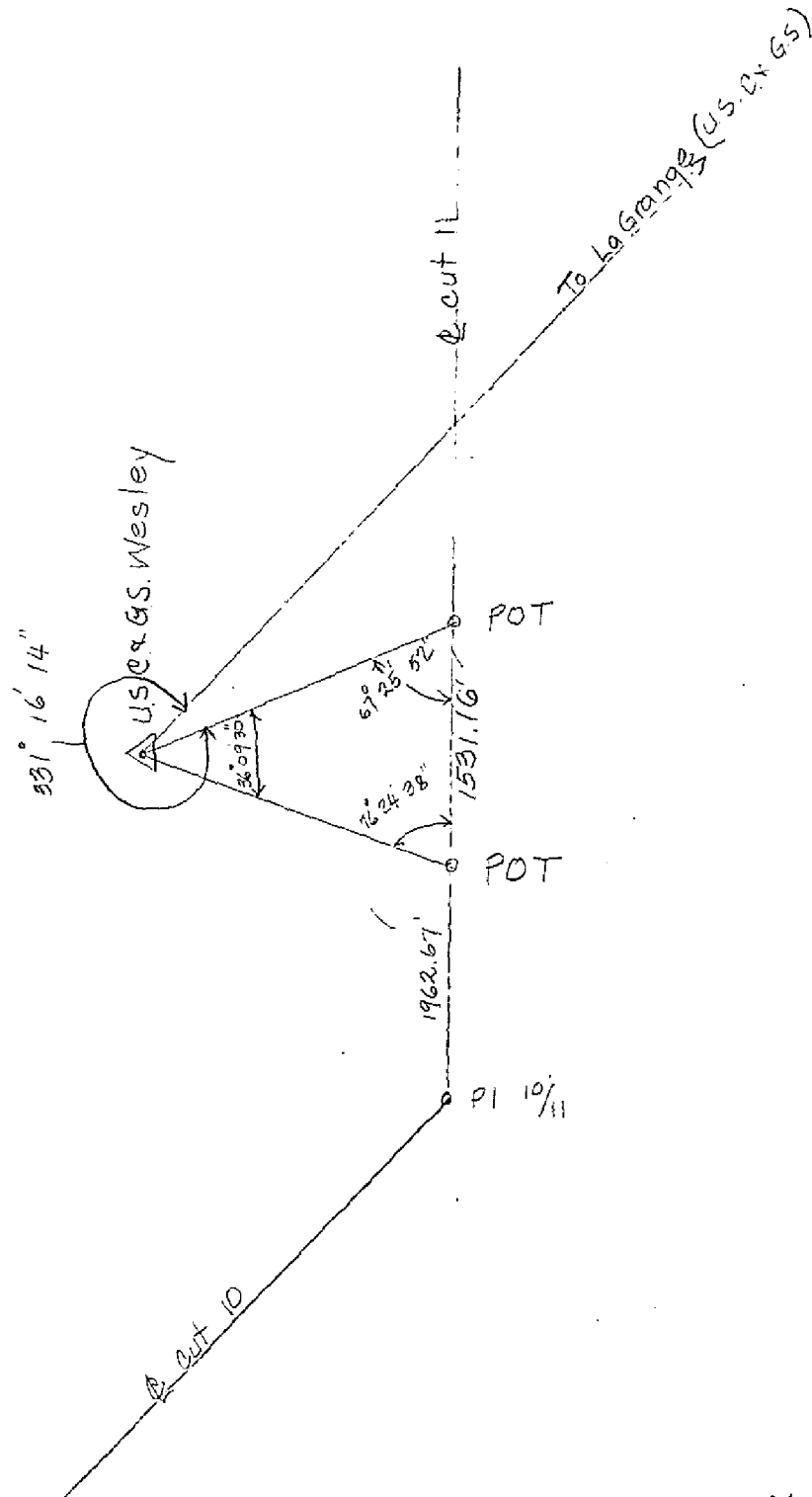
Copies of ORIGINAL TRAVERSE NOTES along center line of
waterway leading from West Bay to Choctawhatchee Bay.

Sheet
No. 5



Spd by S. L. A.

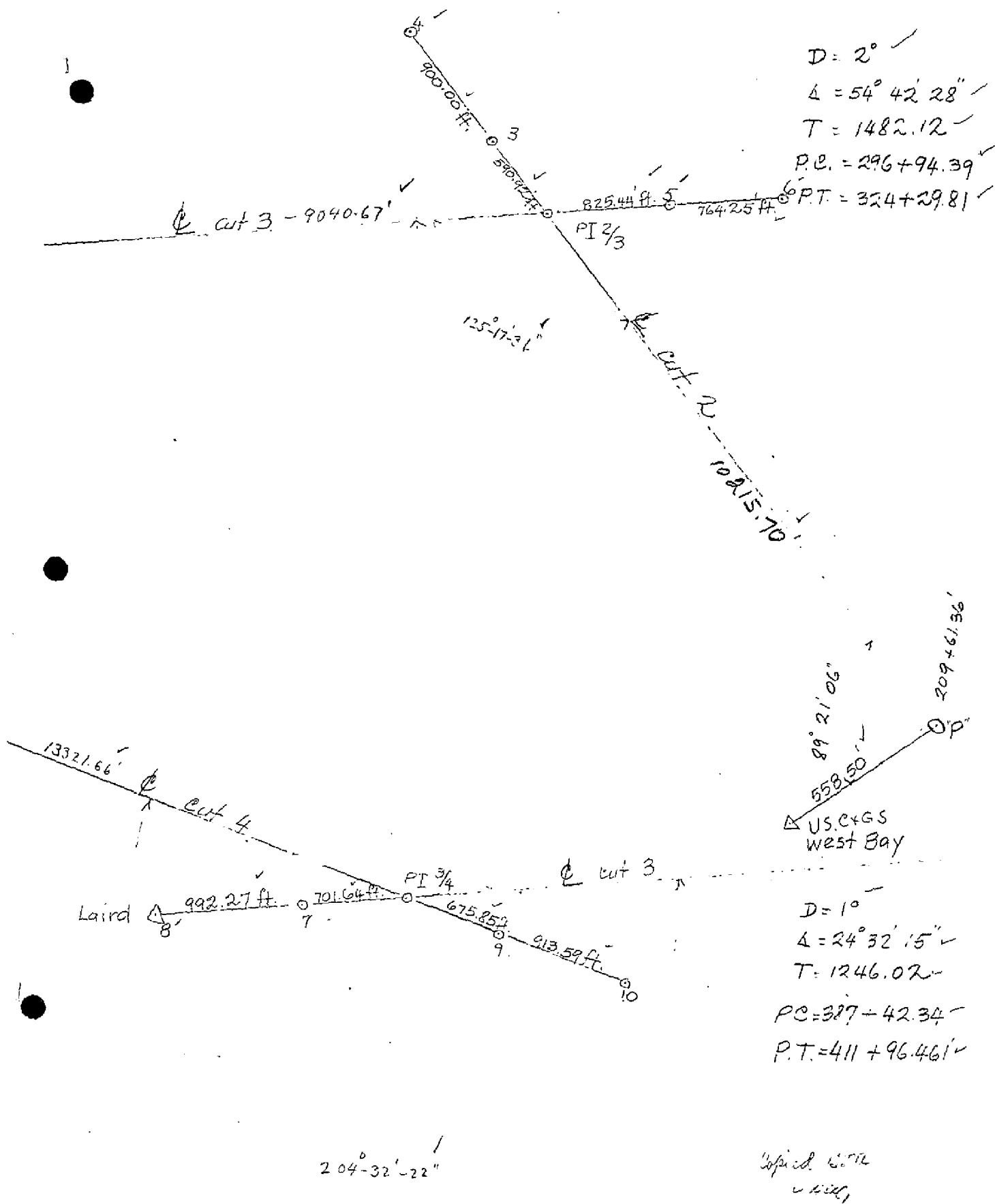




checked by YLA

Copies of FIELD SURVEY NOTES along center line of
waterway leading from West Bay to Choctawhatchee Bay.

Sheet
No. 1



Copies of FIELD SURVEY NOTES along center line of
waterway leading from West Bay to Choctawhatchee Bay.

Sheet
No. 2

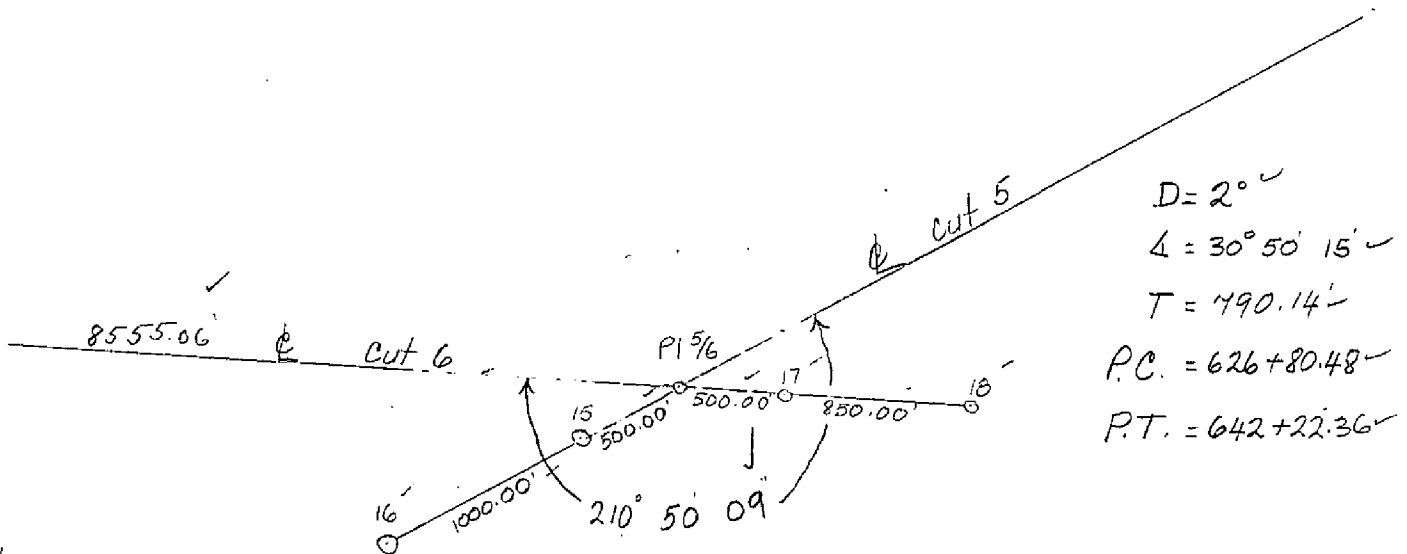
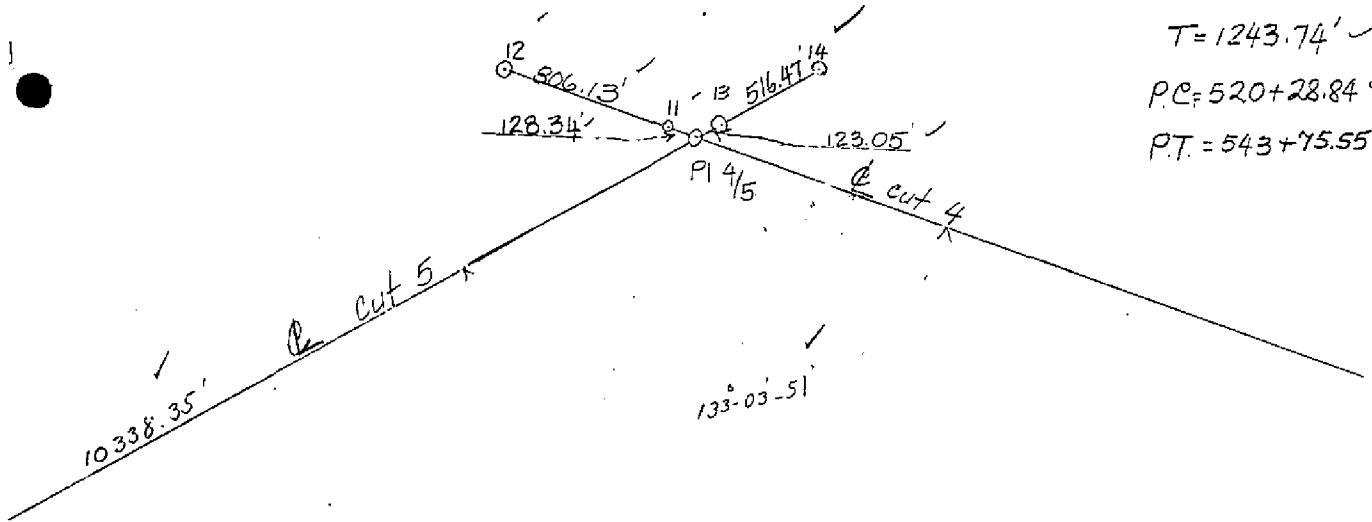
$$D = 2^{\circ} \checkmark$$

$$\Delta = 46^{\circ} 50' 03'' \checkmark$$

$$T = 1243.74' \checkmark$$

$$P.C. = 520 + 28.84 \checkmark$$

$$P.T. = 543 + 75.55 \checkmark$$



$$D = 2^{\circ} \checkmark$$

$$\Delta = 30^{\circ} 50' 15'' \checkmark$$

$$T = 790.14' \checkmark$$

$$P.C. = 626 + 80.48 \checkmark$$

$$P.T. = 642 + 22.36 \checkmark$$

Copied by *W. E. C.*
✓ H. C.

Copies of FIELD SURVEY NOTES along center line of
waterway leading from West Bay to Choctawhatchee Bay.

Sheet
No. 3

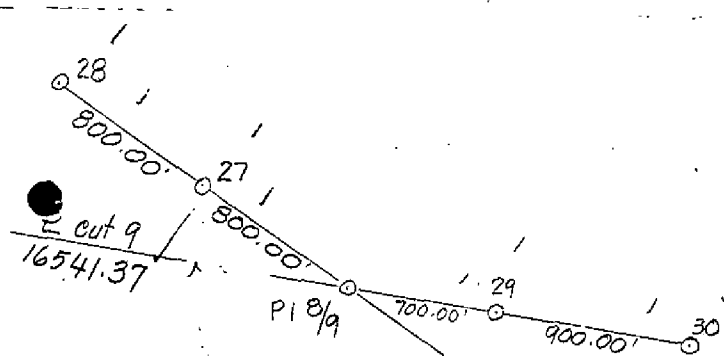
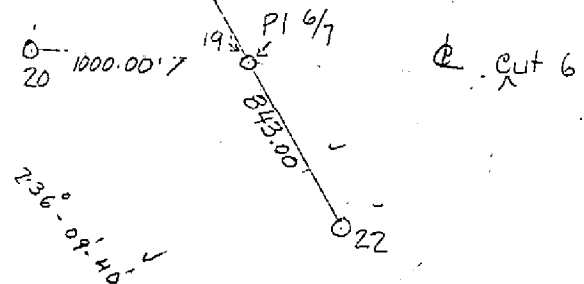
$$D = 1^\circ$$

$$\Delta = 56^\circ 09' 49''$$

$$T = 3057.02$$

$$P.C. = 689 + 30.87$$

$$P.T. = 745 + 47.22$$



$$D = 1^\circ$$

$$\Delta = 24^\circ 44' 26''$$

$$T = 1256.61$$

$$P.C. = 278 + 99.92$$

$$P.T. = 903 + 73.97$$

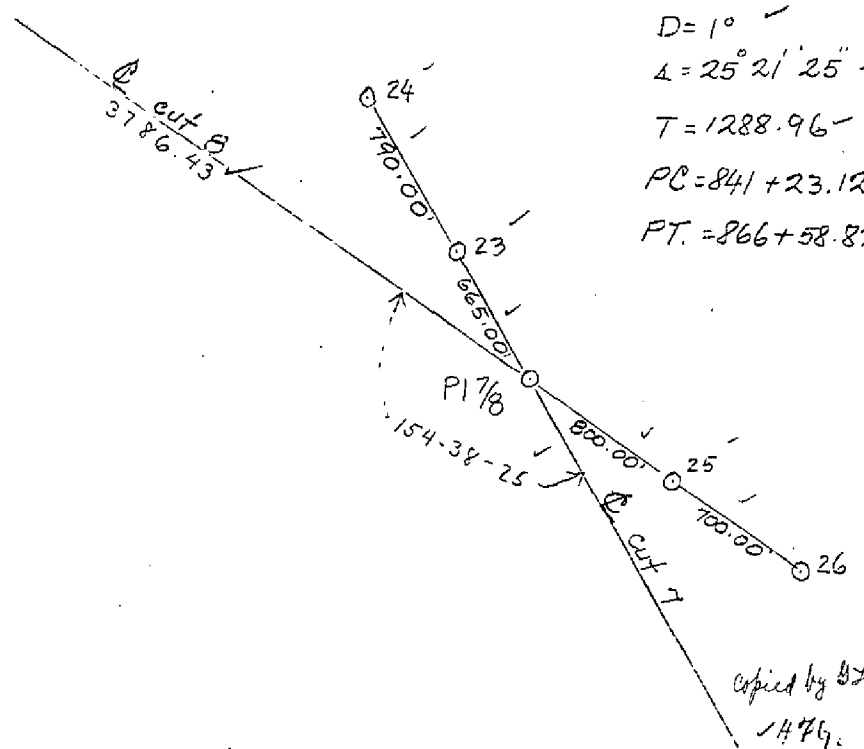
$$D = 1^\circ$$

$$\Delta = 25^\circ 21' 25''$$

$$T = 1288.96$$

$$P.C. = 841 + 23.12$$

$$P.T. = 866 + 58.82$$



copied by B26
1476

Copies of FIELD SURVEY NOTES along center line of waterway
leading from West Bay to Choctawhatchee Bay.

Sheet
No. 4

$$D = 1^{\circ}$$

$$\Delta = 42^{\circ} 52' 40''$$

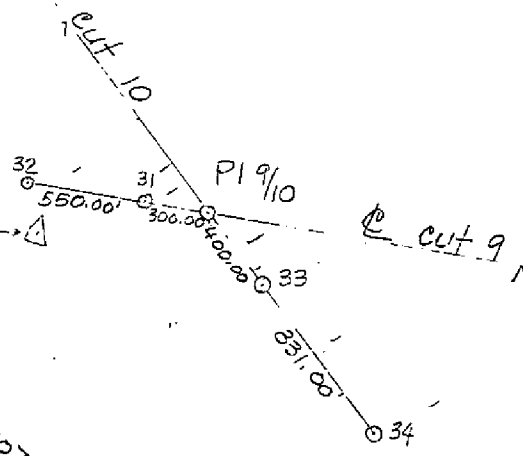
$$T = 2249.91'$$

$$P.C. = 1034+09.92$$

$$P.T. = 1076+97.70$$

Mid Base \rightarrow

$$222^{\circ} 52' 08''$$



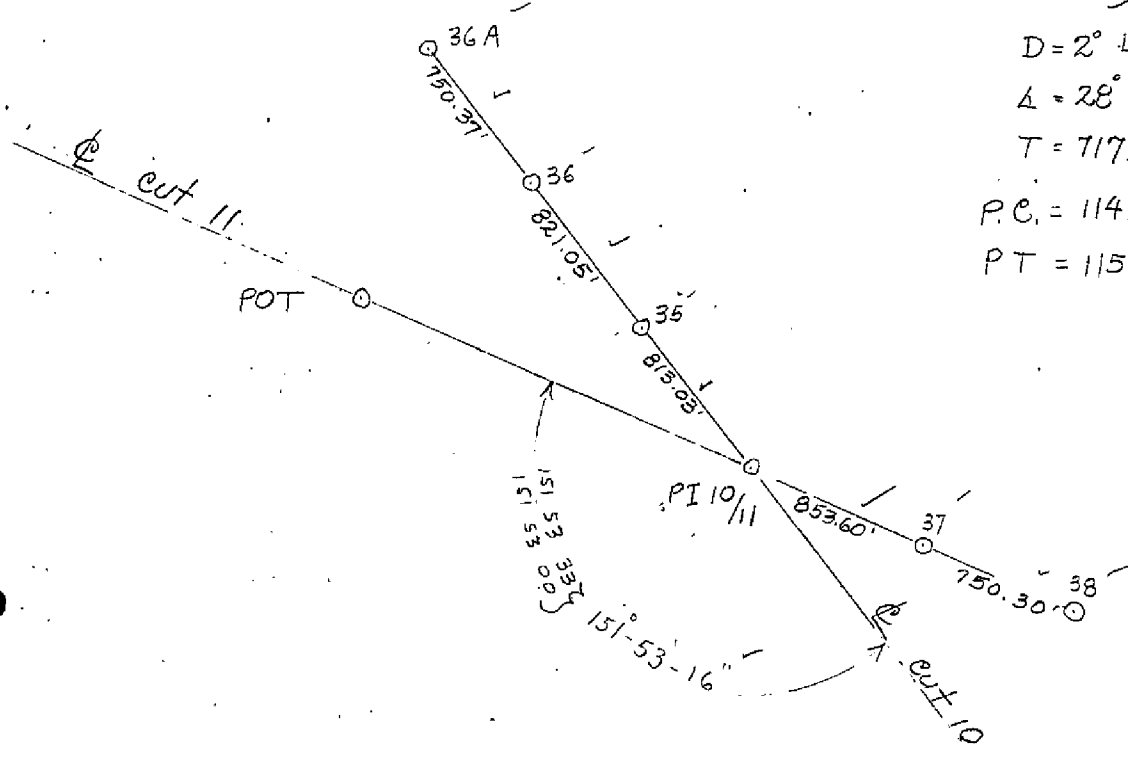
$$D = 2^{\circ} L$$

$$\Delta = 28^{\circ} 06' 27''$$

$$T = 717.15'$$

$$P.C. = 1141+12.53$$

$$P.T. = 1155+17.91$$



Atchafalaya
✓ 476

WAR DEPARTMENT
UNITED STATES ENGINEER OFFICE O-WEE

MOBILE, ALA.

May 22, 1939

Lieut. George L. Anderson,
Chief of Party,
U. S. Coast & Geodetic Survey,
Key West, Florida.

Dear Sir:

Receipt is acknowledged of your letter of May 15, 1939, requesting data with respect to any control established by this office along the Intracoastal Waterway between Choctawhatchee Bay and West Bay, Florida.

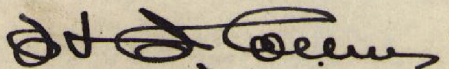
There are being forwarded to you today, under separate cover, eight prints of sheets 1 to 8, inclusive, of map titled "Waterway from Choctawhatchee Bay to West Bay, Florida, plan, in 15 sheets, dated December 30, 1935, file No. A-17-2", which show the location and the alignment of this canal, together with the various right-of-way and channel alignment monuments along the route. There is also inclosed a print of map titled "Waterway from Choctawhatchee Bay to West Bay, Florida, showing changes in alignment in West Bay and location of aids to navigation as installed by Lighthouse Department, in one sheet, dated June 14, 1939, file No. A-17-1-16", which shows a slight change of alignment that was made in the West Bay approach to the canal. *Bp. 31677-31684*
Bp. 31685

In addition to the monuments shown on these maps, there has been installed a base line along the canal which is used when cross sections are taken during dredging operations. The monuments on this base line are located by large stakes with the station number thereon, which can be seen from the canal.

If you desire any further information concerning the various monuments, or you would like to see any field notes of the surveys during the progress of your work, these may be examined at the U. S. Engineer Office at Panama City, Florida.

For the District Engineer:

Very truly yours,



H. I. Collins,
Principal Engineer (Civil).

Incls: (Under separate cover)

8 Prints of sheets 1 - 8, incl.,
File No. A-17-2.

1 Print of File No. A-17-1-16.

accompany
(attached to this report)

Remarks

Decisions

1	T6672 a	File Nos. 303861
2	T6672 a, b	
3	T6672 a	303861
4		
5		
6		
7		
8		
9		
10		
11		
12		
13		
14		
15		
16		
17		
18		
19		
20		
21		
22		
23		
24		
25		
26		
27		
M 234		

GEOGRAPHIC NAMES

Survey No. 6672 a,b

GEOGRAPHIC NAMES											
Survey No. 6672 a,b											
Name on Survey											
	A, On Chart No. 1264	B, On previous survey No.	C, On U. S. quadrangle Maps	D From local information	E On local Maps	F P. O. Guide or Map	G Rand McNally Atlas	H U. S. Light List	K		
<u>Peach Creek</u>	✓										1
<u>Intracoastal</u>											
<u>Intercostal Waterway</u>	✓										2
<u>Point Washington</u>	✓										3
											4
											5
											6
											7
											8
											9
											10
											11
											12
											13
											14
											15
											16
											17
											18
											19
											20
											21
											22
											23
											24
											25
											26
											27

Names Underlined in red approved

AVE On 2/17/40

M 234-10

Names underlined in red approved
 JTE on 2/17/40

Remarks.

Decisions

1	T6673 a	
2	T6673 b	302 857
3	T6673 b	302 858
4	T6673 b	302 858
5		
6		
7		
8		
9		
10		
11		
12		
13		
14		
15		
16		
17		
18		
19		
20		
21		
22		
23		
24		
25		
26		
27		

GEOGRAPHIC NAMES

Survey No. 6673a, b

GEOGRAPHIC NAMES										
Survey No. 6673a, b										
Name on Survey	<div>On Chart No. 1264</div> <div>On previous survey No.</div> <div>On U. S. quadrangle Maps</div> <div>From local information</div> <div>On local Maps</div> <div>P. O. Guide or Map</div> <div>Rand McNally Atlas</div> <div>U. S. Light List</div>									
	A,	B,	C,	D	E	F	G	H	K	
<u>Intracoastal</u>										
<u>Intercoastal Waterway</u>	1264									1
<u>West Bay</u>	184									2
<u>West Bay Creek</u>	184									3
<u>West bay</u> (village)	1263									4
										5
										6
										7
										8
										9
										10
										11
										12
										13
										14
										15
										16
										17
										18
										19
										20
										21
										22
										23
										24
										25
										26
										27
										28

Names unclassified or not approved

DATE 2/17/40

M 234

Names underlined in red approved

MTE

2/17/40

Remarks

Decisions

	File Nos.
1	302 858
2	302 857
3	302 858
4	302 858
5	302 857
6	302 857
7	302 857
8	302 858
9	302 857
10	
11	
12	
13	
14	
15	
16	
17	
18	
19	
20	
21	
22	
23	
24	
25	
26	
27	

GEOGRAPHIC NAMES

Survey No. 6674

GEOGRAPHIC NAMES		On Chart No.		On previous survey No.		On U. S. quadrangle Maps		From local information		On local Maps		P. O. Guide or Map		Rand McNally Atlas		U. S. Light List	
Name on Survey		A,	B,	C,	D	E	F	G	H	K							
<u>West Bay Creek</u>		1263															1
<u>West Bay</u>		1263															2
<u>Crooked Creek Point</u>					✓												3
<u>Crooked Creek</u>		1263															4
<u>Doll Bayou</u>		1263															5
<u>Poil Point</u>					✓												6
<u>Walsonham Point</u>		1263															7
<u>Goose Point</u>					✓												8
<u>Breakfast Point</u>		1263															9
																	10
																	11
																	12
																	13
																	14
																	15
																	16
																	17
																	18
																	19
																	20
																	21
																	22
																	23
																	24
names underlined in Red																	25
app'd for this survey																	26
by HHC 2/17/40																	27
																	M 234 VR

MEMORANDUM

IMMEDIATE ATTENTION

SURVEY
DESCRIPTIVE REPORT
PHOTOSTAT OF

~~No. 11~~

No. T 6672a, b
6673a, b
6674

{ received
registered
verified
reviewed
approved

This is forwarded in order that your attention may be directed to the matters as indicated below. Please initial in column 3 as an acknowledgement that your attention has been thus directed. The complete original records are available if desired. If you cannot give this your immediate attention, please initial, note, and forward to the next section marked, calling for the records at your convenience.

ROUTE		Initial	Attention called to
20			
22			
24			
25			
26			
30			
40			
62			
63			
82			
83			
88			
90			

RETURN TO

82	T. B. Reed
----	------------

✓ JBR

DIVISION OF CHARTS

Section of Field Records

REVIEW OF TOPOGRAPHIC SURVEYS NOS. 6672a&b, 6673a&b, and 6674
FIELD NOS. G,H,J,K, & L

Florida, Choctawhatchee Bay - West Bay, Intracoastal Waterway
Surveyed in July - August 1939, Scale 1:10,000
Instructions dated April 13, 1939 (G. L. ANDERSON)

Revision Survey

Plane Table Survey

Aluminum Mounted

Chief of Party - George L. Anderson.
Surveyed by - G. L. Anderson.
Inked by - G. L. Anderson.
Reviewed by - Harold W. Murray, May 16, 1940.
Inspected by - H. R. Edmonston.

1. Purpose of Survey.

The purpose of this survey was to survey the Intracoastal Waterway from Choctawhatchee Bay to West Bay and establish signal control where necessary for hydrographic parties.

2. Junctions with Contemporary Surveys.

- a. The junctions of T-6672a & b, T-6673a & b, and T-6674 of 1939 are satisfactory.
- b. The junction of T-6672a (1939) and 6671b (1939) at the east end of Choctawhatchee Bay is satisfactory.
- c. The junction of T-6674 (1939) with T-5521 (1934) and T-5523 (1934) at the west end of West Bay is satisfactory.

3. Shoreline Differences.

The dredging of the waterway was a project begun subsequent to the previous 1934 topographic surveys T-5523, T-5524 and T-5525, covering this area. Important shoreline changes other than those due to the dredging of the waterway in the inland area occur where the waterway follows in whole or in part established stream patterns. Changes noted in the latter areas are as follows:

- a. T-6672a (1939) and T-5525 (1934).

Shoreline differences occur at the mouth of Peach Creek and also to the northwestward.

No vertical clearance is given for the telephone line crossing the Intracoastal Waterway in Lat. 30° 21', Long. 86° 05'.

b. T-6673b (1939) and T-5523 (1934).

Shoreline differences on this sheet are noted throughout the entire common area.

c. T-6674 (1939) and T-5523 (1934).

Considerable shoreline changes are noted along the north shore of West Bay Creek. The dock in Lat. 30° 17', Long. 85° 51', is now in ruins.

The inked topographic detail on the present survey supersedes the 1934 surveys T-5523, T-5524 and T-5525.

4. Comparison with Chart 1263 (New Print dated Mar. 9, 1940).
and Chart 1264 (New Print dated May 5, 1939).

a. Topography.

Topography shown on the chart originates with surveys discussed in previous paragraphs of this review and blueprints 31677 to 31684 of 1935-36, and blueprint 31685 of 1938. The present survey supersedes these blueprints.

b. Aids to Navigation.

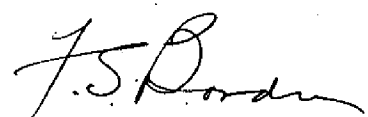
Aids to navigation at the entrance to the Intra-coastal Waterway in Choctawhatchee Bay and in West Bay were considered in the reviews of the hydrographic sheets covering those areas.

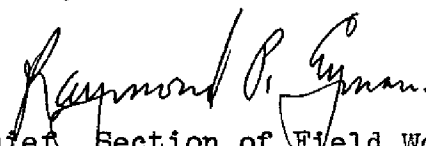
c. Magnetic Meridian.


The magnetic meridian was determined at several points along the shoreline. The values obtained agree within 2 degrees with the charted value.

Examined and approved:


T. B. Reed,
Chief, Section of Field Records.


J. S. Borden,
Chief, Division of Charts.


Raymond P. Gynan,
Chief, Section of Field Work.


G. H. Rude,
Chief, Division of H. & T.