

8224

8224

Form 504	
U. S. COAST AND GEODETIC SURVEY	
DEPARTMENT OF COMMERCE	
DESCRIPTIVE REPORT	
Type of Survey <u>Air Photo Compilation</u>	
Field No. _____	Office No <u>T-8224</u>
LOCALITY	
State <u>South Carolina</u>	
General locality <u>Williamsburg County</u>	
Locality <u>Trio</u>	
1943	
CHIEF OF PARTY	
<u>Lieut. Comdr. F. S. Gallen</u>	
<u>Lieut. Comdr. Kenneth G. Crosby</u>	
LIBRARY & ARCHIVES	
DATE <u>July 1943</u>	

DATA RECORD

T-8224

Quadrangle (II): Trio

Project No. (II): CS-285

Field Office: Myrtle Beach, S.C.

Chief of Party: F. L. Gallen.

Compilation Office: Tampa, Fla.

Chief of Party: Kenneth G. Crosby

Instructions dated (II III): 7-15-42

Copy filed in Descriptive
Report No. T- (VI)Completed survey received in office: *July 19, 1943*Reported to Nautical Chart Section: *July 20, 1943*Reviewed: *Nov. 2, 1943*

Applied to chart No.

Date:

Redrafting Completed: *Jan. 10, 1944*Registered: *5/46*

Published: 1944

Compilation Scale: 1:20,000

Published Scale: 1:31,680

Scale Factor (III): 1.00

Geographic Datum (III): N.A. 1927

Datum Plane (III): M.S.L.

Reference Station (III): Trio 1934

Lat. $33^{\circ}-28'-43.428''$ (1337.834^M)
Long. $79^{\circ}-41'-07.140''$ (184.374^M)
~~Unadjusted~~State Plane Coordinates (VI): *South Carolina So. State Grid*X = *2,400,882.15 FT.*Y = *601,136.73 FT.*

Military Grid Zone (VI)

Zone "B"

PHOTOGRAPHS (III)

<u>Number</u>	<u>Date</u>	<u>Time</u>	<u>Scale</u>	<u>Stage of Tide</u>
8395	4-6-42			Inshore sheet..
8396	"			
8299	"			
8400	"			

Tide from (III): No Tide (inshore sheet)

Mean Range:

Spring Range:

Camera: (Kind or source) U. S. Coast & Geodetic Survey 9 lens
(Focal length $8\frac{1}{4}$ inches)

Field Inspection by: G. B. Wooley & G. Bowker date: Mch-Apr. 1943

Field Edit by: *D. Flippo* date: *August, 1943*

Date of Mean High-Water Line Location (III):

Projection and Grids ruled by (III) J.O.N. date: 1-16-43

" " " checked by: J.O.N. date: 1-16-43

Control plotted by: W. E. Snyder, Photo Aid date: 1-23-43

Control checked by: V.F. Simmons, Photo Aid date: 1-23-43

Radial Plot by: Tampa office personnel date: 2-16-43

" " re-run " 6-14-43

Detailed by: M. Rutkin, Jr. Engr. Draftsman date: Apr-June 1943

Reviewed in compilation office by: A. L. Kidwell, Jr. Topo Engr. date: July 1943

J.H.S. Billmyer, Asst. Photo Engr.

Elevations on Field Edit Sheet

checked by: *D. Flippo*

date: *Aug 16, 1943*

STATISTICS (III)

Land Area (Sq. Statute Miles): 62.2 sq. statute miles

Shoreline (More than 200 meters to opposite shore): None

Shoreline (Less than 200 meters to opposite shore): 21 Miles

Number of Recoverable Topographic Stations established:

Number of Temporary Hydrographic Stations located by radial plot:

Leveling (to control contours) - miles: 50

Roman numerals indicate whether the item is to be entered by,

(II) Field Party, (III) Compilation Party, or, (VI) the Washington Office.

When entering names of personnel on this record give the surname

and initials (not initials only).

Remarks:

General Procedure in the Production of Topographic Quadrangles for the War Department

This quadrangle, together with similar adjoining maps produced under Project C.S. 285, was prepared by the Coast and Geodetic Survey for the War Department under "General Specifications for War Department Mapping Program" issued about December 1941, in which is incorporated the "Standard of Accuracy for a National Map Production Program" issued by the Bureau of the Budget under date of June 10, 1941.

The general procedure in the production of this and the adjoining quadrangles was:

FIELD SURVEYS

Aerial photography with the Coast and Geodetic Survey nine-lens camera, with airplane and flight crew furnished by the U. S. Coast Guard. The photographs were taken to the scale of 1:20,000.

Ground inspection of the photographs for identification of control points, and classification and clarification of planimetric details on the photographs.

Contouring by planetable directly on the photographs. Supplementary vertical control was established by means of an extensive subordinate level net, furnishing unmarked elevations at road intersections, drive-ways, and numerous other points identifiable on the photographs.

COMPILATION OF MANUSCRIPT

Compilation on the map manuscripts by radial plot methods (celluloid hand templates) of all planimetry and contours. These manuscripts were drawn on the scale of 1:20,000 on celluloid sheets on which polyconic projections had been ruled with the Projection Ruling Machine in the Washington Office. Compilation was accomplished in the ~~Baltimore~~ Tampa Photogrammetric Office.

FIELD EDIT

Comparison of a copy of the manuscript with the ground. This included inspection for completeness and accuracy as well as the location by planetable methods of additional details, checking of nautical and aeronautical aids to navigation, etc.

Accuracy Tests - Application of systematic horizontal and vertical accuracy tests to check the maps for conformity with the specifications. These tests consisted of comparison of the map position and elevation of selected random points with the true position and elevation as independently determined by standard survey methods.

PROCESSING IN THE WASHINGTON OFFICE

Review - Examination of the manuscript for accuracy and completeness of compilation and compliance with specifications, correcting where necessary; addition of military and state grids and other special features; and verification of the general adequacy of the manuscript as a basis for the production of a finished map.

Drafting and Reproduction - Preparation of smooth color separation drawings on 1:20,000 scale on metal-mounted "blue-line" copies of the manuscript. From these drawings, negatives and printing plates were prepared for reproduction of the finished map on the scale of 1:31,680 or 1:25,000.

FIELD INSPECTION REPORT
QUADRANGLE T-8224
PROJECT CS-285
F. L. GAILLEN, CHIEF OF PARTY.

1. The southern part of the quadrangle is drained in a southeasterly direction by Cedar Creek. The northern part drains in an easterly direction into Johnson Swamp and then into the Black River. Extensive swampy areas are found in this Quadrangle and are covered with a dense growth of cypress and gum. During an extremely dry season most of the swamps are comparatively dry.

State Route No. 515 follows a straight course from Andrews in an east-west direction through Trio and Blakely. The road is made on an abandoned railroad grade. Traces of another road are parallel and just north of the highway shown on the photograph. This road was used when the railroad was in existence and has since then been abandoned in most sections. This route is paved with a macadam paving to a point adjacent the Earle Fire Tower. The remainder of the road is of good earth structure and is well maintained. Most of the sand clay roads are in fair condition in this Quadrangle.

Some farming is carried on along Route No. 515 but in general the Quadrangle is sparsely populated. The area south of Route No. 515 has very few farms because of the swampy areas during wet seasons.

2. See the report for Quadrangle 8221.

3. Some areas with vegetation which usually show as a light tone on the photographs show as a dark tone. This was found to be grassy areas burned over by forest fires. Since the photographs were taken many months ago it was necessary to inquire from the local inhabitants to verify the time of the forest fires. For additional information see the report for Quadrangle 8238.

4-5. See the report for Quadrangle 8221.

6. See the report for Quadrangle 8238.

7-12. Does not apply to this Quadrangle.

13. No landing field or aeronautical aids were found in this Quadrangle.

14. See the report for Quadrangle 8238.

15. The dimensions and load limit of the bridges have been indicated on the photographs but they have not been classified.

16. See the report for quadrangle 8238.

17. See the report for Quadrangle 8226.

18. Geographic Names is the subject of separate report for this project. ✓

19. The junction with Quadrangle 8223 to the east, Quadrangle 8229 to the south are both on overlapping photographs. The junctions between the photographs were checked in the field and should be satisfactory. There is no junction with any modern survey to the west and north.

Submitted by,

Glen B. Woolley
Glen B. Woolley,
Sr. Engineering Aid.

Approved and forwarded:

F. L. Gallen
F. L. Gallen,
Chief of Party.

COMPILATION REPORT
TO ACCOMPANY
SHEET NO. T-8224

Control

All Triangulation and traverse stations which fall on the sheet could be "held to" on the radial plot.

In addition to the triangulation and traverse control, there were available sixty geographic positions furnished by the U. S. Geological Survey of identifiable points in the area. About 40% of the points agreed with the radial plot and were used in detailing.

Radial Plot

A discussion of the main radial plot is incorporated in the compilation report for sheet T-8222.

Detailing

The Photographs which were used for detailing were clear and the scale was fair.

In general, the field inspection was satisfactory, but in some cases, as in vegetation, small road, and stream classification, the Draftsman had to use his own judgement.

Satisfactory junctions were made with the adjoining quadrangles with the exception of the junction with T-8229 on the South. This sheet had been forwarded to the Washington office before the radial plot was revised and there are probably some slight discrepancies along the junction line. This junction should be checked and corrected by the Washington office.

Supplemental Data

No graphic control surveys by this Bureau, or maps and plans by other organizations were used to supplement the photographs in the detailing.

Landmarks and Aid to Navigation.

Earle Fire Lookout Tower is directly over Traverse station TT-46-PA, 1935, (U.S.G.S.). This tower should be investigated by the field edit party and if suitable for a landmark, forms 524 and 567 should be submitted to the Washington office.

The geographic position of TT-46-Pa, 1935 is:

Lat: 33° 28' 05" 83 (179.6m)

Long: 79° 38' 39" 52 (1020.5)

Comparison with existing Topographic Quadrangle

No topographic quadrangle sheets were available in the Tampa office with which to make a comparison with T-8224.

Comparison with Nautical Charts

The area covered by this sheet falls too far inland to be covered in detail by any of the published nautical charts.

Respectfully submitted,

Morris Rutkin
Morris Rutkin ¹⁹⁵
Jr. Eng. Draftsman.

Forwarded by:

Kenneth G. Crosby
Kenneth G. Crosby
Chief of Party

FIELD EDIT REPORT
T-8224
PROJECT CS-285

46. The field edit was done by visual inspection, making all additions and deletions on the map manuscript, and transferring all the detail to a smooth copy while inking.

The following color scheme was used:

FEATURES	COLORS
Additions, Bench marks, wye level elevations and crosses	RED
Deletions	GREEN
Drainage features	BLUE
Contours	BROWN
Civil Boundaries	VIOLET

47. The position and amount of detail on this map manuscript is believed to be complete and adequate.

48. A horizontal accuracy test was run in this Quad.
Test showed plot satisfactory except for two houses + a bridge. Replotting, radially, corrected the errors. (Notes made in Horizontal Accuracy Test No. 10, Proj. Vertical accuracy tests are the subject of a special C.S. 285, Quad #8224, report for Project CS-285.
Satisfactory. Vertical accuracy test has been run in this quad, during review.

Submitted by

Donald G. Flippo
Donald G. Flippo
Engineering Aid

Approved and Forwarded

F. L. Gallen
F. L. Gallen
Chief of Party

826-ROR

September 25, 1943

To: Mr. Louis Levin
U. S. Coast and Geodetic Survey
P. O. Box 1436
Myrtle Beach, South Carolina

From: The Director
U. S. Coast and Geodetic Survey

Subject: Field Edit of Quadrangles T-8224 and
T-8229, Project 285

With reference to the letter from this office dated September 21, 1943 regarding the boundary line between Williamsburg and Georgetown Counties, the same question applies to that section of the boundary crossing quadrangles T-8224 and T-8229. Please make the necessary investigation and note the correct position of the boundary on the enclosed ozalid prints.

With further reference to the enclosed ozalid prints of T-8224 and T-8229, there is a difference of about one half mile in the position of the boundary line Anderson and Buttons Townships at the junction of the two quadrangles. If the short section of that line shown on T-8229 is correct, the entire line crossing T-8224 will need to be swung southward.

(Signed) C. L. GARNER

Enclosures

Acting Director

CC: Lieut. Comdr. Callen

28K7K
726
POST-OFFICE ADDRESS:

P. O. Box 1436 Myrtle Beach, S. C.

TELEGRAPH ADDRESS:

EXPRESS ADDRESS:

Benson

DEPARTMENT OF COMMERCE

U. S. COAST AND GEODETIC SURVEY

Sept. 29, 1943

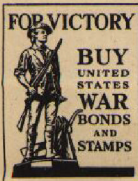
To: The Director
U. S. Coast and Geodetic Survey
Washington D. C.

From Louis Levin
U. S. Coast and Geodetic Survey
Myrtle Beach, S. C.

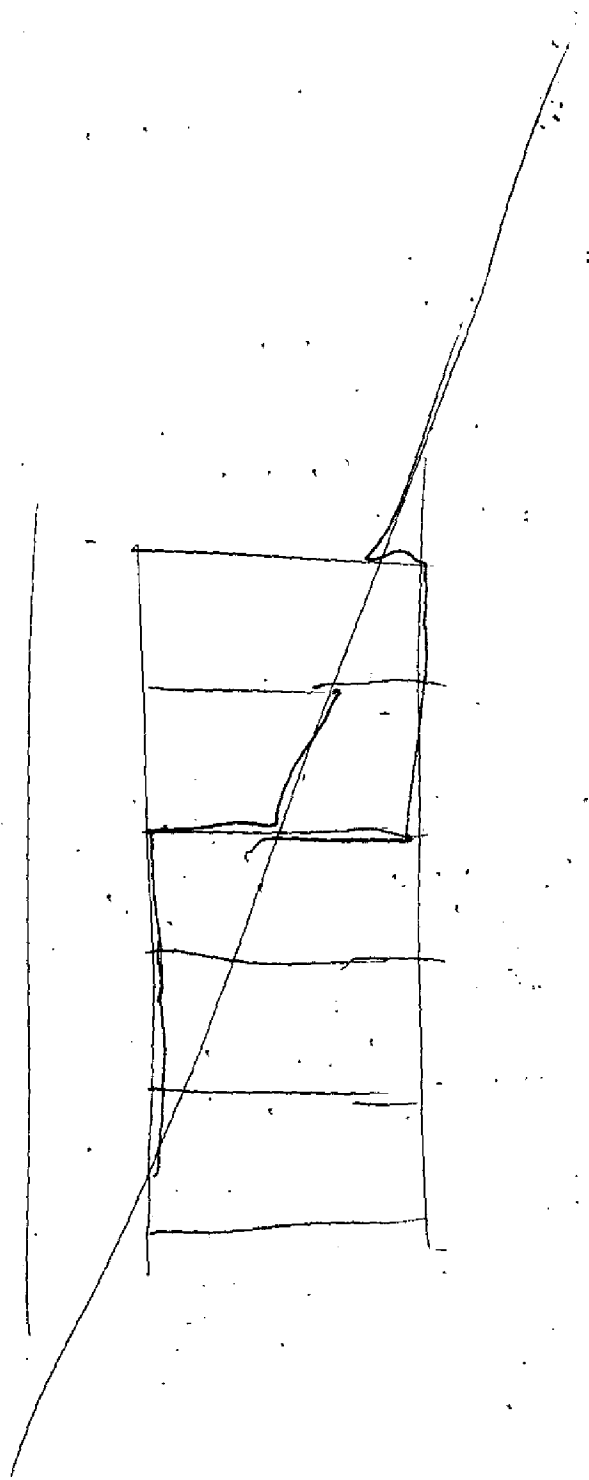
Subject: Field Edit Of Quadrangles T-8224 and T-8229

In answer to your letter inquiring about the position of the Williamsburg -Georgetown County boundary line, the position of the line as shown on the field edit sheet was taken from a revised edition (1940) of the State Highway Dept. Map of Williamsburg County. However since the receipt of your second letter pertaining to this boundary I have spoken to Mr.H. S. Parsons, Chairman, Board of County Commissioners, Georgetown County. His version is that it makes no difference which line is used since it does not involve any valuable property and also that an act of legislature is not necessary to move the county line. He has recommended, therefore, that the boundary line be shown on our maps as it appears on the revised map of Williamsburg County, which is the way it has been shown on the original field edit sheet.

The position of the boundry line of Anderson and Sutton Townships has been rechecked and it is believed that the line shown on T- 8229 is incorrect and should be deleted. This short section of the political boundary was taken from a supposedly matched addition to the county map. However it appears that this portion is entirely out of porportion and does not check with the larger section of the map.



Louis Levin
Photogrammetric Aid



GEOGRAPHIC NAMES

Survey No. T-8224

TRIO quadrangle

1 Name on Survey

	On Chart No.	On previous survey No.	On U. S. quadrangle Maps	From local information	On local Maps	P. O. Guide or Map	Rand McNally Atlas	U. S. Light List	
A,	B,	C,	D	E	F	G	H	K	
✓ Williamsburg County	✓	✓							1
✓ Georgetown County		✓							2
✓ Andrews (Black River)	Twp 4		(Georgetown Co.)	✓					3
✓ Sampit (Gourdin)	Twp 2		"	✓					4
✓ Suttons Twp 4	✓		(Williamsburg Co.)						5
✓ Anderson Twp 5	✓		"						6
✓ State Highway No. 511	✓								7
✓ " " 515	✓								8
									9
✓ Brunson Branch	shown in T-8229								10
✓ Long Branch	✓								11
✓ Cross Bay Ridge	✓								12
✓ Cedar Creek	✓								13
✓ Cedar Creek Bay	✓								14
✓ Mill Creek	✓								15
✓ Mill Creek Bridge	✓								16
✓ Wee Tee Bridge	✓								17
✓ Wee Tee Branch	✓								18
✓ Suttons	✓								19
✓ Martin Corner	✓								20
✓ Martin Corner Road	✓								21
✓ Suttons Road	✓								22
✓ Wee Tee Bay	✓								23
✓ Rice Field Bay	✓								24
✓ Camp Pond Bay	✓								25
✓ June Branch Road	✓								26
✓ Blakely	✓								27

T-8224

no. 1

Remarks

Decisions

1		
2		
3		
4		
5		
6		
7		Road Maps
8		"
9		
10		333796
11		"
12		"
13		"
14		"
15	Pending with U.S.G.B.	333797
16		"
17		"
18	Pending with U.S.G.B.	333796
19		333797
20		334797
21		"
22		"
23		"
24		"
25		"
26		"
27		"

T-8224

	Remarks	No. 2 Decisions
1		334797
2		"
3	Not shown - (no bridge or stream shown) on manuscript	"
4		334796
5		"
6		"
7		"
8		"
9		334795
10		334796
11		"
12	shown in control type	"
13		"
14		"
15		"
16		"
17		334795
18		334796
19		"
20		"
21		"
22		"
23		"
24		"
25		"
26		"
27		333796

GEOGRAPHIC NAMES

Survey No. T-8224

GEOGRAPHIC NAMES												
Survey No. T-8224												
		On Chart No.	On previous survey No.	On U. S. quadrangle Maps	From local information	On local Maps	P. O. Guide or Map	Rand McNally Atlas	U. S. Light List			
2	Name on Survey	A.	B.	C.	D	E	F	G	H	K		
✓	Spring Valley Swamp	✓									1	
✓	Trio	✓									2	
X	Trio Bridge	✓									3	
✓	Trio Road	✓									4	
✓	Faircloth Plantation	✓									5	
✓	Faircloth Road	✓									6	
✓	Tisdale	✓									7	
✓	Juniper Run	✓	(very little of it on this quad.)									8
✓	Murray Swamp	✓									9	
✓	Murray Swamp Bridge	✓									10	
✓	Earle	✓									11	
✓	Earle Forest Fire Lookout Tower	✓									12	
✓	Earle Road	✓									13	
✓	Sportsman Pond	✓									14	
✓	Aimwell Road	✓									15	
✓	Aimwell Bridge	✓									16	
✓	Johnsons Swamp	✓									17	
✓	Johnsons Swamp Road	✓									18	
✓	Flat Swamp	✓									19	
✓	Alligator Bay	✓									20	
✓	Log Branch	✓									21	
✓	Log Branch Bridge	✓									22	
✓	Fryerson Bridge	✓									23	
✓	Mill Branch	✓									24	
✓	Mill Branch Bridge	✓									25	
✓	Oak Ridge	✓	(settlement)									26
✓	Oak Ridge Bay	✓									27	

M 234

T-8224

No. 3

Remarks

Decisions

1		334796
2		"
3		"
4		
5		
6		
7		
8		
9		
10		
11		
12		
13		
14		
15		
16		
17		
18		
19		
20		
21		
22		
23		
24		
25		
26		
27		

GEOGRAPHIC NAMES

Survey No. T-8224

3	Name on Survey	A,	B,	C,	D	E	F	G	H	K	
	<u>Big Ridge</u>	✓									1
	<u>Cook Corner</u>	✓									2
	<u>Cook Road</u>	✓									3
	<u>Leneuds Ferry Road</u>	✓									4
											5
											6
											7
											8
											9
											10
											11
											12
											13
											14
											15
											16
											17
											18
											19
											20
											21
											22
											23
											24
											25
											26
											27

Names underlined in red approved
by L. Heck on 11/30/43

M 234

Names underlined in red approved
by L. Heck on 1/30/43

RECORDS

Between January, 1942 and July, 1944, this Bureau completed 323 quadrangles. These maps have been published, or are in the process of being published on scales of 1:31,680 or 1:25,000. This series of quadrangles includes a land area of approximately 15,000 square miles. Incident to this work, a considerable volume of survey records and data has accumulated which will be filed for future reference. This material is filed as follows:

Registered and Filed in the Vault

Cloth-mounted copy of the published quadrangle.
published quadrangle at 1:20,000 scale
Black and white cloth-mounted copy of the map manuscript. This copy is filed to preserve original survey detail shown on the manuscript at 1:20,000 scale which may not have been shown on the published sheet. For ~~political boundaries~~, woodland, ~~marsh~~, and ~~swamp limits~~, refer to the published quadrangle for the finally adopted positions.

Descriptive Report.

Division

Filed in the Photogrammetric Section--Surveys-Branch

Field inspection photographs.

Contoured photographs (on which planetable contouring work was performed.)

Field edit sheet.

Descriptions of recoverable topographic stations (Form 524), filed in Reviewing-Unit Section.

Supplementary traverse and level records.

Field notes, computations, lists of positions, and tabulations of results of horizontal and vertical accuracy tests.

Reproduction proof.

Correction sheet (copy of quadrangle showing in red changes to be made when next printed.)

Check lists of work performed on each sheet in the Washington Office during review, drafting, edit, and reproduction.

Original celluloid manuscript.

Copies of specifications and all instructions
to field parties and field offices.

Filed in Reproduction Branch

Glass negatives of the color separation drawings.

Filed in the Library

~~Special report on field work by Commander K. T.
Adams, 1944.~~

Special report on office work by B. G. Jones, 1944.

Season's report on field work by Commander F. L.
Gallen, 1944.

Season's report on field work by Commander R. L.
Schoppe, 1944.

Delivered to the Army Map Service in accordance
with the contract

Film negatives and film positives of the color
separation drawings.

All color separation drawings.

~~Original celluloid manuscript.~~

A correction sheet consisting of a copy of the
first edition of the quadrangle with notes in red
indicating changes desirable at the next printing.

DIVISION OF CHARTS

SURVEYS BRANCH

REVIEW OF AIR PHOTOGRAPHIC SURVEY T-8224

TRIO QUADRANGLE

This quadrangle manuscript has been examined for completeness, accuracy, and conformity with the specifications. It is adequate for smooth drafting, reproduction and publication. Revisions found to be necessary in this office are discussed on the next page.

Horizontal and Vertical Accuracy

A horizontal accuracy test was run in this quadrangle. Test showed the plot to be satisfactory, except for two houses and a bridge. Replotting radially corrected the errors.

A vertical accuracy test was run in this quadrangle and was satisfactory. For reports on these tests see the files, under Previous Surveys Project 285, in the Division of Photogrammetry.

This manuscript has been compared with the following previous topographic surveys of this Bureau and other agencies. This map is satisfactory to supersede the previous surveys over the common area.

There are no previous topographic surveys in this area.

Comparison with Nautical Charts Nos.

The manuscript has not been applied to the charts at the date of this review. The following comments are pertinent to the compilation and correction of nautical charts:

There are no nautical charts in this area.

The following revisions of the map manuscript were found to be necessary and were accomplished as a part of this review:

Only changes of a minor nature were necessary during the review of this map manuscript.

Reviewed Sept. 18, 1943 By Willis W. St. John
under direction of D. H. Benson (per W.M.)

Inspected by B. G. Jones B.G. Jones 5/46

Examined and approved:

K.T. Adams
Chief, ~~Surveys Branch~~
Division of Photogrammetry

~~Chief, Topography Section~~

Robert W. Gray
Chief, Div. of Charts
Nautical Chart Branch
Raymond B. Egan
Chief, Div. of Coastal
Surveys