

# 8236

Diag'd. on Diag. Ch. No. 1238-2

Form 504

## U. S. COAST AND GEODETIC SURVEY

DEPARTMENT OF COMMERCE

### DESCRIPTIVE REPORT

Type of Survey Air Photo. Compilation

Field No. \_\_\_\_\_ Office No. T-8236

#### LOCALITY

State South Carolina

General locality Charleston County

Locality McClellanville

#### WAR MAPPING PARTY NO. 1

194 3

CHIEF OF PARTY  
*F. L. Gallen, W. D. Patterson, and*  
Lieut. Comdr. Kenneth G. Crosby

#### LIBRARY & ARCHIVES

DATE March 14, 1946

# 8236

## DATA RECORD

T- 8236

Quadrangle (II): McClellanville

Project No. (II):  
CS-275

Field Office: Myrtle Beach, S.C. Chief of Party: F. L. Gallen

Compilation Office: Tampa, Fla. Chief of Party: K. G. Crosby

Instructions dated (II III): 1/23/42; 7/15/42; 10/19/42; 10/23/42; 10/27/42  
Copy filed in Descriptive Report No. T- (VI)

Completed survey received in office: Apr. 3, 1943

Reported to Nautical Chart Section: Apr. 4, 1943

Reviewed: 7/28/43 Applied to chart No. Date:

Redrafting Completed: 2/1/44

Registered: 2/46 Published: 4/44

Compilation Scale: 1:20,000 Published Scale: 1:31680

Scale Factor (III): 1.00

Geographic Datum (III): N.A. 1927 Datum Plane (III): M.S.L.

Reference Station (III): McClellanville; 1932

Lat.: 33° 05' 42.937" (1322.7 m.) Long.: 79° 28' 33.692" (873.7)

Adjusted  
~~Unadjusted~~

State Plane Coordinates (VI):

X =

South America South Zone

Military Grid Zone (VI) B.

# PHOTOGRAPHS (III)

<u>Number</u>	<u>Date</u>	<u>Time</u>	<u>Scale</u>	<u>Stage of Tide</u>
8355	4/6/42	2:03 P.M.	1:20,000	+ 3.6
8356	"	2:05 P.M.	"	+ 3.6
8357	"	2:07 P.M.	"	+ 3.6

Tide from (III): Predicted Tides, McClellanville, Five Fatham Creek

Mean Range: 5.1 feet      Spring Range: 6.0 feet

Camera: (Kind or source) U. S. Coast & Geodetic Survey  
9 lens (8 $\frac{1}{4}$ " focal length)

Field Inspection by: D. G. Flipppo, D. L. Green,      date: Nov. and  
J. D. Stoddard      Dec. 1942

Field Edit by: Louis Levin      date: May, 1943

Date of Mean High-Water Line Location (III): April 6, 1942

Projection and Grids ruled by (III) Wash. Offc.      date:

" " " checked by: Wash. Offc.      date:

Control plotted by: See Remarks      date:

Control checked by: See Remarks      date:

Radial Plot by: (1934 compilation)      date:

Detailed by: F. H. Elrod, Sr. Photo. Aid      date: Jan. &  
Feb. 1943

Reviewed in compilation office by: A.L. Kidwell, Jr.      date: 2/22/43  
Topo. Engr.

Elevations on Field Edit Sheet  
checked by: L. Levin      date: 5-24-43

### STATISTICS (III)

Land Area (Sq. Statute Miles): 57 sq. st. miles (approx.)

Shoreline (More than 200 meters to opposite shore): 42.09 st. mi.  
(approx.)

Shoreline (Less than 200 meters to opposite shore): 84.18 st. mi.  
(approx.)

Number of Recoverable Topographic Stations established: --

Number of Temporary Hydrographic Stations located by radial  
plot: --

Leveling (to control contours) - miles: 14

Roman numerals indicate whether the item is to be entered  
by, (II) Field Party, (III) Compilation Party, or, (VI) the  
Washington Office.

When entering names of personnel on this record give the  
surname and initials (not initials only).

#### Remarks:

This sheet is made up from previous compilations from air photographs.  
Areas and shoreline have been measured on these compilations and sub-  
mitted to the Washington office.

## General Procedure in the Production of Topographic Quadrangles for the War Department

This quadrangle, together with similar adjoining maps produced under Project C.S. 275, was prepared by the Coast and Geodetic Survey for the War Department under "General Specifications for War Department Mapping Program" issued about December 1941, in which is incorporated the "Standard of Accuracy for a National Map Production Program" issued by the Bureau of the Budget under date of June 10, 1941.

The general procedure in the production of this and the adjoining quadrangles was:

### PREPARATION OF BASE MAPS

Assembly into quadrangle base sheets by photographic means of previously produced planimetric maps of the area. These maps were compiled by this Bureau from aerial photographs taken in 1934 and were published in 1935 on the scale of 1:10,000. Lithographic prints of the quadrangle base sheets on cloth-mounted paper were furnished to the field parties and similar prints in red ink on celluloid sheets were furnished to the compilation office.

### FIELD SURVEYS

Aerial photography with the Coast and Geodetic Survey nine-lens camera, with airplane and flight crew furnished by the U. S. Coast Guard. The photographs were taken to the scale of 1:20,000.

Ground inspection of the photographs for identification of control points, and classification and clarification of planimetric details on the photographs. The field parties were permitted to make field inspection notes either on the photographs or on the planimetric base sheet.

Contouring by planetable, directly on the photographs or on the planimetric base sheet at the option of the field party. The contouring for this quadrangle was done <sup>in part</sup> on the planimetric base sheet and ~~also~~ on the photographs.

Supplementary vertical control was established by means of an extensive subordinate level net, furnishing unmarked elevations at road intersections, driveways, and numerous other points identifiable on the photographs.

#### COMPILATION OF MANUSCRIPT

Revision of the planimetric base map from the new photographs and addition of contours and corrections obtained by the field parties. A radial plot was made for this work, using the red-line print as a base.

#### FIELD EDIT

Comparison of a copy of the corrected manuscript with the ground. This included inspection for completeness and accuracy as well as the location by planetable methods of additional details, checking of nautical and aeronautical aids to navigation, etc.

Accuracy Tests - Application of systematic horizontal and vertical accuracy tests to check the maps for conformity with the specifications. These tests consisted of comparison of the map position and elevation of selected random points with the true position and elevation as independently determined by standard survey methods.

#### PROCESSING IN THE WASHINGTON OFFICE

Review - Examination of the manuscript for accuracy and completeness of compilation and compliance with specifications, correcting where necessary; addition of military and state grids and other special features; and verification of the general adequacy of the manuscript as a basis for the production of a finished map.

Drafting and Reproduction - Preparation of smooth color separation drawings on 1:20,000 scale on metal-mounted "blue-line" copies of the manuscript. From these drawings, negatives and printing plates were prepared for reproduction of the finished map on the scale of 1:31,680 or 1:25,000.

DESCRIPTIVE REPORT TO ACCOMPANY  
McCLELLANVILLE

QUADRANGLE NO. 9

DEFENSE MAPPING PROJECT CS- 275  
Wm. D. Patterson, Chief of Party

*Joint Season field work*

Instructions for this project were dated January 23, 1942.

SURVEY METHODS:

Plane table and stadia traverse were used to locate all detail added to the sheet. A line of magnetic declination was placed on the sheet by orienting the sheet on a long, straight stretch of road and the declinator was used to orient the sheet on traverse and set-ups for locating detail. On traverses the general practice was to set the table at alternate turning points. All traverses closed with a horizontal error of less than 10 meters and where well defined detail had been located the error was distributed by the graphic method.

CONTROL:

Plane table positions were located from identifiable planimetric detail appearing on the sheet and a check obtained where the identification was doubtful. Control was not taken from detail which was obscured by foliage and might be inaccurately shown. No detail added to the sheet was located from positions of a less degree of accuracy than the classification of the points located.

Vertical control was taken from third order level circuits run over roads in this quadrangle.

REVISION WORK:

All road revisions on this quadrangle are shown. In most cases the actual road course has been changed, the original road being apparent and overgrown with brush. Two main changes of this type are shown on the Dupree Road, one where the road makes a right angle curve near the northeast corner of the sheet and the other where a private road joins the Dupree Road in a National Forest area. Other road changes were shown because of their actual misplacement on the sheet. In each of these cases the road was well covered by overhead tree foliage. Two main changes of this type are the Society Road where it joins State Highway No. 179 at the west edge of McClellanville, and the road junction in the southwest corner of McClellanville. Minor road changes, as well as additional roads, are shown on the sheet.

Houses shown on the blue line print were checked for location by inspection and a small check-mark placed on those not deleted. Additional houses have been located as appear on the sheet.

ACCURACY OF WORK:

With the exception of the road discrepancies mentioned above, and which were rectified, the detail shown on the blue line print appears to be within the limits of accuracy listed in the instructions. All detail added to the sheet is believed to be within the allowable limits of error and no further work on the completed portion of this quadrangle is recommended.

JUNCTION WITH ADJACENT SHEETS:

Satisfactory junctions were made with all abounding quadrangles.

SHORELINE:

A field examination was made of the coast line and the necessary change, made by plane table stadia traverse, is shown on the quadrangle sheet.

LANDMARKS:

There are no additional landmarks on this quad.

GEOGRAPHIC NAMES:

A list of geographic names in this area is covered in a special report. The local road names outside the McClellanville city limits are penciled on this sheet. All road names shown are from signs.

MARSH AREAS:

All marsh area shown on the blue line print is wet tidal marsh. The wet weather swamp areas are shown enclosed by the blue dashed line. The limits of these areas were found to be very indefinite but it is believed that those shown will be most nearly correct. They are called "wet weather swamps" because they dry out during the summer but have all of the appearance of a swamp during wet weather.

PHOTOGRAPHS:

No air photographs of this area were available.



BOUNDARIES: Francis Marion National Forest.

Shown on this quadrangle are the boundary lines enclosing one complete parcel and part of another parcel of National Forest area. These boundaries were shown by locating in the field two corners of each parcel and then tracing in the boundary lines by means of bearings (turned from true meridian) and distances. Two sheets are included in this report showing the bearings and distances of the sides of these parcels.

In 1936 President Roosevelt proclaimed the boundary line of the Francis Marion National Forest to include an area nearly twice the size of its present limits. The Forest Service has since then been buying up parcels of land similar to those shown on this quad. It is the goal of the Forest Service to buy up all these parcels to fill in the proclaimed area. It is believed by the Forest Service office in this area that that goal will never be reached. The proclamation of this boundary will be found in the Federal Register, The National Archives of the United States, Volume I, Number 88, July 15, 1936.

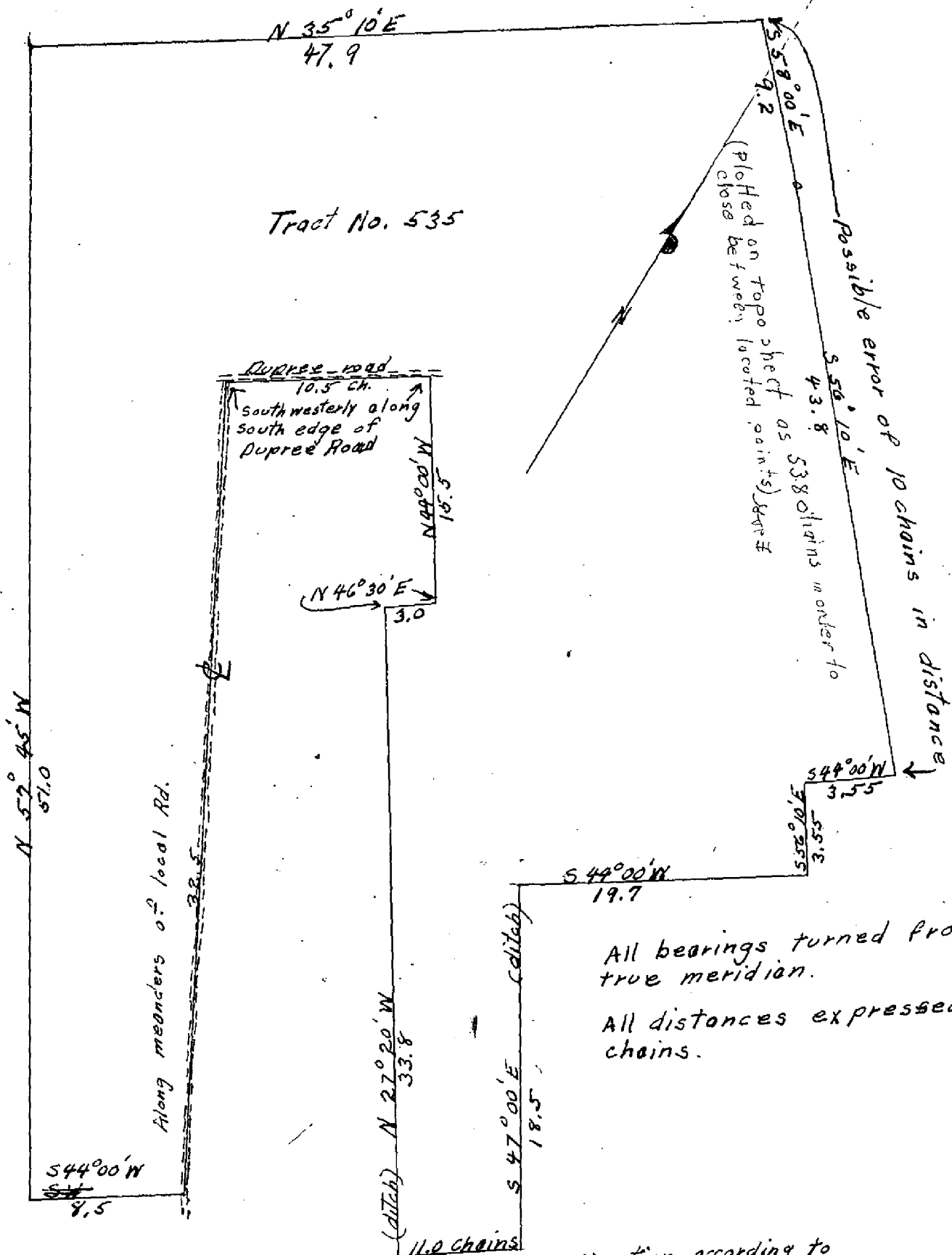
All forest information was obtained from the office of Forest Ranger, L. O. Barrett, U. S. Forest Service, Witherbee, South Carolina.

All available information concerning the boundary line of the Cape Romain Migratory Bird Refuge was obtained from Mr. A. H. Dupree, address Cape Romain Migratory Bird Refuge, McClellanville, South Carolina, and the boundary of the Bird Refuge was plotted on Quadrangles 8, 9 and 10 by reducing a traverse shown on a scale of 1:15,840 and by information personally supplied by Mr. Dupree. The traverse showing the outline of the bird refuge was run in 1933 before the Intra Coastal Canal was completed and since then the boundary has been changed in places to agree with the bank of the canal but the information is not shown on the maps which are uncorrected since 1933. It is believed that the boundary as shown on Quadrangles 8, 9, and 10 is the nearest that the line can be shown without extensive field work.

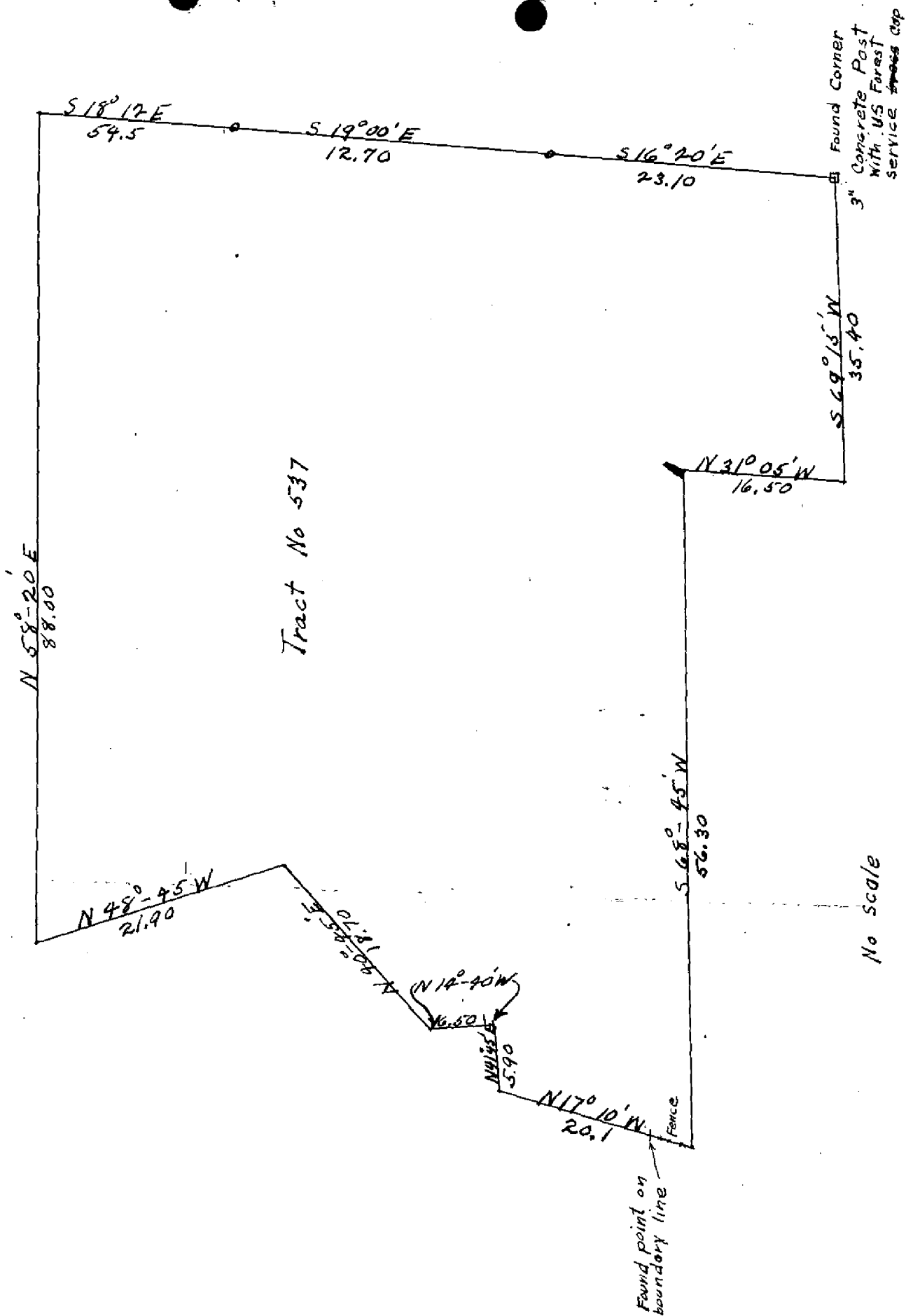
The boundary was set by presidential proclamation giving the bearings turned from a true meridian and the distances. The boundary line follows the edge of the marsh in places and in other places it follows the edge of the canal or waterway and is taken as the mean tide line, the difference between high tide and low tide being 5.2 feet. Where the edge of the marsh is bounded by dry land as shown in a few places on Quadrangle 10, the boundary is taken to be the edge of the marsh.

Surveyed By Forest Service in 1936

Quod 9



Quad 9





The maps of the traverse from which the boundary was transferred have been returned to Mr. Dupree. Information concerning this boundary may be obtained from the Fish and Wild Life Service, Department of the Interior, Washington, D. C. Mr. Arthur A. Rieman, if still employed by this department, would be likely to produce the most information on this boundary line.

INTRACOASTAL CANAL:

The boundary lines shown bounding the Intracoastal Canal show the R/W boundary and the limits of the spoil area. These markings are merely limits and should not be taken to mean that creeks shown on this area have been blocked except those noted. The limits were taken from a 1:5000 scale plan of the United States Engineer Office and transferred directly to this sheet.

The Cape Romain Migratory Bird Refuge boundary was plotted from information taken from a plat in possession of Mr. Dupree at the Refuge headquarters in McClellanville.

BRIDGES:

All bridges are shown by the bridge symbol. The approximate load capacity for all bridges is 6 to 10 tons.

BEACONS AND LIGHTS:

All beacons and lights were inspected and any discrepancies corrected.

This report submitted by

Glen B. Woolley  
Glen B. Woolley,  
Senior Engineering Aid,  
U. S. C. & G. S.

Approved and forwarded:

Wm. D. Patterson  
Wm. D. Patterson,  
Lieut. Comdr. U. S. C. & G. S.  
Defense Mapping Field Party No. 1

*This report covers field work on the planimetric base during first field season. Work was discontinued prior to completion of this quadrangle. See following field report of J. T. Gallen.*



FIELD INSPECTION REPORT  
QUADRANGLE T-8236  
PROJECT CS-275

F. L. GALLEN, CHIEF OF PARTY

1. The area covered by this survey varies in elevation from approximately 30 feet on State Highway Number 179 to sea level along the marshes. A series of ridges across the northwest corner of the Quadrangle separates the swamps and low ground to the northwest from the marshes on the southeast. The swamps and low areas, drainage, the woodlands, and the roads are similar to those described in the report for Quadrangle T-8237.

The area in this Quadrangle is fairly well populated and there are numerous small isolated farms as described in T-8237.

The town of McClellanville, S. C., population 502, is located near the central part of the Quadrangle.

2. For the work done this season, refer to the report for Quadrangle T-8238. For the survey made in the spring of 1942, refer to the report submitted at that time.

3. Please refer to the reports for Quadrangles T-8237 and T-8238.

The additions made in the spring of 1942 to the detailing in and around McClellanville were checked on the map assembly and against the photographs. The detail as shown on the map assembly by the topographer last year was found to be correct.

4 to 6 incl. - The same as 2 above.

7 to 13 incl. - Please refer to the report submitted in the spring of 1942.

14 to 16 incl. - The same as 2 above.

17. Refer to the report for Quadrangle T-8237.

18. The same as 2 above.

19. The junction with Quadrangle T-8232 on the north was partly on photographs which overlap the Quadrangles. The junctions along the old map assemblies were found to be in error on a few minor points. They were checked in the field and corrected.

The junction with Quadrangle T-8235 was checked and found correct.

The junction with Quadrangle T-8237 was discussed in the report for that Quadrangle.

This Quadrangle is bounded on the south by the Atlantic Ocean.

All field work has been completed including a field edit of those parts of the area covered by the planimetric maps, except as noted in the above descriptive report. Field edit of the entire quadrangle should be accomplished on the final copy of the compilation. This field edit should include that part of the area covered by the old planimetric maps and should be accomplished after these maps have been corrected from the data submitted on the field inspection photographs.

This report is not intended to cancel the report submitted in the spring of 1942 except where proper notations have been made.

Respectfully submitted,

*D. G. Flippo*

D. G. Flippo,  
Engineering Aid.

Approved and Forwarded:

*F. L. Gallen*

F. L. Gallen,  
Chief of Party.

- 1 -  
*Compilation* DESCRIPTIVE REPORT  
TO ACCOMPANY  
SHEET NO. T-8236

CONTROL

The control used for detailing Sheet T-8236 was furnished by Radial Plot and detail from the 1934 compilation by the U. S. Coast & Geodetic Survey. This detail was checked in the field, and was reported to be within the limits of accuracy required for mapping this project. All stations could be held in the radial plot.

RADIAL PLOT

A discussion of the radial plot which included this sheet was made a part of the Descriptive Report for Sheet T-8229.

DETAILING

Photographs from which Sheet T-8236 was detailed were very clear and of fairly good scale. Satisfactory junctions were made with Sheet T-8232 on the north, sheet T-8237 on the west, and Sheet T-8235 on the east. The Atlantic Ocean is the southern boundary of the sheet. Houses added to Sheet T-8236 were taken from the Field Edit of the 1934 compilation. Corrections on the southern part of the sheet were made by holding to detail of the 1934 compilation. The shoreline was detailed as shown on the photographs. It agreed with shoreline drawn by field inspector except at Key Inlet, where there is a disagreement of approximately 45 meters.

AIDS TO NAVIGATION

Aids to navigation and their geographic positions on Sheet T-8236 are shown on Form 567 which is a part of the report filed by Lieut. Comdr. William D. Patterson, Chief of Field Party in the area covered by this sheet.

HYDROGRAPHIC CONTROL

Hydrographic control is the same as appears on the 1934 compilations which make up sheet T-8236.

COMPARISON WITH EXISTING TOPOGRAPHIC QUADRANGLES

There are no existing topographic maps of this area for comparison with sheet T-8236.

COMPARISON WITH NAUTICAL CHARTS

Sheet T-8236 was compared with U. S. Coast & Geodetic Survey Nautical Chart No. 1238 (published in May 1938 on a scale of 1:80,000) and found to be in general agreement except for the southwest end of Raccoon Key where a difference of approximately 300 meters in the shoreline was noted.

GEOGRAPHIC NAMES

Geographic Names for sheet T-8236 were investigated in March 1942 and the data was forwarded to Washington in April, 1942; however, the geographic name "Moss Swamp" and names of National Forest and Wildlife refuges were inked on the sheet.

Respectfully submitted,

*Frank H. Elrod*

Frank H. Elrod,  
Sr. Photogrammetric Aid

Forwarded by:

*Kenneth G. Crosby*  
Kenneth G. Crosby,  
Chief of Party....



FIELD EDIT REPORT  
T-8236

16. About a half mile East of the town of McClellanville numerous dwellings had been deleted by the field inspection party. It is the opinion of the field edit party, that although these dwellings are small and of a shabby appearance, they are sturdily constructed and are nowhere near the end of their useful life. These dwellings have been circled in brown ink on photo #8355.
46. The field edit was done by visual inspection in the field, making all additions and deletions on the map manuscript except in the area stated above. All the detail was then transferred to the smooth copy while inking.

The following color scheme was used:

<u>Features</u>	<u>Colors</u>
Additions, bench marks, wye level elevations and crosses	Black
Deletions	Green
Drainage features	Blue
Contours	Brown
Civil boundaries	Violet

47. The position and amount of detail on this map manuscript is believed to be complete and adequate .
48. Horizontal accuracy tests were run in Quads. T-8232, T-8227 and T-8238 for Project C.S. 275

Submitted by,  
*Louis Levin 4/17/66*  
Louis Levin  
Photogrammetric Aid

Approved and forwarded:

*F. L. Gallen*  
F. L. Gallen,  
Chief of Party

## ROAD CLASSIFICATION FOR MAPS OF ALL SCALES

CLASS	LABEL	STRUCTURE	LOADING
1	Dependable hard-surface heavy duty road.	Concrete, asphaltic concrete bituminous Macadam, H-15 type structures.	Will bear heaviest loads with little maintenance.
2	Secondary, hard-surface all-weather road.	Surface-treated, oiled gravel, waterbound Macadam, structures generally lighter than H-15 but sturdy.	Will bear fairly heavy military loads in all weather if maintained.
3	Loose-surface graded, dry-weather road.	Gravel or stone surface, stable material, selected sand-clay, etc. Drained and graded.	Will bear light military loads in good weather.
4	Unimproved road.	Graded and drained earth, with very light structure.	Generally unsuitable for military loads.
4U	Truck road	Woods roads, farm roads, etc. over which a standard gage vehicle can be driven.	
5	Trail	(Horse trails, foot trails, etc.)	

Roads with more than two (2) lanes are indicated by note along road, e. g. 3 LANE. Change in lanes shown by tick at point of change. Main roads have two lanes unless otherwise marked.

Private roads are designated by the letter P after the road classification.

---

### WOODS CONCEALMENT CLASSIFICATION

Class A: Trees over 10' high and thick enough to hide troops.  
 Class B: Brush thick enough to hide troops but dense enough to impede progress.  
 Class C: Scattered brush thick enough to hide troops but not thick enough to impede progress.

---

SYMBOLS AND CODES

<u>Tree</u>	
D	Deciduous
E	Evergreen
Cy	Cypress

SYMBOLS AND CODES

Z	Trees 10 feet or more in height, and thick enough thick in foliage to conceal troops and vehicles.
Y	Brush and undergrowth thick enough to hide foot troops and conceal troops lying down.
X	Scattered trees not thick enough to conceal troops.
W	Scattered brush not thick enough to conceal troops.

SYMBOLS AND CODES

HQ	Higher ground - usually appears in light tone on photograph; either wooded or cultivated area; may be scrub trees or brush. (usually not symbolized on photographs.)
LC	Low areas - generally appears dark on photo graph; becomes swampy during rainy season; often covered with dense growth of brush.
OV	Swamp - ground covered with water or soggy most of the time; lower in elevation than LC; wooded and/ or brush.
K	Water marshes

NOTE: The above areas are not outlined but sufficient notes  
are made on each photograph so that the variation in tone  
can be correctly interpreted in the office.

**FIELD INSTRUCTIONS**  
**PROJECT 21-205**

**ABBREVIATIONS**

B - Barn  
Bldg - Building  
Bh Ho - Boat House  
Ch - Church (give name)  
Ct Ho - Court House (give name)  
Po O - Post Office (give name)  
Sch - School (give name)  
Hos - Hospital (give name)  
RR Sta - Railroad Station  
Sto - Country store or  
gas station  
P Sta - Power Station

**BOUNDARIES**

BOY - Boundary  
F B - Fire Break  
Hdg - Hedge  
Park - Park  
Cem - Cemetery  
Co - County

**LANDMARKS**

FT - Fire Tower (give name)  
TT - Transmission Tower  
RT - Radio Tower or mast  
Air En - Airway Beacon  
En - Non-lighted aid to  
navigation  
Lt - Lighted aid to  
navigation  
Tk - Low tank  
Tk elev - Tank elevated on  
structure  
Stk - Stack

**GENERAL**

X - delete; except where it  
pertains to elevations.  
Use only the abbrev. listed  
on this page. Do not make  
up abbreviations.

**WATER**

MWL - Mean high water; fast land  
LWL - Low waterline  
SL - Marsh shore-line  
M - Marsh  
Mw - Marsh grass in water  
Dk - Dock  
Pier - Pier  
Se T - Sea Tall  
Skhd - Bulkhead  
Jet - Jetty  
Dol - Dolphin  
File - File  
S - Sand  
Mud - Mud  
Rk - Rock or rocky  
Sty - Stony  
Cons - Concrete  
Wo - Wood  
Blf - Bluff  
Dune - Dune

**STREAMS AND PONDS**

D - Largest ditches only  
DK - Small ditch (delete)  
IS - Intermittent stream  
PD - Probable drainage  
Cr - Creek  
Ca - Canal  
CV - Culvert  
Lov - Loves  
Dam - Dam  
P - Pond  
IP - Intermittent pond

**VEGETATION**

Gr - Grass  
Sw - Swamp  
Cy Sw - Cypress Swamp





T-8236

No. 1

Remarks.

Decisions

1		330793
2		"
3		"
4		"
5		"
6		"
7		"
8		"
9		"
10		" U.S.G.B.
11		"
12		"
13		"
14		"
15		331793
16		"
17		331794
18		"
19		330794
20		"
21	Follow application on name sheet	" U.S.G.B.
22	" " " "	" "
23		"
24		"
25		"
26		"
27		"

# GEOGRAPHIC NAMES

Survey No. T-8236

McClellanville quadrangle

No. 1 Name on Survey

	A	B	C	D	E	F	G	H	K	
	On Chart No.	On previous survey No.	On U. S. quadrangle Maps	From local information	On local Maps	P. O. Guide or Map	Rand McNally Atlas	U. S. Light List		
Romain River ✓	✓									1
Mill Island ✓	✓									2
Lighthouse Island ✓	✓									3
S Creek ✓	✓									4
Slack Reach ✓	✓									5
Devils Den Creek ✓	✓									6
Horsehead Creek ✓	✓									7
Mill Den Creek ✓	✓									8
Deepwater Creek ✓	✓									9
Congaree Boat Creek ✓	✓									10
Casino Creek ✓	✓									11
Mill Creek ✓	✓									12
Needles Eye Creek ✓	✓									13
Ramhorn Creek ✓	✓									14
Sall Creek ✓	✓									15
Ormand Hall Creek ✓	✓									16
The Beach ✓	✓									17
River Road ✓	✓									18
Moore's Corner ✓	✓									19
McClellanville ✓	✓									20
Jeremy Creek ✓	✓									21
Town Creek ✓	✓									22
Island Cut ✓	✓									23
Mathews Creek ✓	✓									24
Mathews Cut ✓	✓									25
Clubhouse Creek ✓	✓									26
Jeremy Island ✓	✓									27

T-8236

No. 2

Remarks.

Decisions

1		330793 U.S.G.B.
2		"
3		"
4		"
5		"
6		"
7		"
8		"
9		"
10		" U.S.G.B.
11		"
12		" U.S.G.B.
13		"
14		330795 U.S.G.B.
15		"
16		330794
17		"
18		"
19		"
20		"
21		"
22		"
23		"
24		330795
25		
26		
27		



# GEOGRAPHIC NAMES

Survey No. T-8236

No. 2

GEOGRAPHIC NAMES											
Survey No. T-8236											
No. 2											
Name on Survey		On Chart No.	On previous survey No.	On U. S. quadrangle Maps	From local information	On local Maps	P. O. Guide or Map	Rand McNally Atlas	U. S. Light List		
A	B	C	D	E	F	G	H	K			
DuPre Creek ✓	✓									1	
Skrine Creek ✓	✓									2	
Joe and Ben Creek ✓	✓									3	
Oyster Bay ✓	✓									4	
Muddy Bay ✓	✓									5	
Horsehead Island ✓	✓									6	
Nellie Creek ✓	✓									7	
<del>Big</del> Papas Creek ✓	✓									8	
Little Papas Creek ✓	✓									9	
Santee Path Creek ✓	✓									10	
Five Fathom Creek ✓	✓									11	
Sett Creek ✓	✓									12	
Little Sett Creek ✓	✓									13	
Bull River ✓	✓									14	
Long Creek ✓	✓									15	
Key Inlet ✓	✓									16	
Key Bay ✓	✓									17	
Key Creek ✓	✓									18	
Raccoon Creek ✓	✓									19	
Raccoon Key ✓	✓									20	
Bay Creek ✓	✓									21	
Sandy Point Beach ✓	✓									22	
Clark Creek ✓	✓									23	
Palmetto Flats ✓	✓									24	
White Banks ✓	✓									25	
Sandy Point										26	
ATLANTIC OCEAN										27	

M 234

T-8236

No. 3

Remarks

Decisions

1		
2		330793
3		Road Maps
4		"
5		
6		
7		
8		
9		
10		
11		
12		
13		
14		
15		
16		
17		
18		
19		
20		
21		
22		
23		
24		
25		
26		
27		
M 234		

# GEOGRAPHIC NAMES

Survey No. T-8236

No. 3

Name on Survey

	On Chart No.	On previous survey No.	On U. S. quadrangle Maps	From local information	On local Maps	P. O. Guide or Map	Rand McNally Atlas	U. S. Light List	
A	B	C	D	E	F	G	H	K	
Charleston County ✓	✓								1
Cape Romain Migratory Bird Refuge									2
U.S. Highway 701 ✓ (also 17 on this quadrangle)									3
State Highway 179 ✓ (from McClenaville to northwestward)									4
									5
									6
									7
									8
									9
									10
									11
									12
									13
									14
									15
									16
									17
									18
									19
									20
									21
									22
									23
									24
									25
									26
									27

## RECORDS

Between January, 1942 and July, 1944, this Bureau completed 323 quadrangles. These maps have been published, or are in the process of being published on scales of 1:31,680 or 1:25,000. This series of quadrangles includes a land area of approximately 15,000 square miles. Incident to this work, a considerable volume of survey records and data has accumulated which will be filed for future reference. This material is filed as follows:

### Registered and Filed in the Vault

Cloth-mounted copy of the published quadrangle.

published quadrangle at 1:20,000 scale

Black and white cloth-mounted copy of the map manuscript. This copy is filed to preserve original survey detail shown on the manuscript at 1:20,000 scale which may not have been shown on the published sheet. For political boundaries, woodland, marsh, and swamp limits, refer to the published quadrangle for the finally adopted positions. outlines.

Descriptive Report.

Division.

Filed in the Photogrammetric Section--Surveys Branch

Field inspection photographs.

Contoured photographs (on which planetable contouring work was performed.)

Field edit sheet.

Descriptions of recoverable topographic stations (Form 524), filed in Reviewing Unit Section.

Supplementary traverse and level records.

Field notes, computations, lists of positions, and tabulations of results of horizontal and vertical accuracy tests.

Reproduction proof.

Correction sheet (copy of quadrangle showing in red changes to be made when next printed.)

Check lists of work performed on each sheet in the Washington Office during review, drafting, edit, and reproduction.

Original celluloid manuscript.

Copies of specifications and all instructions  
to field parties and field offices.

Filed in Reproduction Branch

Glass negatives of the color separation drawings.

Filed in the Library

~~Special report on field work by Commander K. T.  
Adams, 1944.~~

Special report on office work by B. G. Jones, 1944.

Season's report on field work by Commander F. L.  
Gallen, 1944.

Season's report on field work by Commander R. L.  
Schoppe, 1944.

Delivered to the Army Map Service in accordance  
with the contract

Film negatives and film positives of the color  
separation drawings.

All color separation drawings.

~~Original celluloid manuscript.~~

A correction sheet consisting of a copy of the  
first edition of the quadrangle with notes in red  
indicating changes desirable at the next printing.

## DIVISION OF CHARTS

### SURVEYS BRANCH

#### REVIEW OF AIR PHOTOGRAPHIC SURVEY T- 8236

#### McCLELLANVILLE QUADRANGLE

This quadrangle manuscript has been examined for completeness, accuracy, and conformity with the specifications. It is adequate for smooth drafting, reproduction and publication. Revisions found to be necessary in this office are discussed on the next page.

#### Horizontal and Vertical Accuracy

The nearest horizontal accuracy test was run in quadrangle T-8232.

The nearest vertical accuracy test was run in quadrangle T-8233.

#### Previous Surveys

This manuscript has been compared with the following previous topographic surveys of this Bureau and other agencies. This map is satisfactory to supersede the previous surveys over the common area.

T-772	1:20,000	1857
T-1347	1:20,000	1874
T-1400a	1:20,000	1875
T-3841	1:20,000	1921
T-4160	1:20,000	1925
T-5382	1:10,000	1934-35 *
T-5383		
T-5386		
T-5387		
T-5388		

#### Comparison with Nautical Charts Nos.

The manuscript has not been applied to the charts at the date of this review. The following comments are pertinent to the compilation and correction of nautical charts:

The details of T-8236 are complete and adequate for chart correction.

\* A number of Horizontal Control Stations of U.S. Engineers along the intra coastal waterway are shown on the planimetric maps but have not been carried forward on T-8236. They are not superseded by T-8236 1399

The following revisions of the map manuscript were found to be necessary and were accomplished as a part of this review:

Only changes of a minor nature were necessary during the review of this map manuscript.

Reviewed July 10, 1943 By W. W. Bellings  
under direction of D. H. Benson (per W.M.)

Inspected by B. G. Jones *B.G. Jones 2/46*

Examined and approved:

K. T. Adams  
Chief, ~~Surveys Branch~~ -  
Division of Photogrammetry

Chief, Topography Section

Robert W. Knox  
Chief, ~~Div. of Charts~~  
Nautical Chart Branch

Raymond B. Egan  
Chief, Div. of Coastal  
Surveys



## NAUTICAL CHARTS BRANCH

SURVEY NO. T-8236

### Record of Application to Charts

[illegible]

M-2168-1

A basic hydrographic or topographic survey supersedes all information of like nature on the uncorrected chart. Give reasons for deviations, if any, from recommendations made under "Comparison with Charts" in the Review.