

8299

Diag'd. on Diag. Ch. No. 78-3 & 1227

Form 504

U. S. COAST AND GEODETIC SURVEY

DEPARTMENT OF COMMERCE

DESCRIPTIVE REPORT

Type of Survey Air Photographic Topo.

Field No. CS-289-A Office No. T-8299

LOCALITY

State Virginia

General locality Princess Anne County

Locality Virginia Beach Quad

194 2-'44

CHIEF OF PARTY

F.L. Gallen

LIBRARY & ARCHIVES

DATE June 2, 1949

8-1870-1 (1)

8299

DATA RECORD

Form T-1

T- 8299

Quadrangle (II): $7\frac{1}{2}$ minute

Project No. (II): CS-289 A

Field Office: Suffolk, Va.

Chief of Party: F. L. Gallen

Compilation Office: Baltimore, Md.

Chief of Party: Fred. L. Peacock

Instructions dated (II III):

Mar. 13, July 10, Oct. 20, Nov. 25, 1943

Jan. 18, 1944

Copy filed in ^{Division of} ~~Descriptive~~~~Report No. T-~~~~(VI)~~
Photogrammetry Office Files

Completed survey received in office: 9 May, 1944

Reported to Nautical Chart Section:

Reviewed: 24 May 1944 Applied to chart No.

Date:

Redrafting Completed: 5 June 1944

Registered: 13 Dec. 1948

Published: May 1945

Compilation Scale: 1:20,000

Published Scale: 1/31680

Scale Factor (III): None

Geographic Datum (III): N. A. 1927

Datum Plane (III): Mean Sea Level

Reference Station (III): CROATAN, 1934, r.1939

Lat.: $36^{\circ} 47' 04.483''$ (138.2m) Long.: $75^{\circ} 58' 06.876''$ (170.5m) Adjusted
~~Unadjusted~~

State Plane Coordinates (VI): Virginia — South Zone

X = ~~2,741,264.80~~
2,747,993.74Y = ~~174,228.59~~
160,135.40Military Grid Zone (VI),
ZONE A

PHOTOGRAPHS (III)

<u>Number</u>	<u>Date</u>	<u>Time (E.W.T.)</u>	<u>Scale</u>	<u>Stage of Tide</u>
Nine Lens				
12553 to 12557 Inc.	11/28/42	11:15 A.M. to 11:33 A.M.	1:20,000	2.7 ft. above M.L.W.
12558 to 12562 Inc.	11/28/42	11:15 A.M. to 11:39 A.M.	1:20,000	2.8 ft. above M.L.W.

Tide from (III): Predicted tables, Reference station Hampton Roads, Va. with corrections for Virginia Beach, Va.

Mean Range: 3.0'

Spring Range: 3.6'

Camera: (Kind or source) U. S. Coast & Geodetic Survey nine lens camera (focal length 8 $\frac{1}{4}$ ")

Field Inspection by: Walter W. Doeringsfeld

date: Dec. 1943

Contouring by: Henry M. Eldridge and Glen B. Woolley

Dec. 1943

Field Edit by: *EL. Maxwell*

date: *1944*

Date of Mean High-Water Line Location (III): Same as date of photographs

Projection and Grids ruled by (III): P.J.H. - J.T.B.

date: 2/21/44

" " " checked by: B.R.C. - L.V.E. 3rd

date: 2/22/44

Control plotted by: J. Edward Deal, Jr.

date: 2/25/44

Control checked by: Joseph Steinberg

date: 2/25/44

Radial Plot by: Joseph Steinberg & J. Edward Deal, Jr.

date: 3/3 to 3/8/44

Detailed by: Margaret F. Walworth

date: 3/13 to 5/8/44

Reviewed in compilation office by: Henry P. Eichert

date: 5/2 to 5/8/44

Elevations on Field Edit Sheet

checked by: *R.B.C.*

date:

STATISTICS (III)

Land Area (Sq. Statute Miles); 15

Shoreline (More than 200 meters to opposite shore); 14 Statute Miles

Shoreline (Less than 200 meters to opposite shore); $4\frac{1}{2}$ Statute Miles
(centerline of streams only)

Number of Recoverable Topographic Stations established; 16
(9 of which are bench marks)

Number of Temporary Hydrographic Stations located by radial plot: None

Leveling (to control contours) - miles;

Roman numerals indicate whether the item is to be entered by,

(II) Field Party, (III) Compilation Party, or, (VI) the Washington Office.

When entering names of personnel on this record give the surname
and initials (not initials only).

Remarks;

FIELD INSPECTION REPORT
QUADRANGLE T-8299
Project CS-289
F.L. Gallen, Chief of Party

1. The area covered by this quadrangle is very flat and low in elevation, except for the sand dunes that are found along the shore line. The highest sand dune found in the quadrangle has an elevation of about 41 feet.

Large swampy areas are found in the southern part of the quadrangle. In the northern part swampy areas are found only along the streams. The streams and ponds immediately south of the town of Virginia Beach are controlled by the sand along the shore line. The elevation is usually held by Mean High Water, because the inlet (Rudy Inlet) is filled with sand at high tide and remains closed during low tide except when heavy rains occur. The southern part of the quadrangle drains in a southerly direction into North Bay. The central part is drained in an easterly direction into the Atlantic Ocean, and the north portion is drained in a north westerly direction into Linkhorn Bay, and eventually empties into the Chesapeake Bay at Lynnhaven Inlet.

Rudice

Virginia Beach, population 2600 (1940 census) is the only town in the quadrangle. The southern part of the quadrangle is sparsely populated.

Camp Pendleton, an Army Military Reservation lies about the center of the quadrangle. There are two Coast Guard Stations in the quadrangle, one at Virginia Beach and the other at Dam Neck. There are also two Navy Reservations, Dam Neck Naval Aviation Base and Dam Neck Navy Base.

Not delineated

There are many good roads in the vicinity of Virginia Beach, whereas the extreme southern part of the quadrangle is inaccessible by car.

2. The field inspection for this area is believed to be complete except, for the classification of bridges. This will be done by the field edit party. A sheet is attached to this report showing the color scheme for buildings. An attempt has been made to give the number of all state and U.S. roads. The number is either given in the proper symbol or written along the road.
3. In general the interpretation of the photographs is the same as those of similar areas which were mapped by this party. The darker tones are usually evergreen woods, or deciduous woods with heavy underbrush. The gum and cypress along marsh areas usually appear as a light gray color.
4. The horizontal control is the subject of a separate report.

5. Supplemental levels were run over many of the State and County roads to furnish additional control for the plane-table party. Elevations were left on identifiable points on the photographs in areas where no identifiable points existed, scales were used to identify the elevation, and these points were later located by the plane-table party.

Sufficient ties were made to permanent bench marks to control these lines, and if the error of closure was less than 0.30 of a foot, no adjustment of the elevations were made. If the closure was greater than 0.30 of a foot, and less than 1.0 foot, a straight adjustment was applied to the elevations. If the error was 1.0 foot or greater, the lines were re-run.

6. All contouring was done directly on the photographs using the regular equipment. The stereoscope has been used very little in this area, except where sand dunes were found.

All field inspection including the location of streams was done by a separate party before the contouring was started. Notations were made of any features that were in doubt, and they were checked in the field by the plane-table party. This method proved to be more economical since there is little contouring to be done in this area, and the Field Inspection was done by a two man party. The vertical closures of the plane-table party were held to about the same accuracy as the supplemental levels. A small error in elevation would cause much displacement in most of the area. No trouble was experienced in horizontal closures, since there were identifiable points near most of the set ups, and very little scale factor was found on any of the photographs.

7. The mean high water line has been indicated on the photographs.
8. The Low Water line has been identified on the photographs where it could be determined by this party.
9. Harves and shore line structures to be shown on the map have been identified on the photographs.
10. Details offshore from the High Water line have been indicated on the photographs where they could be seen from the shore line.
11. A list of the Landmarks to be deleted from the charts will be submitted at a later date. Aids to navigation have been partially completed by this party and the remainder will be completed by the field edit party.
12. Hydrographic and Topographic stations were established along the shore where needed so as to have control about every statute mile.

13. There are no landing fields in the quadrangle. The aeronautical aids are of a secret nature and have not been shown.
14. All roads are classified according to instructions from the Army War College, dated November 11, 1942.
15. The dimensions and load limit on the bridges have been shown on the photographs, but they have not been classified.
16. All buildings and structures have been indicated in contrasting colors on the photographs. The following color scheme was used for quadrangles in the area of Radial Plot No. 1 and in quadrangle T-8205 and east of the Southern Branch of the Elizabeth River in quadrangle T-8298, in the area of Radial Plot No. 2
- Red..... dwellings
Green..... barns
Blue..... business buildings
Black..... public buildings
Orange..... military buildings
18. Geographic names is the subject of a separate report.
19. The quadrangle joins a survey by the War Department on the south. There are no 20-foot contours along this junction. The junction to the west with quadrangle T-8298 and to the north with an area east of quadrangle T-8301 are on overlapping photographs. The junctions have been checked in the field and should be found correct. The quadrangle joins the Atlantic Ocean on the east.

Submitted by

Glen B. Woolley
Glen B. Woolley
Senior Engineering Aid

Approved and Forwarded

F. L. Gallen

F. L. Gallen
Chief of Party

26 CONTROL:

The Field Inspection Party recovered and identified, on the nine lens field photographs, the following five horizontal control stations. Those falling within the limits of this Map Manuscript are:

CROATAN, 1934, r.1939 ✓
CAVALIER HOTEL CUPOLA, 1929 ✓
SANDBRIDGE, 1934 (Confidential)
VIRGINIA BEACH WATER TANK, 1909, r.1921, r.1922, r.1931 ✓

One falling just outside the detail limits of this Map Manuscript is:

GUN, 1934, r.1939

In addition, one horizontal control station, namely, VIRGINIA BEACH, EAST RADIO MAST, RED LIGHT ON TOP, 1932, was pricked by office inspection on the nine lens office photographs at the Compilation Office, and used as control.

All of the above horizontal control stations were used for the establishment of photograph centers, secondary, and detail points.

27 RADIAL PLOT:

The Radial Plot for this Map Manuscript is part of the Main Radial Plot No. 1 of Project C.S. 289, for which a descriptive report was submitted to the Washington Office on March 9, 1944. *It was attached to the descriptive report for T-8297*

28 DETAILING:

The field inspection data furnished for this Map Manuscript was satisfactory. The Mean High-Water Line shown by the field inspection data was transferred, with the aid of the stereoscope, to the nine lens office photographs and then detailed on the Map Manuscript. Drainage and the limits of marsh areas were also verified by stereoscopic examination of the office photographs.

The Compilation Office was furnished a town map of Virginia Beach from which the boundary limits were obtained. Plans of Camp Pendleton and the Anti-Aircraft Training and Test Center at Dam Neck were also furnished by the Field Inspection Party.

*also on map:
1. Va. Sch. West Radio Mast
2. Dam Neck Hills G.B. Sta. Cupola*

*T-8297
98
99
4301
02*

28 DETAILING: (Continued)

In the areas mentioned above all detail was shown on the Map Manuscript. Nevertheless, according to a letter from Headquarters Fifth Naval District, dated March 30, 1944, to the Lt. Commander F. L. Gallen, a copy of which has been furnished this Compilation Office, and a duplicate copy of which is attached to this descriptive report, mention is made of a restricted area at Dam Neck. The letter requested that no internal details in the "A. F. G. U., Dam Neck," shown on drawing No. 4274, be shown on our Map Manuscripts. Drawing No. 4274 has not been furnished this Compilation Office. On the blueprint of Naval Anti-Aircraft Training Center at Dam Neck, which may include the restricted area referred to, was a note that all detail be shown. An appropriate note on the discrepancy overlay designates this area as a possible restricted area.

check

*Neither name
nor detail shown
on Quad.*

*Detail shown on
Quad., but no name*

29 SUPPLEMENTAL DATA:

The following previous topographic surveys covering portions of the area of Survey No. 8299 have been made by the U. S. Coast & Geodetic Survey:

Survey No.	Date	Scale
T-753	1859	1:20,000
T-2699	1905	1:20,000
T-3658	1916	1:30,000
T-4139	1925	1:20,000

The following plans were furnished the Compilation Office by the Field Inspection Party:

— Camp Pendleton (Camp site) - Scale 1" equals 400'
— Camp Pendleton (Camp area) - Scale 1" equals 400'
— Dam Neck, Va., Anti-Aircraft Training and Test Center,
 (Outlying adjunct of Norfolk Naval Operating Base)
 - Scale 1" equals 200'
— Town Map of Virginia Beach, Va. - Scale 1" equals 200'
— Map of Virginia Beach and vicinity.

30 MEAN HIGH-WATER LINE:

The stage of tide of all the photographs used in detailing

30 MEAN HIGH-WATER LINE: (Continued)

the Map Manuscript was computed and found to be near Mean High-Water. The High Water-Line was interpreted by stereoscopic examination with the aid of data furnished on the field inspection photographs.

31 LOW-WATER AND SHOAL LINES:

No data was furnished by the Field Inspection Party regarding approximate Low-Water or shoal lines within the area of this Map Manuscript. An approximate Low-Water Line has been shown along the coast from examination of the office photographs.

32 DETAILS OFFSHORE FROM THE HIGH-WATER LINE:

There were no details offshore from the High-Water Line, either indicated on the field inspection photographs, or visible on the nine lens office photographs.

33 WHARVES AND SHORELINE STRUCTURES:

There were no wharves or shoreline structures either indicated on the field inspection photographs or visible on the nine lens office photographs.

34 LANDMARKS AND AIDS TO NAVIGATION:

See Paragraph 11 of the field inspection report for Survey No. T-8299.

35 HYDROGRAPHIC CONTROL:

Seven recoverable topographic stations established by radial intersection, are suitable for use as partial hydrographic control in any future hydrographic survey. In addition, there are 5 bench marks which may have limited value as hydrographic control. The other 4 bench marks are too far inland to be of any use for hydrographic control.

Form 524 is being submitted for each of the 16 recoverable topographic stations.

FLAG TOWER
LOOK PINE
SIG POLE
QUE
S-284
T-284
G-289
H-289
J-289
M-289
0565 "10"
0565. 50 PA
Sealock "16"

36 LANDING FIELDS AND AERONAUTICAL AIDS:

There are no landing fields within the limits of this Map Manuscript. No recommendations have been made to the Compilation Office for any aeronautical aids within the limits of this Map Manuscript.

37 DISCREPANCY OVERLAY:

A discrepancy overlay has been prepared to accompany this Map Manuscript. On it are notes calling the attention of the Field Edit Party to items that should be classified or investigated. A set of general notes is included to aid in the interpretation of the symbols shown on the Map Manuscript and the discrepancy overlay.

38 GEOGRAPHIC NAMES:

The results of a geographic name investigation have been furnished the Compilation Office on a copy of the U. S. Geological Survey, Cape Henry, Va. Quadrangle. All undisputed names have been shown on the Map Manuscript. A list of undisputed, disputed, and recommended names is attached to this report.

39 HORIZONTAL ACCURACY:

The horizontal accuracy of this Map Manuscript is believed to be within the limits prescribed for well-defined and less well-defined points for War Mapping Projects.

40 RECOMMENDATIONS FOR FUTURE SURVEYS:

The planimetry, as presented on this Map Manuscript is believed to be complete. It is subject to corrections, additions, or deletions by the Field Edit Party.

41 JUNCTIONS:

Complete and satisfactory junctions have been made with the two following surveys:

To the North with Map Manuscript for Survey No. T-8300
To the West with Map Manuscript for Survey No. T-8298

To the South there is no contemporary survey available to the Compilation Office for junction purposes.

To the East is the Atlantic Ocean.

42 REMARKS:

The description of the area of this Map Manuscript as given in the field inspection report, is adequate.

44 COMPARISON WITH EXISTING TOPOGRAPHIC QUADRANGLES:

Because of scale difference only a visual comparison could conveniently be made with the U. S. Geological Survey, Cape Henry, Va. Quadrangle. Common planimetric features seemed to be in good agreement.

45 COMPARISON WITH NAUTICAL CHARTS:

Comparison was made with Chart 1222, published May 1937, and reissued August 1938, which included part of the area of this Map Manuscript; and Chart 1227, published October 1937 and reissued October 1938, and March 6, 1944. Both charts are of scale 1:80,000. The scale of these charts is too small for a detailed comparison, and only a visual comparison could conveniently be made. It was found that common topographic features were in fair agreement. Evidently a number of man made changes have been made since the publication of these charts.

Respectfully submitted:
May 8, 1944

Margaret F. Walworth
Margaret F. Walworth
Asst. Photogrammetric Aid

Map Manuscript, Discrepancy
Overlay and Descriptive Report
Reviewed by:

Henry P. Eichert
Henry P. Eichert
Jr. Photogrammetric Engineer

Compilation of Map Manuscript
Supervised by:

Joseph Steinberg
Joseph Steinberg
Asst. Photogrammetric Engineer

and

J. Edward Deal, Jr.
J. Edward Deal, Jr.
Asst. Photogrammetric Engineer

Approved and Forwarded:
May 9, 1944

Fred. L. Peacock
Fred. L. Peacock
Commander C. & G. S.
Officer-in-Charge
Baltimore Photogrammetric Office.

FIELD EDIT REPORT
TO ACCOMPANY
QUADRANGLE T-8299
PROJECT CS-289 (South) A-1
F. L. Gallen Chief of Party

5. VERTICAL CONTROL: The designation and elevation of each bench mark appearing on the map manuscript has been checked and verified.
7. MEAN HIGH WATER LINE: A discrepancy was noted by the compilation office in the mean high water line, as shown by the field inspection, at the southern end of Virginia Beach. The field edit party investigated the high water line at this place and corrected it on an ozalid print of the map manuscript.
14. ROAD CLASSIFICATION: Unclassified roads appearing on the map manuscript except those within the boundaries of Virginia Beach, have been classified by the field edit party in accordance with the instructions for road classification.
15. BRIDGES: All bridges in the area have been classified in accordance with instructions for bridge classification.
16. BUILDINGS AND STRUCTURES: All buildings, except dwellings, added by the field edit party have been classified.
17. BOUNDARY MONUMENTS AND LINES: The boundary between Lynnhaven and Seaboard voting districts was marked on an ozalid print of the map manuscript by the field edit party. The town boundary of Virginia Beach and the boundaries of the several military installations shown on the map manuscript were verified by the field edit party.
28. MILITARY DETAIL: The discrepancy overlay directed the attention of the field edit party towards a possible restricted area in the vicinity of Dam Neck. An investigation was made by the field edit party, with the following results: The area shown on the map manuscript as the Dam Neck Anti-Aircraft Training and Test Center actually includes another installation, the Dam Neck Aviation Free Gunnery Unit. The area of the Free Gunnery Unit is the restricted area in question since it is included in the list of installations of which no internal detail is to be shown on our map (re: a letter from Headquarters Fifth Naval District to Lieut. Comdr. F. L. Gallen, a copy of which is attached to the descriptive report for this quadrangle). The boundary between the A.F.G.U. and the Anti-Aircraft Training and Test Center has been marked on an ozalid print of the map manuscript by the field edit party. A blue print of drawing No. 4274 (re: the letter referred to above and item #28, page 5, of the descriptive report for the quadrangle) is being furnished the compilation office. Not on pub Prod.

The commanding officer of Dam Neck Anti-Aircraft Training and Test Center, does not want the name "Dam Neck Anti-Aircraft Training and Test Center, shown on the final map, but the detail as shown on the map manuscript is permissible. OK

Murray

46. METHODS: The field edit was accomplished by visual inspection in the field. All notes were made on an ozalid print of the map manuscript and were transferred to a duplicate ozalid print. The various field edit notes have been inked on the ozalid print, using the following color scheme:

Deletions Green
Additions, classifications,
Names and notes Black
Water culture Blue
Political Subdivisions Violet

47. ADEQUACY OF COMPILATION: The detail, as compiled on this sheet, was complete and adequate with few additions, classifications or deletions necessary.

48. ACCURACY TESTS: No vertical accuracy test was made in this area due to the small land area. Vertical accuracy test were run in quadrangle T-8295, to the west, and quadrangle T-8301, to the north.

No horizontal accuracy test was run in this quadrangle.

Submitted by:

E. L. Maxwell per F. L. G.
E. L. Maxwell
Jr. H. and G. Engr.
U.S.C. & G.S.

Approved and forwarded by:

F. L. Gallen

F. L. Gallen
Chief of Party

GEOGRAPHIC NAMES

Undisputed

✓Atlantic Ocean	✓Lake Wesley
✓Atwoodtown	✓Linkhorn Park
✓Camp Pendleton	✓Lovett's Marsh
Casino Station	✓Malbon Swamp
✓Courthouse Road	✓Norfolk Southern (Electric)
✓Dam Neck	✓Owl Creek
✓Dam Neck Corner	✓Princess Anne Club Golf Links
✓Dam Neck Mills	✓Prosperity Road
✓Dam Neck Mills Coast Guard Station	✓Rainey Point
✓Dam Neck Road	✓Robinson Island
✓Dyer Road	✓Seaside Road
✓James Swamp	✓Seatack
✓Lake Christine	✓Virginia Beach
✓Lake Holly	✓Virginia Beach Coast Guard Station
✓Lakeview	

GEOGRAPHIC NAMES

Recommended

✓Black Gut
✓Fresh Pond
✓Lake Rudee
✓Lake Station
✓Linkhorn Bay
✓Rudee Inlet
Salt Pond
✓Seatack Road
✓Scopus Marsh
✓The Casino

Disputed

Rainey Pond
Lake Redwing
Lake Rudy
Rifle Range Junction
Little Neck Creek
Rudy Inlet
Lake Tecomsen
Seatrack Road
James Swamp
New Casino

GEOGRAPHIC NAMES

Survey No. T-8299

1	Name on Survey	<div>On Chart No.</div> <div>On previous survey No.</div> <div>On U. S. quadrangle Maps</div> <div>From local information</div> <div>On local Maps</div> <div>P. O. Guide or Map</div> <div>Rand McNally Atlas</div> <div>U. S. Light List</div>									
		A	B	C	D	E	F	G	H	K	
✓	Atlantic Ocean	✓									1
✓	Virginia	✓									2
✓	Princess Anne County	✓									3
✓	Lynnhaven District	✓									4
✓	Seaboard District	✓									5
✓	Norfolk Southern R.R.	✓									6
✓	U.S. No. 58, 60										7
✓	Va. No. 164										8
											9
✓	Robinson Island										10
✓	Black Gut										11
✓	Atwoodtown										12
✓	Seaside Road										13
✓	Scopus Marsh										14
✓	Salt Pond										15
✓	Rainey Point										16
✓	Dyer road										17
✓	Dam Neck										18
✓	Dam Neck Mills										19
✓	Dam Neck Mills C.G. Sta.										20
✓	Dam Neck Road										21
✓	Dam Neck Corner										22
✓	Malbon Swamp										23
✓	James Swamp										24
✓	Lovett Marsh										25
✓	Fresh Pond										26
✓	Prosperity Road										27

Remarks.

Decisions

1		
2		USGB
3		
4		
5		
6		Railway Guide
7		Road Maps
8		"
9		
10		367759
11		"
12		"
13		"
14		"
15		"
16		"
17		"
18		"
19		"
20		"
21		"
22		367760
23		367759
24		"
25		"
26		"
27		"

GEOGRAPHIC NAMES

Survey No. T-8299

2	Name on Survey	A	B	C	D	E	F	G	H	K		
✓	Courthouse Road	(same of it here)										1
✓	Camp Pendleton										2	
✓	Lake Christine										3	
✓	Lake Wesley										4	
✓	Lake Rudee										5	
✓	Rudee Inlet										6	
✓	Owl Creek										7	
✓	Lakeview										8	
✓	Lake Holly										9	
✓	Lake Station										10	
✓	Seatack										11	
✓	Seatack Road										12	
✓	Virginia Beach										13	
✓	Virginia Beach C.G. Sta.										14	
✓	The Casino										15	
✓	Casino Station										16	
✓	Linhorn Bay										17	
✓	Cavalier Club Golf Course	not enough in this sheet. Guid. to the left										18
✓	Bird Neck Point										19	
✓	Princess Anne Club Golf Links	11 11 11 11 11 11 11 11 11 11 11 11										20
✓	Linhorn Park										21	
											22	
											23	
											24	
											25	
											26	
											27	

Names underlined in red approved
by L. Heck on 6/1/44

M 236

Names underlined in red approved
by L. Heck on 6/1/44

T-8299

2
Decisions

Remarks

1		368760
2		368759
3		"
4		"
5	Pending with USGB	"
6	" " "	"
7		"
8		"
9		"
10		"
11		"
12		"
13		"
14		"
15		"
16		"
17	Pending with USGB: omit Little Neck Creek	368760
18		"
19		"
20		368759
21		"
22		
23		
24		
25		
26		
27		

POST-OFFICE ADDRESS: P. O. Box 627, Suffolk, Va.

TELEGRAPH ADDRESS:

EXPRESS ADDRESS:

DEPARTMENT OF COMMERCE
U. S. COAST AND GEODETIC SURVEY

May 12, 1944

Mr. B. G. Jones
U. S. Coast and Geodetic Survey
Washington, D. C.

Dear Jones:

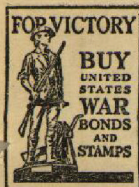
We recently forwarded the field edit sheets for quadrangles Nos. T-8299 and T-8301, Project CS-289 (South) to Washington and I believe we let some wrong road names slip by. All highways in the 600 series should be labeled County Roads instead of State Highways. In quadrangle No. T-8299 I believe that the roads were wrongly labeled on the field inspection photographs and were not changed by the field edit party.

*Numbers not
on pub. Quad.*

Our work is progressing nicely. All contouring should be finished next week and the shoreline inspection and recovery of horizontal and vertical control for Project 289*W is already well along.

Best regards,

G. R. Fish



(Copy)

HEADQUARTERS FIFTH NAVAL DISTRICT
Naval Operating Base
Norfolk 11, Virginia.

H1-18 Maps/JCP/vb

30 March 1944

Lt. Comdr. F. L. Gallen
U. S. Coast and Geodetic Survey
P. O. Box 627
Suffolk, Virginia

My dear Mr. Gallen:

In accordance with the recent visit of Captain Paul C. Witney, U.S.C.&G.S., and yourself to the Commandant, Naval Air Center, Hampton Roads, Virginia, there are enclosed herewith blueprints of the below listed plans of outlining activities:

PW B/P dwg No. 4243, Pungo Field
B/P PW dwg No. 4135, Fentress Field
B/P PW dwg No. 4090, Oceana Field
B/P Y&D dwg No. 223190, Oceana Field
B/P PW dwg No. 4182, Creeds Field
B/P PW dwg No. 4099, Monogram Field
B/P Y&D dwg No. 223152, Franklin Field
B/P Y&D dwg No. 223176, Franklin Field
B/P PW dwg No. 4274, A.F.G.U., Dam Neck

In accordance with the understanding arrived at some time ago when you called on the Assistant Commandant of the District in connection with the mapping work you are performing for the Army, no internal details of the respective stations are to be shown on the maps you are preparing.

Very truly yours,

F. R. Hewes
Captain (CEC), USN
By direction of the Commandant

CC
Comdt. NAC,HR

DIVISION OF CHARTS

SURVEYS BRANCH

REVIEW OF AIR PHOTOGRAPHIC SURVEY T-8299

VIRGINIA BEACH QUADRANGLE VIRGINIA

This quadrangle manuscript has been examined for completeness, accuracy, and conformity with the specifications. It is adequate for smooth drafting, reproduction and publication. Revisions found to be necessary in this office are discussed on the next page.

Horizontal and Vertical Accuracy No horizontal or vertical accuracy tests were run in this map area, but tests on the sheets to the west and the north (T-8298 and T-8300) proved to be well within the accuracy limits.

Previous Surveys

This manuscript has been compared with the following previous topographic surveys of this Bureau and other agencies. This map is satisfactory to supersede the previous surveys over the common area.

T-2699	1/20000	1905	
T-3685	1/30000	1916	
T-4139	1/20000	1925	
U.S.G.S. Q uad.	Cape Henry, Va.,	1/62500	1918

Comparison with Nautical Charts Nos.

The manuscript has not been applied to the charts at the date of this review. The following comments are pertinent to the compilation and correction of nautical charts:

See Compilation Report

The following revisions of the map manuscript were found to be necessary and were accomplished as a part of this review:

Notes from check list submitted at time of review. LTS

Reviewed _____ By Robert B. Collier per LTS.
under direction of D. H. Benson Robert B Collier, 24 May, 1944

Inspected by B. G. Jones

B.G. Jones

Examined and approved:

H. H. McMaster
Chief, ~~Survey~~ Branch
Nautical Chart

Chief, Div. of Charts

K.T. Adams
Chief, ~~Topography~~ Section
Division of Photogrammetry

W.M. Scaife
Chief, Div. of Coastal
Surveys

RECORDS

Between January, 1942 and July, 1944, this Bureau completed 323 quadrangles. These maps have been published, or are in the process of being published on scales of 1:31,680 or 1:25,000. This series of quadrangles includes a land area of approximately 15,000 square miles. Incident to this work, a considerable volume of survey records and data has accumulated which will be filed for future reference. This material is filed as follows:

Registered and Filed in the Vault.

Cloth-mounted copy of the published quadrangle.

Black and white cloth-mounted copy of the published quadrangle at 1:20,000 scale. This copy is filed to preserve original survey detail shown on the manuscript at 1:20,000 scale which may not have been shown on the published sheet. For woodland, refer to the published quadrangle for the finally adopted outlines.

Descriptive Report.

Filed in the Photogrammetric Division.

Field inspection photographs.

Contoured photographs (on which planetable contouring work was performed.)

Field edit sheet.

Descriptions of recoverable topographic stations (Form 524), filed in Review Section.

Supplementary traverse and level records.

Field notes, computations, lists of positions, and tabulations of results of horizontal and vertical accuracy tests.

Reproduction proof.

Correction sheet (copy of quadrangle showing in red changes to be made when next printed.)

Check lists of work performed on each sheet in the Washington Office during review, drafting, edit, and reproduction.

Copies of specifications and all instructions to field parties and field offices.

Filed in Reproduction Branch.

Glass negatives of the color separation drawings.

Filed in the Library.

Special report on office work by B. G. Jones, 1944.

Season's report on field work by Commander F. L. Gallen, 1944.

Season's report on field work by Commander R. L. Schoppe, 1944.

Delivered to the Army Map Service in accordance with the contract.

Film negatives and film positives of the color separation drawings.

All color separation drawings.

A correction sheet consisting of a copy of the first edition of the quadrangle with notes in red indicating changes desirable at the next printing.

NAUTICAL CHARTS BRANCH

SURVEY NO. T-8299 (1942-44)

Review 1944

Record of Application to Charts

[illegible]

M-2168-1

A basic hydrographic or topographic survey supersedes all information of like nature on the uncorrected chart. Give reasons for deviations, if any, from recommendations made under "Comparison with Charts" in the Review.