

8227

8227

Form 504	
U. S. COAST AND GEODETIC SURVEY	
DEPARTMENT OF COMMERCE	
DESCRIPTIVE REPORT	
KILSOCK BAY, S.C.	
N3315-W7922.5/7.5	
Type of Survey	Air Photo. Compilation
Field No.	Office No. T-8227
LOCALITY	
State	South Carolina
General locality	Georgetown County
Locality	Kilsock Bay
1943	
CHIEF OF PARTY	
Lieut. Comdr. F. L. Gallen	
Lieut. Comdr. K. G. Crosby	
LIBRARY & ARCHIVES	
DATE	February 8, 1946

## DATA RECORD

T- 8227

Quadrangle (II): Kilsock Bay, S.C.  
*N 3315-W 7122.5/7.5*

Project No. (II):  
 CS 285

Field Office: Georgetown, S. C.

Chief of Party: F. L. Gallen

Compilation Office: Tampa, Florida

Chief of Party: K. G. Crosby

Instructions dated (II III): 1/23/42, 7/15/42, 10/19/42, 10/23/42, 10/27/42, 2/6/43  
 Copy filed in Descriptive Report No. T- (IV):

Completed survey received in office: *May 1943*

Reported to Nautical Chart Section: *May 1943*

Reviewed: *9/4/31* Applied to chart No. date

Redrafting Completed: *Nov. 12, 1943*

Registered: *Dec. 1945*

Published: 1943

Compilation Scale: 1:20,000

Published Scale: 1:31680

Scale Factor (III): 1.00

Geographic Datum (III): N.A. 1927

Datum Plane (III): M.S.L.

Reference Station (III): Sampit, 1934

Lat.: 33° 21' 34.448 (1061.3 m.) Long.: 79° 28' 39.569 Adjusted:  
 (1023.1 m.) ~~Unadjusted:~~

State Plane Coordinates (IV): *South Carolina, South Zone*

*Not available coordinates for Datum Station*  
 X = *not computed* Y =

Military Grid Zone (VI): *B*

PHOTOGRAPHS (III)

<u>Number</u>	<u>Date</u>	<u>Time</u>	<u>Scale</u>	<u>Stage of Tide</u>
8350	April 6, 1942		1:20,000	Inshore sheet
8351			"	
8352			"	

Tide from (III): -

Mean Range: -

Spring Range: -

Camera: (Kind or source) USC & GS Nine lens ( $8\frac{1}{4}$ " focal length)

Field Inspection by: G. B. Woolley, L. Levin, M. W. Burr

date:

Jan. - Mar. 43

Field Edit by: *D. Flippo.*

date:

*July 1943*

Date of Mean High-Water Line location (III): --

Projection and Grids ruled by (III): C.H.R.

date:

12/16/42

" " " checked by: J.C.O'N.

date:

12/17/42

Control Plotted by:

Control Checked by:

date:

P.G.Gill, Photo.Aid

V.F.Simmons, Photo.Aid

12/21-22/42

Radial Plot by: Tampa Office Personnel

date:

12/28/42

Detailed by: M.M.Slavney, Prin.Photo.Aid

date:

Jan.-Apr. 1943

F.H.Elrod, Sr.Photo.Aid

Reviewed in compilation office by:

date:

J.H.S.Billmyer, Asst. Photo. Engr.

May 1943

Elevations on Field Edit Sheet checked by:

date:

*D. Flippo*

*July 1943*

STATISTICS. (III)

Land Area (Sq. Statue Miles): 60.59

Shoreline (More than 200 meters to opposite shore): None

Shoreline (Less than 200 meters to opposite shore): 21

Recoverable Topographic Stations established: 1

Temporary Hydrographic Stations located by radial plot: None

Leveling (to control contours) - miles: *44 mi*

Roman numeral indicate whether the item is to be entered by, (II) Field Party, (III) Compilation Party, or, (VI) the Washington Office.

When entering names of personnel on this record give the surname and initials (not initials only).

Remarks:

## General Procedure in the Production of Topographic Quadrangles for the War Department

This quadrangle, together with similar adjoining maps produced under Project C.S. 285, was prepared by the Coast and Geodetic Survey for the War Department under "General Specifications for War Department Mapping Program" issued about December 1941, in which is incorporated the "Standard of Accuracy for a National Map Production Program" issued by the Bureau of the Budget under date of June 10, 1941.

The general procedure in the production of this and the adjoining quadrangles was:

### FIELD SURVEYS

Aerial photography with the Coast and Geodetic Survey nine-lens camera, with airplane and flight crew furnished by the U. S. Coast Guard. The photographs were taken to the scale of 1:20,000.

Ground inspection of the photographs for identification of control points, and classification and clarification of planimetric details on the photographs.

Contouring by planetable directly on the photographs. Supplementary vertical control was established by means of an extensive subordinate level net, furnishing unmarked elevations at road intersections, drive-ways, and numerous other points identifiable on the photographs.

### COMPILATION OF MANUSCRIPT

Compilation on the map manuscripts by radial plot methods (celluloid hand templates) of all planimetry and contours. These manuscripts were drawn on the scale of 1:20,000 on celluloid sheets on which polyconic projections had been ruled with the Projection Ruling Machine in the Washington Office. Compilation was accomplished in the Baltimore Tampa Photogrammetric Office.

### FIELD EDIT

Comparison of a copy of the manuscript with the ground. This included inspection for completeness and accuracy as well as the location by planetable methods of additional details, checking of nautical and aeronautical aids to navigation, etc.

Accuracy Tests - Application of systematic horizontal and vertical accuracy tests to check the maps for conformity with the specifications. These tests consisted of comparison of the map position and elevation of selected random points with the true position and elevation as independently determined by standard survey methods.

#### PROCESSING IN THE WASHINGTON OFFICE

Review - Examination of the manuscript for accuracy and completeness of compilation and compliance with specifications, correcting where necessary; addition of military and state grids and other special features; and verification of the general adequacy of the manuscript as a basis for the production of a finished map.

Drafting and Reproduction - Preparation of smooth color separation drawings on 1:20,000 scale on metal-mounted "blue-line" copies of the manuscript. From these drawings, negatives and printing plates were prepared for reproduction of the finished map on the scale of 1:31,680 or 1:25,000.

FIELD INSPECTION REPORT  
QUADRANGLE T-8227  
PROJECT CS-285  
F. L. Gallen, Chief of Party

1. Approximately 50 percent of this Quadrangle is swamp. Big Kilsock Bay and Little Kilsock Bay occupy the central part of the Quadrangle. ("Bay" is a local term applied to the swamps). There is a distinct perimeter of higher land surrounding these two Bays with a sharp drop from the top down into the Bays. Part of this perimeter is a ridge approximately fifty feet in elevation that crosses the Quadrangle from the south central portion and runs northwest and north toward triangulation station SAMPIT. This ridge divides the drainage into two parts. The land north and east of the ridge drains into the Bays and from them into the Sampit River which crosses the northern part of the Quadrangle. The land south and west of this ridge drains into Cedar Creek which flows southeastward across the southwestern part of the Quadrangle and empties into the North Santee River. The higher ground north of the Bays separates them from the Sampit River. This ridge is crossed by the streams draining the Bays. The land in the northern part of the Quadrangle drains directly into the Sampit River. The creeks and river flow through swamps. It is necessary for the water in the Bays to reach a depth of approximately three feet before any run-off takes place. This information was obtained from local residents.

Most of the area covered by this Quadrangle is wooded. The woods are practically all evergreen except in the swamps where cypress and gum are found. There are a few isolated farms along the ridges and the extreme northwest part of the Quadrangle is more densely settled than other parts. The farms produce subsistence crops for the most part. A large part of the land is owned by the International Paper Company and the West Virginia Paper and Pulp Company. These Companies do considerable controlled logging on their land.

2. All field inspection was completed. It was impossible to penetrate the swampy areas due to the thick undergrowth except where logging roads have been cut. Stadia traverse and levels were run with the planetable along these roads. The field inspection was accomplished as the planetable survey was made.

3. The shading on the photographs was found to conform with the description of the area in the Director's Instructions of October 27, 1942. Numerous notes have been placed on the photographs so the compilers should experience little difficulty in interpreting the details.

4-5-6. Refer to the Report for Quadrangle T-8238.

7-8-9-10. Refer to the Report for Quadrangle T-8233.

11. There are no aids to navigation in this Quadrangle. One landmark, The Sampit Fire Tower, was located as an H & T Station.

12. No hydrographic control stations were established.

13. There are no landing fields or aeronautical aids in the Quadrangle.
14. The roads are all of sand clay top soil. They were classified according to standard instructions. A copy of the system used is attached to the Report for Quadrangle T-8238.
15. Refer to the Report for Quadrangle T-8233.
16. Refer to the Report for Quadrangle T-8238.
17. The political boundaries of Georgetown County will be added at the time of the field edit. Sampit Fire Tower and reservation is shown on the photograph. No other boundaries fall in this Quadrangle.
18. Refer to the Report for Quadrangle T-8238.
19. All the adjacent quadrangles join this one on overlapping photographs. The junctions between photographs were checked in the field and the junctions with the adjacent quadrangles should be satisfactory.

*Glen B. Woolley*  
Glen B. Woolley,  
Sr. Engineering Aid.

Approved and forwarded:

*F. L. Gallen*  
F. L. Gallen,  
Chief of Party.

DESCRIPTIVE REPORT  
TO ACCOMPANY  
SHEET NO. T-8227

CONTROL

The control used for detailing Sheet T-8227 was furnished by Main Radial Plot of December 28, 1942. One traverse station and one triangulation station, and geographic positions of features identified on the photos were used for control. These positions were determined by the U. S. Geological Survey. The geographic position of G-15, (U.S.C.S.) 1934, was not furnished. The position of this station on the survey sheet was determined by the main radial plot. One topographic station, Sampit Fire Tower, falls within the limits of this survey sheet.

MAIN RADIAL PLOT

A discussion of the main radial plot, which included this Sheet, was made a part of the Descriptive Report for Sheet T-8229.

DETAILING

Photographs from which Sheet T-8227 was detailed were not very clear. In wooded areas all streams could not be seen due to the density of trees. It is suggested that the location of Cedar Creek be investigated by the field party. P.D.U. streams are general over the entire sheet, their locations were taken from field photographs. Field inspection was not adequate and classification of vegetation was poor.

Satisfactory junctions were made with Sheet T-8222 on the north, Sheet T-8228 on the west, Sheet T-8226 on the east and Sheet T-8232 on the south. Field photograph No. 8366 is at present in the field. Portions of two contours and possibly several spot elevations which are on this photo are not shown. When the field photo is received a section will be traced, showing enough roads and vegetation lines to orient sketch, and the omitted contours and spot elevations. This tracing will be sent to the Washington Office.

COMPARISON WITH EXISTING TOPOGRAPHIC QUADRANGLES

There is no existing topographic maps of this area for comparison with Sheet T-8227.

GEOGRAPHIC NAMES

Geographic names for Sheet T-8227 were taken from General Highway and Transportation maps, Georgetown County, South Carolina. These maps were used by the field party for Geographic Name Sheets. 1: H.  
S. R. 34

Respectfully submitted,

*Milton M. Slavney*  
Milton M. Slavney, *1942*  
Prin. Engr. Draftsman

Forwarded by:

*Kenneth G. Crosby*  
Kenneth G. Crosby,  
Chief of Party...

**FIELD INSPECTION**  
**PROJECT CS-265**

**BUILDINGS**

B - Barn  
Bldg - Building  
Bo Ho - Boat House  
Ch - Church (give name)  
Ct Ho - Court House (give name)  
P.O - Post Office (give name)  
Sch - School (give name)  
Hos - Hospital (give name)  
RR Sta - Railroad Station  
Sto - Country store or  
gas station  
P Sta - Power Station

**BOUNDARIES**

BDY - Boundary  
F B - Fire Break  
HOG - Hedge  
Park - Park  
Cem - Cemetery  
Co - County

**LANDMARKS**

FT - Fire Tower (give name)  
TT - Transmission Tower  
RT - Radio Tower or mast  
Air En - Airway Beacon  
Da - Non-lighted aid to  
navigation  
Lt - Lighted aid to  
navigation  
Tk - Low tank  
Tk elev - Tank elevated on  
structure  
Stk - Stack

**GENERAL**

X - delete; except where it  
pertains to elevations.  
Use only the abbrev. listed  
on this page. Do not make  
up abbreviations.

**SHORE LINE**

HWL - Mean high water; fast land  
LWL - Low waterline  
LL - Marsh shore line  
M - Marsh  
MW - Marsh grass in water  
Dk - Dock  
Pier - Pier  
Se W - Sea Wall  
Bkhd - Bulkhead  
Jet - Jetty  
Dol - Dolphin  
Pile - Pile  
S - Sand  
Mud - Mud  
Rk - Rock or rocky  
Sty - Stony  
Cons - Concrete  
Wo - Wood  
Blf - Bluff  
Dune - Dune

**STREAMS AND PONDS**

D - Largest ditches only  
DK - Small ditch (delete)  
IS - Intermittent stream  
PD - Probable drainage  
Cr - Creek  
Ca - Canal  
Cv - Culvert  
Lev - Levee  
Dam - Dam  
P - Pond  
IP - Intermittent pond

**VEGETATION**

Gr - Grass  
Sw - Swamp  
Cy Sw - Cypress Swamp

## WOODS AND BRUSH

### TYPE

D	Deciduous
E	Evergreen
Cy	Cypress

## CONCEALMENT

Z	Trees 10 feet or more in height, and thick enough when in foliage to conceal troop and vehicles.
Y	Brush and undergrowth thick enough to impede foot troops and conceal troops lying down.
X	Scattered trees not thick enough to conceal troops.
W	Scattered brush not thick enough to conceal troops.

## PHYSICAL FEATURES

HC	Higher ground - usually appears in light tone on photograph; either wooded or cultivated area; may be scrub trees or brush. (usually not symbolized on photographs.)
LG	Low areas - generally appears dark on photograph; becomes swampy during rainy season; often covered with dense growth of brush.
SW	Swamp - ground covered with water or boggy most of the time; lower in elevation than LG; wooded and/or brush.
M	Salt marshes

NOTE: The above areas are not outlined but sufficient notes are made on each photograph so that the variation in tones can be correctly interpreted in the office.

## ROAD CLASSIFICATION FOR MAPS OF ALL SCALES

CLASS	LABEL	STRUCTURE	LOADING
1	Dependable hard-surface heavy duty road.	Concrete, asphaltic concrete bituminous Macadam, H-15 type structures.	Will bear heaviest loads with little maintenance.
2	Secondary, hard-surface all-weather road.	Surface-treated, oiled gravel, waterbound Macadam, structures generally lighter than H-15 but sturdy.	Will bear fairly heavy military loads in all weather if maintained.
3	Loose-surface graded, dry-weather road.	Gravel or stone surface, stable material, selected sand-clay, etc. Drained and graded.	Will bear light military loads in good weather.
4	Unimproved road.	Graded and drained earth, with very light structure.	Generally unsuitable for military loads.
4U	Truck road	Woods roads, farm roads, etc. over which a standard gage vehicle can be driven.	
5	Trail	(Horse trails, foot trails, etc.)	

Roads with more than two (2) lanes are indicated by note along road, e. g. 3 LANE. Change in lanes shown by tick at point of change. Main roads have two lanes unless otherwise marked.

Private roads are designated by the letter P after the road classification.

### **WOODS CONCEALMENT CLASSIFICATION**

~~Class A: Trees over 10' high and thick enough to hide troops.~~

~~Class B: Brush thick enough to hide troops but dense enough to impede progress.~~

~~Class C: Scattered brush thick enough to hide troops but not thick enough to impede progress.~~

# BRIDGE AND TUNNEL CLASSIFICATION

<u>First Symbol</u>	<u>One Lane</u>	<u>Unlimited</u>
Capacity	5 m.p.h.	
A	50 tons	25 tons
B	25 tons	18 tons
C	18 tons	15 tons
D	10 tons	7 tons
E	8 tons	4 tons
F	Light vehicles only	

## Second Symbol

Vertical Clearance	A - over 14 feet
	B - over 13 feet
	C - over 12 feet
	D - over 11 feet, etc.

## Third Symbol

Horizontal Clearance	A - over 18 feet
	B - over 17 feet
	C - over 16 feet
	D - over 15 feet, etc.

Fourth Symbol - Year of Classification.

FIELD EDIT REPORT  
T-8227  
PROJECT CS-285

46. The field edit was done by visual inspection, making all additions and deletions on the map manuscript, and transferring all the detail to a smooth copy while inking.

The following color scheme was used:

FEATURES	COLORS
Additions, bench marks, wye level elevations and crosses	RED
Deletions	GREEN
Drainage features	BLUE
Contours	BROWN
Civil Boundaries	VIOLET

47. The position and amount of detail on this map manuscript is believed to be complete and adequate.

48. A horizontal accuracy test was run in this quad.

Vertical accuracy tests are the subject of a special report for Project CS-285.

Submitted by

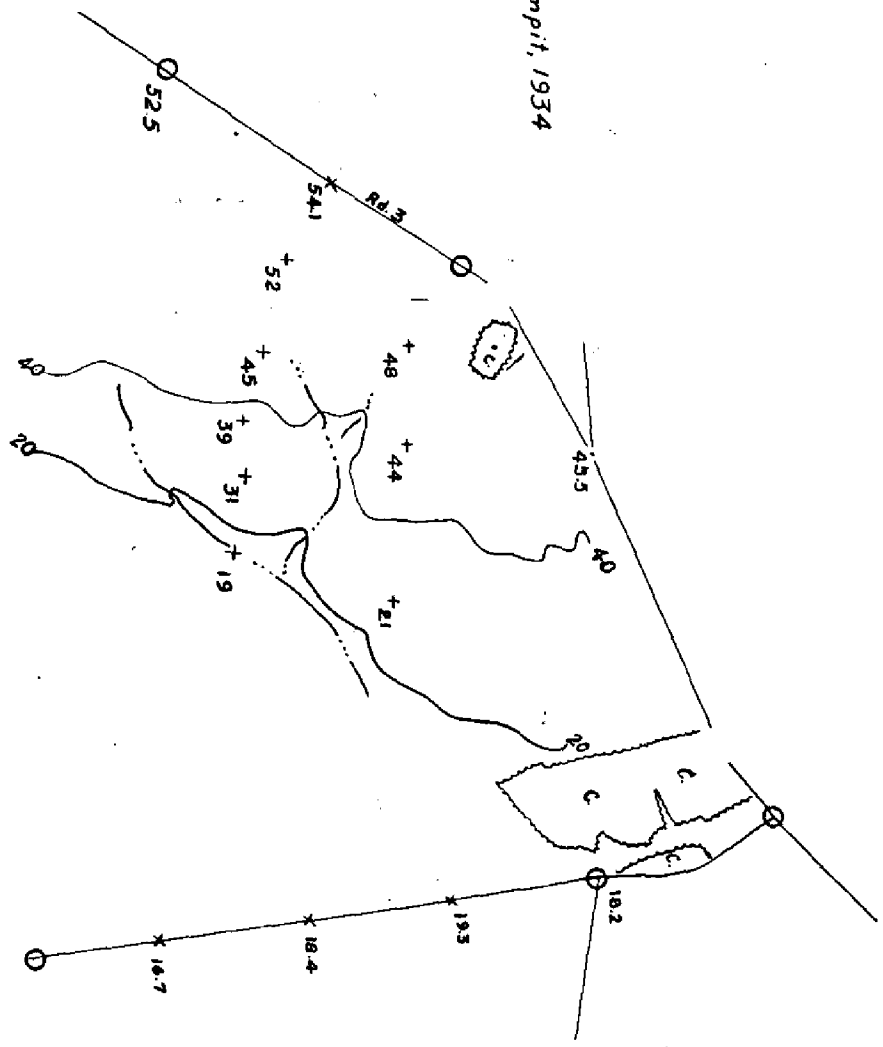
*Donald G. Flippo*  
Donald G. Flippo *per F.L.G.*  
Engineering Aid

Approved and Forwarded

*F. L. Gallen*  
F. L. Gallen  
Chief of Party

△ G-205, 1934  
(USGS)

△ Sampit, 1934



(note)  
TRACING OF CONTOURS AND SPOT ELEVATIONS FROM FIELD PHOTO NO. B366.

728  
KTR  
POST-OFFICE ADDRESS: 1101 E. Broadway  
Tampa, Florida

TELEGRAPH ADDRESS:

EXPRESS ADDRESS:

826

MAY 21 1943

DEPARTMENT OF COMMERCE  
U. S. COAST AND GEODETIC SURVEY

May 21, 1943

TO: The Director  
U. S. Coast & Geodetic Survey  
Washington, D. C.

FROM: Lieut. Comdr. Kenneth G. Crosby  
Air Photographic Party No. 1  
Tampa, Florida

SUBJECT: Project 285 - celluloid tracing

Attached is a celluloid tracing from a  
portion of field print No. 8366 showing contours and  
spot elevations that were omitted from Sheet T-8227,  
(Project 285), which has been sent in to the Washington  
Office. This omission is in the descriptive report for  
the sheet.

The field print has just been received  
in this office.

*Kenneth G. Crosby*  
Kenneth G. Crosby, *KGC*  
Chief of Party....



T-8227

T-8227

No. 1  
Decisions

Remarks

1		332792
2		332793
3	Pending with USGB	332794
4	" " "	"
5	New name, not in original names report	"
6		"
7		"
8		"
9		"
10		"
11		333794
12		332794
13		333794
14		"
15		"
16		"
17		"
18		"
19		"
20		"
21		333793
22		333794
23		"
24		
25	Those numbers fall on sheet to the north -	Road Maps
26	" " " " " " " "	"
27		

# GEOGRAPHIC NAMES

Survey No. T-8227

"Kilsock Bay" quadrangle

No. 1 Name on Survey

	On Chart No.	On previous survey No.	On U. S. quadrangle Maps	From local information	On local Maps	P. O. Guide or Map	Rand McNally Atlas	U. S. Light List	
A,	B,	C,	D	E	F	G	H	K	
✓ <u>Sampit River</u>	✓								1
✓ <u>Big Kilsock Bay</u>	✓								2
✓ <u>Wadmacon River</u>	✓								3
✓ <u>Wadmacon Island</u>	✓								4
<u>Jack Hill</u>	✓								5
✓ <u>Britton Neck Road</u>	✓								6
✓ <u>Cedar Creek</u>	✓								7
✓ <u>Kilsock Island</u>	✓								8
✓ <u>Little Kilsock Bay</u>	✓								9
✓ <u>Kilsock Road</u>	✓								10
✓ <u>Foster Corner</u>	✓								11
✓ <u>Britton Neck</u>	✓								12
✓ <u>Ward Bridge</u>	✓								13
✓ <u>New Road</u>	✓								14
✓ <u>Lodge Hall</u>	✓								15
✓ <u>New Hope</u>	✓								16
✓ <u>Sampit</u>	✓								17
✓ <u>Sampit Bridge</u>	✓								18
✓ <u>Boggy Swamp</u>	✓								19
✓ <u>Cumberland</u>	✓								20
✓ <u>Pennyroyal Road</u>	✓								21
✓ <u>Spring Gully</u>	✓								22
✓ <u>Sampit Forest Fire Lookout Tower</u>	✓								23
									24
✓ <u>U.S. Highway 17, 701</u>									25
✓ " " 521									26
									27

No. 2

Remarks

Decisions

1		Road Maps
2		
3		
4		
5		
6		
7		
8		
9		
10		
11		
12		
13		
14		
15		
16		
17		
18		
19		
20		
21		
22		
23		
24		
25		
26		
27		

# GEOGRAPHIC NAMES

Survey No.

T-8227

No. 2

Name on Survey

	A	B	C	D	E	F	G	H	K	
✓ State Highway No. 528										1
✓ State Highway No. 813										2
✓ Georgetown County			✓							3
✓ Santee Twp 1			✓							4
✓ Andrews (Pt.) (Black River) Twp 4			✓							5
✓ Sampit (Pt.) Gurdin Twp 2			✓							6
										7
										8
										9
										10
										11
										12
										13
										14
										15
										16
										17
										18
										19
										20
										21
										22
										23
										24
										25
										26
										27

11/1/43

## RECORDS

Between January, 1942 and July, 1944, this Bureau completed 323 quadrangles. These maps have been published, or are in the process of being published on scales of 1:31,680 or 1:25,000. This series of quadrangles includes a land area of approximately 15,000 square miles. Incident to this work, a considerable volume of survey records and data has accumulated which will be filed for future reference. This material is filed as follows:

### Registered and Filed in the Vault

Cloth-mounted copy of the published quadrangle.  
published quadrangle at 1:20,000 scale  
Black and white cloth-mounted copy of the map manuscript. This copy is filed to preserve original survey detail shown on the manuscript at 1:20,000 scale which may not have been shown on the published sheet. For ~~political boundaries~~, woodland, ~~marsh, and swamp limits~~, refer to the published quadrangle for the finally adopted ~~positions~~. outlines.

Descriptive Report.

Division.

Filed in the Photogrammetric Section--Surveys Branch

Field inspection photographs.

Contoured photographs (on which planetable contouring work was performed.)

Field edit sheet.

Descriptions of recoverable topographic stations (Form 524), filed in ~~Reviewing Unit~~.Section.

Supplementary traverse and level records.

Field notes, computations, lists of positions, and tabulations of results of horizontal and vertical accuracy tests.

Reproduction proof.

Correction sheet (copy of quadrangle showing in red changes to be made when next printed.)

Check lists of work performed on each sheet in the Washington Office during review, drafting, edit, and reproduction.

Original celluloid manuscript.

Copies of specifications and all instructions  
to field parties and field offices.

Filed in Reproduction Branch

Glass negatives of the color separation drawings.

Filed in the Library

~~Special report on field work by Commander K. T.  
Adams, 1944.~~

Special report on office work by B. G. Jones, 1944.

Season's report on field work by Commander F. L.  
Gallen, 1944.

Season's report on field work by Commander R. L.  
Schoppe, 1944.

Delivered to the Army Map Service in accordance  
with the contract

Film negatives and film positives of the color  
separation drawings.

All color separation drawings.

~~Original celluloid manuscript.~~

A correction sheet consisting of a copy of the  
first edition of the quadrangle with notes in red  
indicating changes desirable at the next printing.

## DIVISION OF CHARTS

### SURVEYS BRANCH

#### REVIEW OF AIR PHOTOGRAPHIC SURVEY T- 8227

#### KILSOCK BAY QUADRANGLE

This quadrangle manuscript has been examined for completeness, accuracy, and conformity with the specifications. It is adequate for smooth drafting, reproduction and publication. Revisions found to be necessary in this office are discussed on the next page.

#### Horizontal and Vertical Accuracy

Both a horizontal and a vertical accuracy test were run in this quadrangle and both conform with the national standard map accuracy requirements. For a report on these tests see the files in the Division of Photogrammetry under Project 285.

#### Previous Surveys

This manuscript has been compared with the following previous topographic surveys of this Bureau and other agencies. This map is satisfactory to supersede the previous surveys over the common area.

There are no previous topographic surveys in this area.

#### Comparison with Nautical Charts Nos. 787

The manuscript has not been applied to the charts at the date of this review. The following comments are pertinent to the compilation and correction of nautical charts:

The details of T-8227 are complete and adequate for chart correction.

The following revisions of the map manuscript were found to be necessary and were accomplished as a part of this review:

Only changes of a minor nature were necessary during the review of this map manuscript.

Reviewed <sup>26</sup> August 43 By Jack Rihn  
under direction of D. H. Benson

Inspected by B. G. Jones B.G. Jones 12/17/45

Examined and approved:

K.T. Adams  
Chief, Surveys Branch  
Division of Photogrammetry

Chief, Topography Section

Robert W. Long  
Chief, Div. of Charts  
Nautical Chart Branch

Raymond P. Egan  
Chief, Div. of Coastal  
Surveys